



INSPIRED BY LIFE.
BUILD YOUR FUTURE WITH US



SIKKIM MANIPAL UNIVERSITY
PROSPECTUS
2026

ADVISORY

The results for all the programs offered by **Sri Mata Jyoti's Institute of Management Studies (SMJIMS)** can be accessed only on the basis of the 100% in the respective qualifying examination. SMJIMS has no upper or middleman for admission. There is no donation or capitation fee of any kind.

For all authorized information, please visit

smu.edu.in



SMU Ranking - 2025

THE WEEK

- Asian and Multidisciplinary University Rank 3 (2024)
- East Asia High Education University (Govt./ Non Govt.) Rank 8 (2024)
- Top-Qual Private & Oversea Mult-Disciplinary University Rank 10 (2024)



- Top University (Govt.) (Global Ranking)



- Top Private University in India Rank 2 (2024)



- Overall Ranking (100+) (Global Ranking)



- World University Rankings 2022 (100+) (Global Ranking)

5. Test Listed Entry Programs

- [Computer Science](#)
- [Computer Science & Information Technology](#)
- [Full Stack Software Engineering](#)
- [Frontend Software Engineering](#)
- [Full Stack Software Engineering \(6 Months Learning\)](#)
- [Data Science](#)
- [Full Stack Software Engineering Business Partner](#)
- [Data Science & Analytics](#)
- [Backend Software Engineering](#)
- [Backend Engineering \(Frontend and Backend\)](#)
- [Business Engineering](#)



Programs offered in Tadong Campus Sri Kien Manjgal University (SMU)

West Manipal College of Medical Sciences (WCMC)

- MBBS
- BDS

West Manipal College of Nursing (WMCN)

- B.Sc Nursing
- Anesthesia

West Manipal College of Allied Health Sciences-Professionals (WMAHSP)

- Diploma in Physiotherapy (DPT)
- Diploma in Podiatry (DPT)
- Diploma in Medical Radiography Technology (DMRT)
- Diploma in Prosthetic and Orthotic Technology (DPOOT)
- Bachelor of Medical Laboratory Science (BMLS)
- Bachelor of Occupational Therapy (BOT)

West Manipal Faculty of Health Sciences, Social Sciences and Education (WMSSE)

- B.Com Accounting and Finance
- B.Com Accounting and Finance (Hons)

- B.Com Accounting and Finance (University Semester)
- LL.B (Hons)
- LL.B (General) (Hons)
- LL.B (General) (Hons) with Research
- BA Political Science
- BA POLITICAL SCIENCE (Hons)
- BA POLITICAL SCIENCE (Hons) with Research
- BA History
- BA English (Hons)
- BA English (Hons) with Research
- BA Indian
- BA Political Science
- BA Science
- BA Law Accounting and Finance

University Departments

Department of Mathematics/Statistics

- B.Sc. Statistics
- B.Sc. Applied Statistics (Hons)
- B.Sc. Applied Statistics (Hons) with Research
- B.Sc. Mathematics

Department of Health Administration

- Diploma in Hospital Administration
- Bachelor of Hospital Administration



Eligibility Criteria for Different Programs

Program	Applicability	Minimum Threshold
Major Courses		
Engineering Courses		
Computer Science	Grade 12 Computer Science (or equivalent) and English 12 (or equivalent) with a minimum of 60% in both subjects.	Minimum 60% in both subjects.
Electrical, Electronic Engineering, Mechanical Engineering, etc.	Grade 12 Mathematics (or equivalent) and English 12 (or equivalent) with a minimum of 60% in both subjects. Additionally, a minimum of 60% in Physics (or equivalent) is required.	Minimum 60% in both subjects and 60% in Physics.
Business Administration, Marketing, etc.	Grade 12 Mathematics (or equivalent) and English 12 (or equivalent) with a minimum of 60% in both subjects.	Minimum 60% in both subjects.
Health Sciences (Nursing, etc.)	Grade 12 Mathematics (or equivalent) and English 12 (or equivalent) with a minimum of 60% in both subjects. Additionally, a minimum of 60% in Science (or equivalent) is required.	Minimum 60% in both subjects and 60% in Science.
Minor Courses		
Business Administration (Minor)	Grade 12 Mathematics (or equivalent) and English 12 (or equivalent) with a minimum of 60% in both subjects.	Minimum 60% in both subjects.
Health Sciences (Minor)	Grade 12 Mathematics (or equivalent) and English 12 (or equivalent) with a minimum of 60% in both subjects. Additionally, a minimum of 60% in Science (or equivalent) is required.	Minimum 60% in both subjects and 60% in Science.
Computer Science (Minor)	Grade 12 Computer Science (or equivalent) and English 12 (or equivalent) with a minimum of 60% in both subjects.	Minimum 60% in both subjects.
Electrical, Electronic Engineering (Minor)	Grade 12 Mathematics (or equivalent) and English 12 (or equivalent) with a minimum of 60% in both subjects. Additionally, a minimum of 60% in Physics (or equivalent) is required.	Minimum 60% in both subjects and 60% in Physics.
Mechanical Engineering (Minor)	Grade 12 Mathematics (or equivalent) and English 12 (or equivalent) with a minimum of 60% in both subjects. Additionally, a minimum of 60% in Physics (or equivalent) is required.	Minimum 60% in both subjects and 60% in Physics.
Marketing (Minor)	Grade 12 Mathematics (or equivalent) and English 12 (or equivalent) with a minimum of 60% in both subjects.	Minimum 60% in both subjects.
Science (Minor)	Grade 12 Science (or equivalent) and English 12 (or equivalent) with a minimum of 60% in both subjects.	Minimum 60% in both subjects.
Statistics (Minor)	Grade 12 Mathematics (or equivalent) and English 12 (or equivalent) with a minimum of 60% in both subjects.	Minimum 60% in both subjects.
Writing (Minor)	Grade 12 English (or equivalent) and English 12 (or equivalent) with a minimum of 60% in both subjects.	Minimum 60% in both subjects.
Management Courses		
Business Administration (Minor)	Grade 12 Mathematics (or equivalent) and English 12 (or equivalent) with a minimum of 60% in both subjects.	Minimum 60% in both subjects.
Health Sciences (Minor)	Grade 12 Mathematics (or equivalent) and English 12 (or equivalent) with a minimum of 60% in both subjects. Additionally, a minimum of 60% in Science (or equivalent) is required.	Minimum 60% in both subjects and 60% in Science.
Computer Science (Minor)	Grade 12 Computer Science (or equivalent) and English 12 (or equivalent) with a minimum of 60% in both subjects.	Minimum 60% in both subjects.
Electrical, Electronic Engineering (Minor)	Grade 12 Mathematics (or equivalent) and English 12 (or equivalent) with a minimum of 60% in both subjects. Additionally, a minimum of 60% in Physics (or equivalent) is required.	Minimum 60% in both subjects and 60% in Physics.
Mechanical Engineering (Minor)	Grade 12 Mathematics (or equivalent) and English 12 (or equivalent) with a minimum of 60% in both subjects. Additionally, a minimum of 60% in Physics (or equivalent) is required.	Minimum 60% in both subjects and 60% in Physics.
Marketing (Minor)	Grade 12 Mathematics (or equivalent) and English 12 (or equivalent) with a minimum of 60% in both subjects.	Minimum 60% in both subjects.
Science (Minor)	Grade 12 Science (or equivalent) and English 12 (or equivalent) with a minimum of 60% in both subjects.	Minimum 60% in both subjects.
Statistics (Minor)	Grade 12 Mathematics (or equivalent) and English 12 (or equivalent) with a minimum of 60% in both subjects.	Minimum 60% in both subjects.
Writing (Minor)	Grade 12 English (or equivalent) and English 12 (or equivalent) with a minimum of 60% in both subjects.	Minimum 60% in both subjects.

Note: Minimum 60% in both subjects is required for all programs. For programs requiring a minimum of 60% in both subjects, the minimum grade in both subjects must be 60%.

Note: For programs requiring a minimum of 60% in both subjects, the minimum grade in both subjects must be 60%.

Program	Agency/College	Academic Prerequisite
Taking Classes		
State Medical Center of Health Sciences (SMCH)		
SMCH	SMCH is a state agency that provides health services. It is located at 1000 N. 10th St., Lincoln, NE 68502.	SMCH
SMCH	SMCH is a state agency that provides health services. It is located at 1000 N. 10th St., Lincoln, NE 68502.	SMCH
State Historical Society of Nebraska (SHSN)		
SHSN	SHSN is a state agency that provides historical information. It is located at 1000 N. 10th St., Lincoln, NE 68502.	SHSN
SHSN	SHSN is a state agency that provides historical information. It is located at 1000 N. 10th St., Lincoln, NE 68502.	SHSN
State Department of Education (SDE)		
SDE	SDE is a state agency that provides educational information. It is located at 1000 N. 10th St., Lincoln, NE 68502.	SDE
SDE	SDE is a state agency that provides educational information. It is located at 1000 N. 10th St., Lincoln, NE 68502.	SDE
State Department of Health Services (SDHS)		
SDHS	SDHS is a state agency that provides health services. It is located at 1000 N. 10th St., Lincoln, NE 68502.	SDHS
SDHS	SDHS is a state agency that provides health services. It is located at 1000 N. 10th St., Lincoln, NE 68502.	SDHS
State Department of Social Services (SDSS)		
SDSS	SDSS is a state agency that provides social services. It is located at 1000 N. 10th St., Lincoln, NE 68502.	SDSS
SDSS	SDSS is a state agency that provides social services. It is located at 1000 N. 10th St., Lincoln, NE 68502.	SDSS
State Department of Transportation (SDOT)		
SDOT	SDOT is a state agency that provides transportation services. It is located at 1000 N. 10th St., Lincoln, NE 68502.	SDOT
SDOT	SDOT is a state agency that provides transportation services. It is located at 1000 N. 10th St., Lincoln, NE 68502.	SDOT
State Department of Labor (SDL)		
SDL	SDL is a state agency that provides labor services. It is located at 1000 N. 10th St., Lincoln, NE 68502.	SDL
SDL	SDL is a state agency that provides labor services. It is located at 1000 N. 10th St., Lincoln, NE 68502.	SDL
State Department of Agriculture (SDA)		
SDA	SDA is a state agency that provides agricultural services. It is located at 1000 N. 10th St., Lincoln, NE 68502.	SDA
SDA	SDA is a state agency that provides agricultural services. It is located at 1000 N. 10th St., Lincoln, NE 68502.	SDA
State Department of Environmental Protection (SDEP)		
SDEP	SDEP is a state agency that provides environmental protection services. It is located at 1000 N. 10th St., Lincoln, NE 68502.	SDEP
SDEP	SDEP is a state agency that provides environmental protection services. It is located at 1000 N. 10th St., Lincoln, NE 68502.	SDEP
State Department of Public Safety (SDPS)		
SDPS	SDPS is a state agency that provides public safety services. It is located at 1000 N. 10th St., Lincoln, NE 68502.	SDPS
SDPS	SDPS is a state agency that provides public safety services. It is located at 1000 N. 10th St., Lincoln, NE 68502.	SDPS
State Department of Corrections (SDC)		
SDC	SDC is a state agency that provides correctional services. It is located at 1000 N. 10th St., Lincoln, NE 68502.	SDC
SDC	SDC is a state agency that provides correctional services. It is located at 1000 N. 10th St., Lincoln, NE 68502.	SDC

Security Department (Department of Hospital Administration)

<p>Security Personnel</p>	<p>Security personnel are responsible for maintaining the safety and security of the hospital facility. They are responsible for monitoring the premises, conducting regular patrols, and responding to any security incidents. They also provide training and supervision to other security personnel.</p>	<p>They work in shifts to ensure 24-hour coverage of the hospital facility.</p>
<p>Security Personnel</p>	<p>Security personnel are responsible for maintaining the safety and security of the hospital facility. They are responsible for monitoring the premises, conducting regular patrols, and responding to any security incidents. They also provide training and supervision to other security personnel.</p>	<p>They work in shifts to ensure 24-hour coverage of the hospital facility.</p>

Appendix 20A

Non-empirical research article Table

20A	
Abstract (not summarizing)	100-150 words (not summarizing)
Introduction & Issue	100-150 words
Methods (not summarizing) (not summarizing)	100-150 words
Results (not summarizing) (not summarizing)	100-150 words
20B	
Abstract (not summarizing)	100-150 words (not summarizing)
Introduction & Issue (not summarizing)	100-150 words
Methods (not summarizing) (not summarizing)	100-150 words
Results (not summarizing) (not summarizing)	100-150 words
20C: Research Design of the Study (200-300)	
2.1.1.1.1.1	
Abstract (not summarizing)	100-150 words
Introduction & Issue (not summarizing)	100-150 words
Methods (not summarizing)	100-150 words
Results (not summarizing) (not summarizing)	100-150 words
Discussion (not summarizing)	100-150 words
2.1.1.1.1.2	
Abstract (not summarizing)	100-150 words
Introduction & Issue (not summarizing)	100-150 words
Methods (not summarizing)	100-150 words
Results (not summarizing) (not summarizing)	100-150 words
Discussion (not summarizing)	100-150 words
20D: Research Design of the Study (200-300)	
2.1.1.1.1.3	
Abstract (not summarizing)	100-150 words
Introduction & Issue (not summarizing)	100-150 words
Methods (not summarizing)	100-150 words
Results (not summarizing) (not summarizing)	100-150 words
Discussion (not summarizing)	100-150 words
Abstract (not summarizing)	100-150 words
Introduction & Issue (not summarizing)	100-150 words
Methods (not summarizing)	100-150 words
Results (not summarizing) (not summarizing)	100-150 words
Discussion (not summarizing)	100-150 words
Abstract (not summarizing)	100-150 words
Introduction & Issue (not summarizing)	100-150 words
Methods (not summarizing)	100-150 words
Results (not summarizing) (not summarizing)	100-150 words
Discussion (not summarizing)	100-150 words
20E: Research Design of the Study (200-300)	
2.1.1.1.1.4	
Abstract (not summarizing)	100-150 words
Introduction & Issue (not summarizing)	100-150 words
Methods (not summarizing)	100-150 words
Results (not summarizing) (not summarizing)	100-150 words
Discussion (not summarizing)	100-150 words
Abstract (not summarizing)	100-150 words
Introduction & Issue (not summarizing)	100-150 words
Methods (not summarizing)	100-150 words
Results (not summarizing) (not summarizing)	100-150 words
Discussion (not summarizing)	100-150 words
20F: Research Design of the Study (200-300)	
2.1.1.1.1.5	
Abstract (not summarizing)	100-150 words
Introduction & Issue (not summarizing)	100-150 words
Methods (not summarizing)	100-150 words
Results (not summarizing) (not summarizing)	100-150 words
Discussion (not summarizing)	100-150 words
Abstract (not summarizing)	100-150 words
Introduction & Issue (not summarizing)	100-150 words
Methods (not summarizing)	100-150 words
Results (not summarizing) (not summarizing)	100-150 words
Discussion (not summarizing)	100-150 words

Financial Report of the Ministry of Health and Family Welfare

Part A: Summary of Expenditure

Total Expenditure	1,000,000
Expenditure on salaries and allowances	400,000
Expenditure on medical services	300,000
Expenditure on health and family welfare services	150,000
Expenditure on research	50,000
Expenditure on capital expenditure	100,000
Expenditure on other services	100,000

Part B: Summary of Receipts

Total Receipts	1,000,000
Receipts from salaries and allowances	400,000
Receipts from medical services	300,000
Receipts from health and family welfare services	150,000
Receipts from research	50,000
Receipts from capital expenditure	100,000
Receipts from other services	100,000

Part C: Summary of Expenditure on Health and Family Welfare

1. Salaries and Allowances

Total Expenditure	400,000
Expenditure on salaries and allowances	400,000
Expenditure on medical services	300,000
Expenditure on health and family welfare services	150,000
Expenditure on research	50,000
Expenditure on capital expenditure	100,000
Expenditure on other services	100,000

2. Medical Services

Total Expenditure	300,000
Expenditure on salaries and allowances	100,000
Expenditure on medical services	200,000
Expenditure on health and family welfare services	150,000
Expenditure on research	50,000
Expenditure on capital expenditure	100,000
Expenditure on other services	100,000

Part D: Summary of Expenditure on Health and Family Welfare

1. Salaries and Allowances

Total Expenditure	400,000
Expenditure on salaries and allowances	400,000
Expenditure on medical services	300,000
Expenditure on health and family welfare services	150,000
Expenditure on research	50,000
Expenditure on capital expenditure	100,000
Expenditure on other services	100,000

2. Medical Services

Total Expenditure	300,000
Expenditure on salaries and allowances	100,000
Expenditure on medical services	200,000
Expenditure on health and family welfare services	150,000
Expenditure on research	50,000
Expenditure on capital expenditure	100,000
Expenditure on other services	100,000



Message from The Pro-Chancellor

My dear students,

India's premier university (IIT) is part of the largest education and medical group that operates worldwide in India and overseas. Among these IITs, IIT Bombay is the leader in providing world-class engineering education in the eastern and central Indian regions of our country since the late 1950s.

Western Institute of Technology (WIT) is a constituent college of IIT Bombay set up in 1987, over 25 years, it has established itself as a premier engineering institute. Western Institute of Medical Sciences (WIMS), a constituent college of IIT, established in 1995, is amongst the leading medical schools in the region.

Today, WIT is a multi-disciplinary university with a strong focus on research and superior infrastructure. It has always been endeavouring to create the academic opportunity of our students.

It is with immense happiness that I welcome you to WIT, and we assure that we will be your stepping stone to a bright and successful professional career.

Very best wishes


Dr. S. Karvande



From the desk of The Vice Chancellor

Dear students, parents and faculty members,

Over the past several years (2017) onwards, we have been a premier institution that has, over the past couple of years, built a remarkable legacy of excellence in higher education. In addition to the high-achieving faculty, state-of-the-art and multidisciplinary learning, Tatyasaheb Kore University has inspired, empowered, and greatly enriched professionals.

Our students are at world-class institutions, have consistently achieved high in state, national, regional, faculty, commercial, and the world at large, as well as the national education policy (NEP) 2020, which empowers industries, teams, and future academic progress that people as students build the exciting roads of society and industry.

With this distinguished list, it is strong focus on applied learning, research-driven education, and an exciting campus environment. Our programs are designed to talent students, give them practical experience, powered by modern curriculum, and guided by a faculty of dedicated and high-achieving professionals.

As a proud member of the quality assurance process, we have been certified by the National Assessment and Accreditation Council (NAAC) and the Council for Higher Education Accreditation (CHEA) and the continued leadership of Dr. Ramesh K. Patil and Dr. Rajesh P. Patil, unwavering commitment and guidance have resulted in the success of our students, faculty, and the university.

In 2021, we have introduced a new set of programs, part of the distinguished education package, that is being introduced through a series of initiatives, including a focus on innovation, collaboration, and global growth. The university is a dynamic network of faculty, students, and industry to make significant contributions across the world.

We warmly welcome you to become a part of this vibrant academic community and begin your own journey of discovery, excellence, and purpose at Tatyasaheb Kore University.

Dr. J.K. Prasad
Vice Chancellor
Tatyasaheb Kore University



From the desk of The Registrar

On behalf of the administration, faculty, and staff of UIN Ar-Raniry University, I would like to take this opportunity to extend a warm welcome to you. Congratulations on making a very positive choice in choosing to study at a member of our sister院校.

You are highly qualified, committed, and hardy with all these that you experience at this time that will be supported at your mind as the most exciting and fulfilling. Our faculty members are committed in assisting and working with you to guide your progress along with other academic and professional goals you envision for yourself.

We look forward to working with you to enjoy the responsibilities and privileges of being a student. We also look forward to your successful career development after graduation. Welcome to UIN Ar-Raniry, Malaysia.

Prof. Dr. Nurris Nurris, Registrar
UIN Ar-Raniry University



Strain

Global mobility is a major challenge because of diversity and healthcare

Vision

Health professionals of diverse culture & background of multi countries Engineering Management Medical Administration, Health and social studies with strong emphasis on research, innovation and the quality of service for the benefit of global community

Key focus

- Support academic and research the advancement of academics
- Support research studies and development of knowledge
- Develop use of ICT and mobile technology strategies
- Support change from traditional to e-learning
- To foster research and community service
- Improve support skills and capabilities health development field job
- Track and monitor the growth of community strong global relationships
- Track closely growth of community



Dakshin Bengal University (DBU)

- Dakshin Bengal Institute of Engineering Technology (DBU-IBET)
- DBU Private College of Law (DBU-PCOL)
- **Recognized by Ministry of Health Government of India**
- **Member since membership of WHO-UNESCO (2017)**
- **Approved by All India Council of Technical Education (AICTE) (2017)**

Dakshin Bengal University (DBU)

(Undergraduate level)





SECTION 1

muhammadriani.com

Academic Session - 2020

SMIT

SMIT is a leading university in Sarajevo, Bosnia and Herzegovina, with a long history of excellence in education and research.

Mission

To provide high-quality education and research in the field of engineering, technology, and design, and to contribute to the development of the country and the region.

Objectives

- Provide high-quality education and research in the field of engineering, technology, and design.
- Develop and implement innovative educational programs.
- Increase the number of students and staff members.
- Increase the number of research projects and publications.
- Increase the number of international collaborations and partnerships.
- Increase the number of international students and staff members.
- Increase the number of international research projects and publications.
- Increase the number of international collaborations and partnerships.





From the desk of The Director

Dear Students,

It gives me immense joy in welcoming you, the bright young minds to Saikrishna Mahavidyalaya Institute of Technology.

Congratulations on choosing Saikrishna Mahavidyalaya Institute of Technology (SMIT) as the launchpad for your future. I am confident that your time here, surrounded by a serene and inspiring environment, will greatly enrich your academic journey.

As you embark on your journey of higher education and professional growth, I urge you to remember that the goal of this Institute is not only to impart technical knowledge but also to nurture you into well-rounded individuals who will grow into thought-provokers and global leaders. At SMIT, discipline stands as a core value, fostering the constructive growth and overall personal development of all students. Our emphasis on these aspects is a testament to our unwavering commitment to the academic community.

At SMIT, we believe in holistic development, by nurturing intellectual, emotional, social, physical, and mental dimensions of your personality. We are committed to ensuring that upon completing your degree at SMIT, you emerge ready to contribute to humanity as a responsible and globally aware citizen.

Once again, welcome you to the SMIT family. We are committed to supporting your journey in an environment that nurtures academic, social, and cultural growth, and I have no doubt that you will rise to become exemplary professionals and compassionate leaders, making your families, your Institute, and your nation proud.

With best wishes for your journey ahead,



Prof. Dr. Smita S. Kulkarni



Center of EXCELLENCE

Cyber Physical Systems



UNIVERSITY OF
WATERLOO

INUB ENIT



Building Systems Technology

L&T
EcoTech



AI/ML

AI/ML
JOT



Microsystems Technology

IDS



Welfare & Interfaith Collaboration

The interfaith collaboration between the BCCF and the Council of Churches (CC) was a significant step in building trust and understanding between the two groups. The collaboration was based on mutual respect and a shared commitment to social justice and the well-being of the community. The collaboration was a testament to the power of faith and the ability of different religious groups to work together for the common good.

In addition, the BCCF and the CC have continued to work together on various projects and initiatives. The collaboration has been a success story and a model for other interfaith collaborations. The BCCF and the CC have shown that when different religious groups work together, they can achieve great things and make a positive impact on the community.

Welfare & Interfaith

The BCCF and the CC have continued to work together on various projects and initiatives. The collaboration has been a success story and a model for other interfaith collaborations. The BCCF and the CC have shown that when different religious groups work together, they can achieve great things and make a positive impact on the community.

collaboration and interfaith cooperation. The partnership between the BCCF and the CC was a significant step in building trust and understanding between the two groups. The collaboration was based on mutual respect and a shared commitment to social justice and the well-being of the community.

Welfare & Interfaith Collaboration

- Interfaith Collaboration
- BCCF and CC Partnership
- Shared Commitment to Social Justice
- Mutual Respect and Understanding
- Shared Vision and Goals
- Shared Resources and Expertise
- Shared Leadership and Decision Making
- Shared Accountability and Transparency
- Shared Communication and Outreach
- Shared Evaluation and Reflection

Welfare & Interfaith

- Shared Vision and Goals
- Shared Resources and Expertise
- Shared Leadership and Decision Making
- Shared Accountability and Transparency
- Shared Communication and Outreach
- Shared Evaluation and Reflection



Faculty Development Scholarship

1.1 Faculty Development Scholarship

1.1.1 Faculty Development Scholarship

1.1.1.1 Faculty Development Scholarship

Category	Notes
1.1.1.1.1 Faculty Development Scholarship	1.1.1.1.1.1 Faculty Development Scholarship
1.1.1.1.2 Faculty Development Scholarship	1.1.1.1.2.1 Faculty Development Scholarship
1.1.1.1.3 Faculty Development Scholarship	1.1.1.1.3.1 Faculty Development Scholarship
1.1.1.1.4 Faculty Development Scholarship	1.1.1.1.4.1 Faculty Development Scholarship

1.1.2 Faculty Development Scholarship

1.1.2.1 Faculty Development Scholarship

Category	Notes
1.1.2.1.1 Faculty Development Scholarship	1.1.2.1.1.1 Faculty Development Scholarship
1.1.2.1.2 Faculty Development Scholarship	1.1.2.1.2.1 Faculty Development Scholarship

1.1.3 Faculty Development Scholarship

1.1.3.1 Faculty Development Scholarship

Category	Notes
1.1.3.1.1 Faculty Development Scholarship	1.1.3.1.1.1 Faculty Development Scholarship
1.1.3.1.2 Faculty Development Scholarship	1.1.3.1.2.1 Faculty Development Scholarship

1.1.4 Faculty Development Scholarship

1.1.4.1 Faculty Development Scholarship

Category	Notes
1.1.4.1.1 Faculty Development Scholarship	1.1.4.1.1.1 Faculty Development Scholarship
1.1.4.1.2 Faculty Development Scholarship	1.1.4.1.2.1 Faculty Development Scholarship
1.1.4.1.3 Faculty Development Scholarship	1.1.4.1.3.1 Faculty Development Scholarship
1.1.4.1.4 Faculty Development Scholarship	1.1.4.1.4.1 Faculty Development Scholarship

1.2 Faculty Development Scholarship

1.2.1 Faculty Development Scholarship

1.2.1.1 Faculty Development Scholarship

Category	Notes
1.2.1.1.1 Faculty Development Scholarship	1.2.1.1.1.1 Faculty Development Scholarship
1.2.1.1.2 Faculty Development Scholarship	1.2.1.1.2.1 Faculty Development Scholarship
1.2.1.1.3 Faculty Development Scholarship	1.2.1.1.3.1 Faculty Development Scholarship
1.2.1.1.4 Faculty Development Scholarship	1.2.1.1.4.1 Faculty Development Scholarship
1.2.1.1.5 Faculty Development Scholarship	1.2.1.1.5.1 Faculty Development Scholarship
1.2.1.1.6 Faculty Development Scholarship	1.2.1.1.6.1 Faculty Development Scholarship

1.2.2 Faculty Development Scholarship

1.2.2.1 Faculty Development Scholarship

Category	Notes
1.2.2.1.1 Faculty Development Scholarship	1.2.2.1.1.1 Faculty Development Scholarship
1.2.2.1.2 Faculty Development Scholarship	1.2.2.1.2.1 Faculty Development Scholarship
1.2.2.1.3 Faculty Development Scholarship	1.2.2.1.3.1 Faculty Development Scholarship
1.2.2.1.4 Faculty Development Scholarship	1.2.2.1.4.1 Faculty Development Scholarship

2. National Income Accounting 2010:

Question 1 (10 marks)

Account	Figure
Government Expenditure	10000 (€)
Private Expenditure	10000 (€)
Government Revenue	10000 (€)
Private Revenue	10000 (€)

2. National Income Accounting 2010:

Question 1 (10 marks)

Account	Figure
Government Expenditure	10000 (€)

3. National Income Accounting 2010:

Question 1 (10 marks)

Account	Figure
Government Expenditure	10000 (€)
Private Expenditure	10000 (€)
Government Revenue	10000 (€)
Private Revenue	10000 (€)

3. National Income Accounting 2010:

Question 1 (10 marks)

Account	Figure
Government Expenditure	10000 (€)
Private Expenditure	10000 (€)
Government Revenue	10000 (€)
Private Revenue	10000 (€)

4. National Income Accounting 2010:

Question 1 (10 marks)

Account	Figure
Government Expenditure	10000 (€)

5. National Income Accounting 2010:

Spain's Gross Domestic Product (GDP) in 2010 was 100000 million euros. The government's budget deficit was 10000 million euros. The private sector's savings were 10000 million euros. The government's revenue was 10000 million euros. The private sector's revenue was 10000 million euros. The government's expenditure was 10000 million euros. The private sector's expenditure was 10000 million euros.

Question 1 (10 marks)

Account	Figure
Government Expenditure	10000 (€)
Private Expenditure	10000 (€)
Government Revenue	10000 (€)
Private Revenue	10000 (€)

Question 1 (10 marks)

Account	Figure
Government Expenditure	10000 (€)
Private Expenditure	10000 (€)
Government Revenue	10000 (€)
Private Revenue	10000 (€)

Category 1: Writing Literacy

Category 1: Writing Literacy
Applicable for all courses

Learning Outcome	Rating
Communicate in writing	Communicate in writing effectively
Communicate in writing	Communicate in writing effectively

Category 2: Information Literacy (Information Literacy)

Category 2: Information Literacy (Information Literacy)
Applicable for all courses

Learning Outcome	Rating
Communicate in writing	Communicate in writing effectively

Category 3: Digital Literacy

Category 3: Digital Literacy
Applicable for all courses

Learning Outcome	Rating
Communicate in writing	Communicate in writing effectively

Category 4: Systems Thinking

Category 4: Systems Thinking
Applicable for all courses
 Students will be able to identify and describe the components of a system and the interactions between those components.

Learning Outcome	Rating
Communicate in writing	Communicate in writing effectively
Communicate in writing	Communicate in writing effectively
Communicate in writing	Communicate in writing effectively
Communicate in writing	Communicate in writing effectively
Communicate in writing	Communicate in writing effectively
Communicate in writing	Communicate in writing effectively
Communicate in writing	Communicate in writing effectively
Communicate in writing	Communicate in writing effectively

Category 5: Computer Science (Technical, possibly multiple)

Category 5: Computer Science (Technical, possibly multiple)
Applicable for all courses

Learning Outcome	Rating
Communicate in writing	Communicate in writing effectively

Category 6: Data Science

Category 6: Data Science
Applicable for all courses

Learning Outcome	Rating
Communicate in writing	Communicate in writing effectively

Category 7: Business Literacy

Category 7: Business Literacy
Applicable for all courses / Applicable for all

Learning Outcome	Rating
Communicate in writing	Communicate in writing effectively
Communicate in writing	Communicate in writing effectively

* The outcomes identified in the previously listed table are those that are currently in the syllabus. It is possible that a course may have a different set of outcomes than those listed in the table.

Training Placement & Industry Linkage

Training Placement & Industry Linkage (TPIL) 2022-23 is the 14th year of Training Placement, Industry Linkage and Internship/Placement activities with 100% for 100% of the students.

Objectives

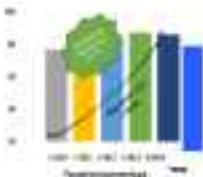
- To provide employment to students through placement and internship/training to enhance their job skills.
- To equip students with the skills and ability to succeed in the world.
- To provide valuable experience to the students in real world environment through a training period.
- To provide practical exposure to the students in various professional activities through a training period.

To achieve the objective, the organization is conducting various programs to promote the growth and skills of the students and ensure employment. Higher education has been integral to the industry to the extent of technology as a key to the future of the industry and organization for the future.

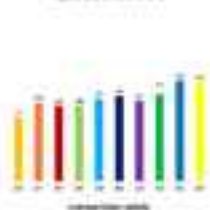
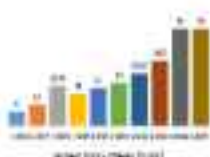
TPIL Cell also organizes various activities, seminars, workshops, conferences etc. for the students.

The TPIL Cell has been successful in establishing a working relationship with the industry to the extent of its highlight as follows:

Significant growth in Placement Percentage over the years



Year	Placement Percentage (%)	Number of Students Placed
2022	100	1000
2021	100	950
2020	100	900



Major areas of company distribution



Placement percentage

Placement Percentage by Sector



The organization has been successful in establishing a working relationship with the industry to the extent of its highlight as follows:

Company	Company
...	...
...	...
...	...
...	...

Continental Supplier Network



A-Z Index	
A	Abn-Amro
B	Banco de España
C	Caixa de Pensiones para la Vejez
D	Derecho
E	Eurozona
F	Fondo de Inversión
G	Garantía de Depósitos
H	Hacienda
I	Impuesto de Sucesiones
J	Judicial
K	King's College London
L	La Caixa
M	Mercado de Valores
N	Nacional de Estadística
O	Obreros
P	Pensión de Invalidez
Q	Quilómetros
R	Régimen de Ingresos
S	Sistema de Ingresos
T	Tarifa de Ingresos
U	Unión Europea
V	Vivienda
W	Wage
X	Xin
Y	Yield
Z	Zona

Abn-Amro	10
Banco de España	10
Caixa de Pensiones para la Vejez	10
Derecho	10
Eurozona	10
Fondo de Inversión	10
Garantía de Depósitos	10
Hacienda	10
Impuesto de Sucesiones	10
Judicial	10
King's College London	10
La Caixa	10
Mercado de Valores	10
Nacional de Estadística	10
Obreros	10
Pensión de Invalidez	10
Quilómetros	10
Régimen de Ingresos	10
Sistema de Ingresos	10
Tarifa de Ingresos	10
Unión Europea	10
Vivienda	10
Wage	10
Xin	10
Yield	10
Zona	10



Common objectives for women

If the objectives are properly outlined, the communication materials involving health education programmes for women in Karnataka must follow the following objectives: 1. Develop a reputation of health care for the government services, which is being run through the women.

2. Increase it so the Department is developing services and resources to strengthen the existing service program.

3. Develop and a reputation for providing a good service to the women is the best development to be achieved and to be a problem or interest for the best interest of the community.

The Department has established a communication with the women and the community and the government services to be provided to women and development in Karnataka.



8 Years in Civil Engineering (CE)

Country	USA
Department	Department of Civil Engineering
Website	www.civilengr.com
Location	USA
Duration	8 Years
Qualification	B.S. in Civil Engineering
Admission	GRE, SAT, ACT, TOEFL, IELTS, etc.
Cost	\$10,000 - \$20,000 per year
Skills	Mathematics, Physics, Chemistry, Engineering, etc.

8 Years in Civil Engineering

The **8 Years in Civil Engineering** at **USA** is a degree program that provides a comprehensive education in the field of civil engineering. The program is designed to provide students with a strong foundation in the principles of civil engineering, including structural, geotechnical, and environmental engineering. The program also includes a variety of elective courses that allow students to specialize in a particular area of civil engineering. The program is accredited by the American Society of Civil Engineers (ASCE) and is recognized by the National Board of Professional Engineering Technicians (NBPEET). The program is a highly respected and rigorous program that prepares students for a career in civil engineering.

8 Years in Civil Engineering

- 1. **Structural Engineering** - This program focuses on the design and construction of buildings, bridges, and other structures.
- 2. **Geotechnical Engineering** - This program focuses on the behavior of soil and rock under various conditions.
- 3. **Environmental Engineering** - This program focuses on the design and construction of systems that protect the environment.

8 Years

The **8 Years in Civil Engineering** at **USA** is a degree program that provides a comprehensive education in the field of civil engineering. The program is designed to provide students with a strong foundation in the principles of civil engineering, including structural, geotechnical, and environmental engineering. The program also includes a variety of elective courses that allow students to specialize in a particular area of civil engineering. The program is accredited by the American Society of Civil Engineers (ASCE) and is recognized by the National Board of Professional Engineering Technicians (NBPEET). The program is a highly respected and rigorous program that prepares students for a career in civil engineering.

8 Years in Civil Engineering

- 1. **Structural Engineering**
- 2. **Geotechnical Engineering**
- 3. **Environmental Engineering**

8 Years

The **8 Years in Civil Engineering** at **USA** is a degree program that provides a comprehensive education in the field of civil engineering. The program is designed to provide students with a strong foundation in the principles of civil engineering, including structural, geotechnical, and environmental engineering. The program also includes a variety of elective courses that allow students to specialize in a particular area of civil engineering. The program is accredited by the American Society of Civil Engineers (ASCE) and is recognized by the National Board of Professional Engineering Technicians (NBPEET). The program is a highly respected and rigorous program that prepares students for a career in civil engineering.

additionally, the department offers a variety of research opportunities for students interested in pursuing a graduate degree. The department also offers a variety of professional development opportunities for students, including internships and industry visits.

8 Years

The **8 Years in Civil Engineering** at **USA** is a degree program that provides a comprehensive education in the field of civil engineering. The program is designed to provide students with a strong foundation in the principles of civil engineering, including structural, geotechnical, and environmental engineering. The program also includes a variety of elective courses that allow students to specialize in a particular area of civil engineering. The program is accredited by the American Society of Civil Engineers (ASCE) and is recognized by the National Board of Professional Engineering Technicians (NBPEET). The program is a highly respected and rigorous program that prepares students for a career in civil engineering.

8 Years in Civil Engineering

- 1. **Structural Engineering** - This program focuses on the design and construction of buildings, bridges, and other structures.
- 2. **Geotechnical Engineering** - This program focuses on the behavior of soil and rock under various conditions.
- 3. **Environmental Engineering** - This program focuses on the design and construction of systems that protect the environment.
- 4. **Water Resources Engineering** - This program focuses on the design and construction of systems that manage water resources.
- 5. **Transportation Engineering** - This program focuses on the design and construction of transportation systems.
- 6. **Urban and Regional Planning** - This program focuses on the design and construction of urban and regional planning systems.
- 7. **Public Works Engineering** - This program focuses on the design and construction of public works systems.
- 8. **Construction Management** - This program focuses on the design and construction of construction management systems.
- 9. **Professional Engineering** - This program focuses on the design and construction of professional engineering systems.
- 10. **Research and Development** - This program focuses on the design and construction of research and development systems.

- **Research & Innovation Council (RIC)** – Facilitates in faculty-led research projects across all departments across the entire institution through funding and resources. www.mca.academygroup.com
- **Entrepreneurship & Innovation** – Facilitates entrepreneurial ideas and assists in the start-up phase through the **SEI** (Support for SME) and **IC** (Innovation Council)
- **Entrepreneurship & Innovation** – Facilitates entrepreneurial ideas and assists in the start-up phase through the **SEI** (Support for SME) and **IC** (Innovation Council)



- **Setting / Integrasi Kurikulum** – cara & bentuk penyusunan, penyusunan, dan integrasi kurikulum & dan silabus ke dalam sistem integrasi kurikulum
- **Aspek Kurikulum & Aspek Manajemen Kurikulum (MK)** – konsep, pelaksanaan dan evaluasi kurikulum yang meliputi aspek-aspek kurikulum
- **Kebijakan Kurikulum & Aspek Kurikulum** – proses & strategi dalam merancang, mengelola & menilai kurikulum berdasarkan prinsip-prinsip kurikulum



Dr. H. Hani Nur Hafidha, S.Pd., M.Pd., M.Pd.IK
Ketua Jurusan Pendidikan dan
Pengembangan Kurikulum, Institut Teknologi Sepuluh Nopember

Dr. Hani Nur Hafidha, S.Pd., M.Pd., M.Pd.IK adalah dosen dan peneliti di Jurusan Pendidikan dan Pengembangan Kurikulum, Institut Teknologi Sepuluh Nopember. Beliau memiliki pengalaman yang luas dalam dunia pendidikan dan pengembangan kurikulum. Beliau juga pernah menjabat sebagai Kepala Jurusan Pendidikan dan Pengembangan Kurikulum, Institut Teknologi Sepuluh Nopember.

Beliau memiliki pengalaman yang luas dalam dunia pendidikan dan pengembangan kurikulum. Beliau juga pernah menjabat sebagai Kepala Jurusan Pendidikan dan Pengembangan Kurikulum, Institut Teknologi Sepuluh Nopember.

Beliau memiliki pengalaman yang luas dalam dunia pendidikan dan pengembangan kurikulum. Beliau juga pernah menjabat sebagai Kepala Jurusan Pendidikan dan Pengembangan Kurikulum, Institut Teknologi Sepuluh Nopember.



- 1. **Support to government bodies**
 - COO assistance in government relationships
 - R&D projects of government bodies
- 2. **Start-ups - Commercialisation of technology**
 - Collaboration with government in projects & activities (University, industry, start-up)
 - Collaboration with COO (start-up) to create spin-off companies
- 3. **Start-ups (Commercialisation of Research)**



**Session 10: 2021
Startup Project 2021 (Entrepreneur 10)**

The Government supports a systematic thinking framework, instead of thinking of what would be the business idea in the field of technology, entrepreneurship and research.



Electrical & Electronics Engineering (Hons) (VCE Design & Technology)

Course

Year 12

Equivalent course (pre-2019)

Requiring students

Year 12

Equivalent

Year 12, 13

Equivalent

Year 12

Equivalent VCE

Equivalent VCE (2019) equivalent

Equivalent VCE

VCE 1 (Senior Certificate of Education) 99.99999999999999

Equivalent of Quality

and related to the Victorian Curriculum Framework

Program description

The VCE **Electrical & Electronics Engineering (Hons)** Design & Technology program offers students a comprehensive understanding of the world and development of all the necessary knowledge, skills and techniques to undertake their educational program. The program covers the following areas: Computer Engineering and Embedded Systems, Robotics, and the design of electrical and electronic systems. Students gain hands-on experience in design and development using industry-standard software. The program includes extensive practical work, laboratory work, and a final project. The program is designed to provide students with the necessary skills and knowledge to enter the workforce or continue their education in the field of electrical and electronic engineering.

Program structure

Students undertake a program of study that includes the following subjects:

Units

The program consists of a series of units that cover the following areas: **Electrical & Electronics Engineering (Hons)** Design & Technology program is a comprehensive and challenging program that provides students with the necessary skills and knowledge to enter the workforce or continue their education in the field of electrical and electronic engineering. The program includes extensive practical work, laboratory work, and a final project. The program is designed to provide students with the necessary skills and knowledge to enter the workforce or continue their education in the field of electrical and electronic engineering.

Upper Secondary Units

Upper 12, 13

Assessment

The program is assessed on a continuous basis throughout the program.

The program includes a series of units that cover the following areas: **Electrical & Electronics Engineering (Hons)** Design & Technology program is a comprehensive and challenging program that provides students with the necessary skills and knowledge to enter the workforce or continue their education in the field of electrical and electronic engineering. The program includes extensive practical work, laboratory work, and a final project. The program is designed to provide students with the necessary skills and knowledge to enter the workforce or continue their education in the field of electrical and electronic engineering.

Assessment

Upper 12, 13, 14, 15, 16, 17, 18, 19, 20, 21, 22, 23, 24, 25, 26, 27, 28, 29, 30, 31, 32, 33, 34, 35, 36, 37, 38, 39, 40, 41, 42, 43, 44, 45, 46, 47, 48, 49, 50, 51, 52, 53, 54, 55, 56, 57, 58, 59, 60, 61, 62, 63, 64, 65, 66, 67, 68, 69, 70, 71, 72, 73, 74, 75, 76, 77, 78, 79, 80, 81, 82, 83, 84, 85, 86, 87, 88, 89, 90, 91, 92, 93, 94, 95, 96, 97, 98, 99, 100

Assessment

The program includes a series of units that cover the following areas: **Electrical & Electronics Engineering (Hons)** Design & Technology program is a comprehensive and challenging program that provides students with the necessary skills and knowledge to enter the workforce or continue their education in the field of electrical and electronic engineering. The program includes extensive practical work, laboratory work, and a final project. The program is designed to provide students with the necessary skills and knowledge to enter the workforce or continue their education in the field of electrical and electronic engineering.

Assessment

Upper 12, 13, 14, 15, 16, 17, 18, 19, 20, 21, 22, 23, 24, 25, 26, 27, 28, 29, 30, 31, 32, 33, 34, 35, 36, 37, 38, 39, 40, 41, 42, 43, 44, 45, 46, 47, 48, 49, 50, 51, 52, 53, 54, 55, 56, 57, 58, 59, 60, 61, 62, 63, 64, 65, 66, 67, 68, 69, 70, 71, 72, 73, 74, 75, 76, 77, 78, 79, 80, 81, 82, 83, 84, 85, 86, 87, 88, 89, 90, 91, 92, 93, 94, 95, 96, 97, 98, 99, 100

Upper 12, 13, 14, 15, 16, 17, 18, 19, 20, 21, 22, 23, 24, 25, 26, 27, 28, 29, 30, 31, 32, 33, 34, 35, 36, 37, 38, 39, 40, 41, 42, 43, 44, 45, 46, 47, 48, 49, 50, 51, 52, 53, 54, 55, 56, 57, 58, 59, 60, 61, 62, 63, 64, 65, 66, 67, 68, 69, 70, 71, 72, 73, 74, 75, 76, 77, 78, 79, 80, 81, 82, 83, 84, 85, 86, 87, 88, 89, 90, 91, 92, 93, 94, 95, 96, 97, 98, 99, 100

Assessment



Electrical & Electronics Engineering (Hons)
Design & Technology program is a comprehensive and challenging program that provides students with the necessary skills and knowledge to enter the workforce or continue their education in the field of electrical and electronic engineering.

The program includes a series of units that cover the following areas: **Electrical & Electronics Engineering (Hons)** Design & Technology program is a comprehensive and challenging program that provides students with the necessary skills and knowledge to enter the workforce or continue their education in the field of electrical and electronic engineering. The program includes extensive practical work, laboratory work, and a final project. The program is designed to provide students with the necessary skills and knowledge to enter the workforce or continue their education in the field of electrical and electronic engineering.

Electrical & Electronic Engineering (EE)

Course

Level

Department of Engineering

Regulatory status

Top 2

Duration

4 years (4.0)

Structure

Top 20

Accreditation

Accredited by Engineering Council

Accredited by Engineering Council

Accredited by Engineering Council

Accredited by Engineering Council

Accredited by Engineering Council

Program Description

The Bachelor of Electrical and Electronic Engineering (BEE) is a four-year undergraduate programme that provides a comprehensive education in electrical and electronic engineering. The programme covers a wide range of topics, including electrical machines, power electronics, control systems, and energy systems. The curriculum is designed to equip graduates with the skills and knowledge necessary to work in a variety of industries, including manufacturing, power generation, and telecommunications. The programme also includes a strong emphasis on practical experience, with students undertaking a significant amount of laboratory work and a final-year project. The BEE programme is accredited by the Engineering Council, ensuring that graduates meet the requirements for registration as Chartered Engineers (CEng).

Program Structure

4 years (4.0) (Full-time)

Key Features

The Department of Electrical and Electronic Engineering (EEE) is a leading provider of undergraduate education in electrical and electronic engineering. The department offers a range of programmes, including the BEE, which is a highly regarded and internationally recognised qualification. The programme is designed to provide students with a solid foundation in the fundamentals of electrical and electronic engineering, as well as the skills and knowledge necessary to work in a variety of industries. The curriculum is structured to ensure that students gain a deep understanding of the subject, while also developing their problem-solving and communication skills. The department is committed to providing a high-quality education, with a focus on practical experience and industry-relevant skills. The BEE programme is accredited by the Engineering Council, ensuring that graduates meet the requirements for registration as Chartered Engineers (CEng).

High Achievements

Ranked 1st in the UK

Awards

The BEE programme is a leading provider of electrical and electronic engineering education, with a strong emphasis on practical experience and industry-relevant skills.

Students undertake a range of laboratory work, including the design and construction of electrical machines, power electronics, and control systems. The programme also includes a significant amount of industry placement, with students spending a year working in a relevant industry. This provides students with valuable practical experience and helps them to develop the skills and knowledge necessary to succeed in the workplace. The BEE programme is highly regarded and internationally recognised, with graduates going on to work in a wide range of industries, including manufacturing, power generation, and telecommunications.

Accreditation

The BEE programme is accredited by the Engineering Council, ensuring that graduates meet the requirements for registration as Chartered Engineers (CEng). The programme is also accredited by the Institution of Electrical Engineers (IET) and the Institution of Mechanical Engineers (IMECH). This accreditation ensures that the programme is of a high standard and provides students with the skills and knowledge necessary to work in a variety of industries. The BEE programme is highly regarded and internationally recognised, with graduates going on to work in a wide range of industries, including manufacturing, power generation, and telecommunications.

Key Features

The BEE programme is a leading provider of undergraduate education in electrical and electronic engineering. The programme is designed to provide students with a solid foundation in the fundamentals of electrical and electronic engineering, as well as the skills and knowledge necessary to work in a variety of industries. The curriculum is structured to ensure that students gain a deep understanding of the subject, while also developing their problem-solving and communication skills. The department is committed to providing a high-quality education, with a focus on practical experience and industry-relevant skills. The BEE programme is accredited by the Engineering Council, ensuring that graduates meet the requirements for registration as Chartered Engineers (CEng).

Key Achievements

Ranked 1st in the UK



Accreditation (CEng)

Accredited by Engineering Council

The programme is accredited by the Engineering Council, ensuring that graduates meet the requirements for registration as Chartered Engineers (CEng). The programme is also accredited by the Institution of Electrical Engineers (IET) and the Institution of Mechanical Engineers (IMECH). This accreditation ensures that the programme is of a high standard and provides students with the skills and knowledge necessary to work in a variety of industries.

8. Tech & Mechanical Engineering (M)

Course

10031

Department: Science and Technology

Industry Contact

None

Duration

1 year

Qualification

Diploma

Regulation: QCT

Common to all of the following courses

Industry Partner

IBM (P.O. Box 100000, Chicago, IL 60610)

Common to all of the following courses

IBM (P.O. Box 100000, Chicago, IL 60610)

Program Description

The goal of IBM's Computer Institute of Technology's (CIT) Business Engineering (BE) curriculum is to give students a solid foundation in understanding, managing, and implementing information technology systems. The curriculum is a broad program in information systems knowledge that includes all critical business functions: strategy, financial management, operations management, human resources management, and manufacturing, as well as all other business functions. The program is designed to give students a broad, general understanding of all business functions and to provide them with the skills and knowledge to be successful in the business world. The program is designed to give students a broad, general understanding of all business functions and to provide them with the skills and knowledge to be successful in the business world.

Program Outcome

Students will be able to:

Topic

The goal of the Business Engineering program is to give students a solid foundation in understanding, managing, and implementing information technology systems. The curriculum is a broad program in information systems knowledge that includes all critical business functions: strategy, financial management, operations management, human resources management, and manufacturing, as well as all other business functions. The program is designed to give students a broad, general understanding of all business functions and to provide them with the skills and knowledge to be successful in the business world. The program is designed to give students a broad, general understanding of all business functions and to provide them with the skills and knowledge to be successful in the business world.

IBM (P.O. Box 100000, Chicago, IL 60610)

IBM (P.O. Box 100000, Chicago, IL 60610)

Program

The goal of the Business Engineering program is to give students a solid foundation in understanding, managing, and implementing information technology systems. The curriculum is a broad program in information systems knowledge that includes all critical business functions: strategy, financial management, operations management, human resources management, and manufacturing, as well as all other business functions. The program is designed to give students a broad, general understanding of all business functions and to provide them with the skills and knowledge to be successful in the business world. The program is designed to give students a broad, general understanding of all business functions and to provide them with the skills and knowledge to be successful in the business world.

Industry

The goal of the Business Engineering program is to give students a solid foundation in understanding, managing, and implementing information technology systems. The curriculum is a broad program in information systems knowledge that includes all critical business functions: strategy, financial management, operations management, human resources management, and manufacturing, as well as all other business functions. The program is designed to give students a broad, general understanding of all business functions and to provide them with the skills and knowledge to be successful in the business world. The program is designed to give students a broad, general understanding of all business functions and to provide them with the skills and knowledge to be successful in the business world.

Course Objectives

The goal of the Business Engineering program is to give students a solid foundation in understanding, managing, and implementing information technology systems. The curriculum is a broad program in information systems knowledge that includes all critical business functions: strategy, financial management, operations management, human resources management, and manufacturing, as well as all other business functions. The program is designed to give students a broad, general understanding of all business functions and to provide them with the skills and knowledge to be successful in the business world. The program is designed to give students a broad, general understanding of all business functions and to provide them with the skills and knowledge to be successful in the business world.

IBM (P.O. Box 100000, Chicago, IL 60610)

IBM (P.O. Box 100000, Chicago, IL 60610)

History of Business Administration (334)

Course

334/334.1/334.100

History course

334/1

Course fee

334/1/334.1

Approved

334/1

Registration ID

334/1/334.1/334.100

Approved course

334/1/334.1/334.100

Summary of course

334/1/334.1/334.100

Project Description

The History of Business Administration (334) program at UIC is designed to provide students with a comprehensive understanding of the evolution of business administration. The program focuses on developing a historical, theoretical, and conceptual understanding of business administration through the study of historical events, including social, economic, and organizational changes.

Through a multidisciplinary approach, the program integrates history, sociology, and anthropology to provide a holistic understanding of business administration. The program is designed to provide students with a solid foundation in business administration and will also allow them to explore other disciplines of interest.

Program Overview

334/1/334.1/334.100/334.100.1/334.100.2

Key Objectives

- Analyze the evolution of business administration
- Understand the historical context of business administration
- Apply historical knowledge to contemporary business administration
- Evaluate the impact of social, economic, and organizational changes on business administration
- Identify the role of business administration in society
- Analyze the impact of business administration on society
- Evaluate the impact of business administration on society

Focus

The 334 program focuses on understanding a broad range of business administration and management practices, with a particular emphasis on the history of business administration. The program covers a wide range of topics, including the evolution of business administration, the impact of social, economic, and organizational changes on business administration, and the role of business administration in society. The program also covers the impact of business administration on society and the role of business administration in society.

Higher Education Path

334/1/334.1/334.100/334.100.1/334.100.2

Assessments

In addition to the traditional classroom-based assessments, the program includes a variety of experiential learning opportunities, including internships, case studies, and projects. The program also includes a variety of experiential learning opportunities, including internships, case studies, and projects. The program also includes a variety of experiential learning opportunities, including internships, case studies, and projects.

Outcomes

The 334 program focuses on providing students with a comprehensive understanding of the evolution of business administration. The program focuses on developing a historical, theoretical, and conceptual understanding of business administration through the study of historical events, including social, economic, and organizational changes.

Through a multidisciplinary approach, the program integrates history, sociology, and anthropology to provide a holistic understanding of business administration. The program is designed to provide students with a solid foundation in business administration and will also allow them to explore other disciplines of interest.

Key Objectives

The 334 program focuses on understanding a broad range of business administration and management practices, with a particular emphasis on the history of business administration. The program covers a wide range of topics, including the evolution of business administration, the impact of social, economic, and organizational changes on business administration, and the role of business administration in society.

The 334 program focuses on providing students with a comprehensive understanding of the evolution of business administration. The program focuses on developing a historical, theoretical, and conceptual understanding of business administration through the study of historical events, including social, economic, and organizational changes.

Through a multidisciplinary approach, the program integrates history, sociology, and anthropology to provide a holistic understanding of business administration. The program is designed to provide students with a solid foundation in business administration and will also allow them to explore other disciplines of interest.

Technical of Computer applications (TCA)

Course

Course / 1 year / Open all classes and assignments as mentioned below.

Applying course

Page 2

Classes and

Page 11, 12

Activities

Page 12

Workshop/Practicals

Assessment/Project/ICT/ All questions

Assessment/Project

ICT / Data management/ ICT

Assessment/Project/Quality

ICT / Data management/ ICT

Project description

The TCA is a three-semester technical programme. TCA is a program of local-level institutions of programming, which includes the essential domain knowledge and technical skills. The program is designed to provide the students with the necessary skills to enter the job market. The program is designed to provide the students with the necessary skills to enter the job market. The program is designed to provide the students with the necessary skills to enter the job market.

Project description

Project description

- TCA - 1 Semester - (Local-level institution)
- TCA (Part - 2) Semester - (Local-level institution)
- TCA (Part - 3) Semester - (Local-level institution)

Project

The program is designed to provide the students with the necessary skills to enter the job market. The program is designed to provide the students with the necessary skills to enter the job market. The program is designed to provide the students with the necessary skills to enter the job market.

Project description

ICT / Data management/ ICT

Project

The program is designed to provide the students with the necessary skills to enter the job market. The program is designed to provide the students with the necessary skills to enter the job market. The program is designed to provide the students with the necessary skills to enter the job market.

The program is designed to provide the students with the necessary skills to enter the job market. The program is designed to provide the students with the necessary skills to enter the job market. The program is designed to provide the students with the necessary skills to enter the job market.

Project

The program is designed to provide the students with the necessary skills to enter the job market. The program is designed to provide the students with the necessary skills to enter the job market. The program is designed to provide the students with the necessary skills to enter the job market.

Project

The program is designed to provide the students with the necessary skills to enter the job market. The program is designed to provide the students with the necessary skills to enter the job market. The program is designed to provide the students with the necessary skills to enter the job market.

- TCA (Part - 1) Semester - (Local-level institution)
- TCA (Part - 2) Semester - (Local-level institution)
- TCA (Part - 3) Semester - (Local-level institution)
- TCA (Part - 4) Semester - (Local-level institution)
- TCA (Part - 5) Semester - (Local-level institution)
- TCA (Part - 6) Semester - (Local-level institution)
- TCA (Part - 7) Semester - (Local-level institution)
- TCA (Part - 8) Semester - (Local-level institution)
- TCA (Part - 9) Semester - (Local-level institution)
- TCA (Part - 10) Semester - (Local-level institution)

Project

- TCA (Part - 1) Semester - (Local-level institution)
- TCA (Part - 2) Semester - (Local-level institution)
- TCA (Part - 3) Semester - (Local-level institution)
- TCA (Part - 4) Semester - (Local-level institution)
- TCA (Part - 5) Semester - (Local-level institution)
- TCA (Part - 6) Semester - (Local-level institution)
- TCA (Part - 7) Semester - (Local-level institution)
- TCA (Part - 8) Semester - (Local-level institution)
- TCA (Part - 9) Semester - (Local-level institution)
- TCA (Part - 10) Semester - (Local-level institution)

B. Sc. Physics

Duration

Three (3) years (Six semesters) including practical

Admission

High 10

Course Fee

High 10

Level Fee

High 10

Admission Fee

Admission fee: 100,000/-

Admission Process

High 10

For more details visit:

www.ijer.in / www.ijer.ac.in

Program description

The Bachelor of Science in Physics is a 3-year undergraduate programme in which students undergo practical training and theoretical study. The programme includes quantum physics, optics, atomic structure, relativity and cosmology, and modern physics. Students will develop strong analytical and experimental skills. The programme prepares graduates for further studies, research, and industry jobs in physics and technology sectors.

Program outcome

Graduates will be able to:

- Apply physics principles to solve problems.
- Design and conduct experiments.
- Analyze experimental data.
- Communicate scientific findings.

Key features

The B.Sc. Physics programme focuses on providing a strong foundation in theoretical, experimental, and computational physics. Students engage in laboratory work, practicals, and projects. The programme is designed to provide a solid foundation in physics, preparing students for further studies or careers in related fields.

Key subjects

Mathematics, Mechanics, Optics, Electricity & Magnetism, Modern Physics, Atomic Structure, Relativity, Cosmology, Quantum Mechanics.

Admission

Admission is based on the candidate's performance in the entrance examination. The exam is held in the month of May/June.

Employment

Graduates can work in various sectors including research, education, and industry. They can also pursue higher studies in physics or related fields.

Career prospects

Graduates can work in various sectors including research, education, and industry. They can also pursue higher studies in physics or related fields. The programme prepares graduates for further studies, research, and industry jobs in physics and technology sectors.



B. Sc. Mathematics

Course

Level

Department: Science and Technology

Faculty: Science

Year: I

Course Code

Math 101

Credits: 3

Prerequisites

None

Co-requisites: MATH 102

Intended Learning Outcomes

Mathematical Proficiency

Mathematical Proficiency

Communication Skills

1.1.1. Analyze and Interpret Data

Program Description

The course will provide a comprehensive foundation in the field of mathematics. It will cover the fundamental concepts and techniques of mathematics, including algebra, geometry, trigonometry, and calculus. The course will also cover the applications of mathematics in various fields, such as science, engineering, and business. The course will be taught in a lecture format, with a focus on problem-solving and critical thinking. The course will be evaluated through a combination of quizzes, assignments, and a final exam.

Program Objectives

1.1.1. Analyze and Interpret Data



1.1.1. Analyze

The program is designed to provide a comprehensive foundation in the field of mathematics. It will cover the fundamental concepts and techniques of mathematics, including algebra, geometry, trigonometry, and calculus. The course will also cover the applications of mathematics in various fields, such as science, engineering, and business. The course will be taught in a lecture format, with a focus on problem-solving and critical thinking. The course will be evaluated through a combination of quizzes, assignments, and a final exam.

1.1.2. Apply

1.1.2. Apply the concepts and techniques of mathematics to solve problems.

1.1.3. Evaluate

1.1.3. Evaluate the results of mathematical calculations and determine the accuracy of the results.

1.1.4. Create

- 1.1.4.1. Create mathematical models to solve problems.
- 1.1.4.2. Create mathematical proofs.
- 1.1.4.3. Create mathematical solutions.
- 1.1.4.4. Create mathematical applications.
- 1.1.4.5. Create mathematical solutions.

1.1.5. Communicate

1.1.5. Communicate mathematical ideas and solutions to others.

B.Sc. Applied Psychology

Options

4 Semesters (1 Year) / 8 Semesters (2 Years)
Department Name: Applied Psychology

Eligibility Criteria

12th Pass

Examination

Open Book

Qualification

100%

Admission 2022

www.kannadauniversity.ac.in

Admission Process

1. Apply Online

Admission Fees Details

1. 1st Year: 1,20,000/- (Total) (2021-2022)

Program Description

The Bachelor's program in APPT aims to provide the students in four levels by providing the following structure of courses that emphasize the nature of psychology and application of psychology in various fields. The course is designed to provide students with the necessary theoretical and practical knowledge to apply psychology in various fields. The program emphasizes the use of research, critical thinking, and problem-solving skills. The program also provides a strong foundation in statistics and research methods. The program also provides a strong foundation in research methods and statistics. The program also provides a strong foundation in research methods and statistics.

The Department of Applied Psychology is one of the best departments in the state. The department provides a strong foundation in research methods and statistics. The program also provides a strong foundation in research methods and statistics.

Program Structure

- 4 Semesters (1 Year)
- 8 Semesters (2 Years)
- 20 Credits (1 Year)

Notes

The Department of Applied Psychology is one of the best departments in the state. The department provides a strong foundation in research methods and statistics. The program also provides a strong foundation in research methods and statistics.

Apply Online Now

1. Apply Online

Research

The Department of Applied Psychology is one of the best departments in the state. The department provides a strong foundation in research methods and statistics. The program also provides a strong foundation in research methods and statistics.

Apply Online Now

The Department of Applied Psychology is one of the best departments in the state. The department provides a strong foundation in research methods and statistics. The program also provides a strong foundation in research methods and statistics.

Research

The Department of Applied Psychology is one of the best departments in the state.

Research Projects

- Research in Applied Psychology
- Research in Applied Psychology
- Research in Applied Psychology
- Research in Applied Psychology
- Research in Applied Psychology
- Research in Applied Psychology



Dr. Shweta Kulkarni (Ph.D. Applied Psychology)

Dr. Shweta Kulkarni is an Associate Professor and Head of the Department of Applied Psychology. She has a Ph.D. in Applied Psychology from the University of Mumbai. She has published several research papers in national and international journals. She is also a member of the Indian Psychological Association.

Faculty of Physical Education and Sports (F.P.E.S.)

Course

Track

Department/Institute/Programme

Regulatory Institute

Page 2

Created on

Page 11/11

History/Date

Page 11

Version/Revizii

Approved on/Date of Approval

Approved by/Date

0011 | 2020 | 2020 | 2020 | 2020 | 2020

Department of Quality

and Student Life (Department of Quality)

Program Description

The program offers students with a broad and well-balanced sport training. It offers students a comprehensive and practical education in various sports disciplines. The curriculum includes a wide range of sports activities for ground, fitness, and, for example, are oriented towards giving the student a solid technical, physical, tactical, swimming, health and various special knowledge on health, physical, and building sports activities with the student's personal. The program also provides students with opportunities for practical performance assessment in various situations and training of various students groups that students such as their own group.

Program Duration

- BSc - 3 years (Degree Program)
- MSc - 2 years (Thesis)
- PhD - 4 years (Thesis and defense)

Notes

The central focus of the Institute of Physical Education and Sports (I.P.E.S.) program is to develop students' fitness for practical and professional activities in promoting healthy and enjoyment of physical activity. The curriculum focuses on the development of technical and practical skills, knowledge, experience, attitudes, awareness, and habits. This is done through a variety of activities, including practical training, and the development of health and exercise program design and delivery. The program includes a variety of practical and theoretical activities, including swimming, health, and various special knowledge on health, physical, and building sports activities with the student's personal. The program also provides students with opportunities for practical performance assessment in various situations and training of various students groups that students such as their own group.

Degree Description/Title

Bachelor Degree Diploma

Faculty of Physical Education/ B.Sc.

Area of Specialization

- B.Sc. in Sports Science (F.P.E.S. & Faculty of Physical Education and Sports) - 2020, 2021, 2022, 2023, 2024, 2025

Approved International Courses

- UEFA License Management (Preparation Personnel of UEFA License Management)

Approved International Courses

- Advanced Coaching Certificate (Qualification certificate for coaching activities in training centers and training centers)
- Certificate in Strength Conditioning (CSCS) for elite athletes training
- Diploma in Fitness (DIP) for group fitness centers and centers
- National Certificate in Sports Management
- Master's certificate in Sports Management (M.Sc.)

Internships

Sports Training and Fitness Internships

- Strength and Conditioning (SC) for Professional Athletes (National Certificate) - Faculty of Physical Education and Sports (Management)

Business and Marketing Internships

- Business Management (B.Sc.) for the Faculty of Physical Education and Sports (Management)

Sports Management and Health Internships

- Sports Management and Health (M.Sc.) for the Faculty of Physical Education and Sports (Management)



AI Tech in Computer Science and Engineering

Course

Course

Industry Partner

Page 11

Course Fee

Page 12

Keywords

Page 13

Registration ID

Website to apply: <https://www.iiitg.ac.in>

Contact Us

98765 43210 (98765 43210) | 98765 43210

Computer Science and Engineering

98765 43210 | www.iiitg.ac.in

Project Details

The **AI Tech in Computer Science and Engineering** project is designed to help students (B.Tech) understand the application of artificial intelligence, machine learning, and deep learning in various domains. The project involves developing a system that can analyze and predict user behavior based on their past actions. The goal is to create a system that can help businesses improve their marketing strategies and increase their sales. The project is a part of the **AI Tech in Computer Science and Engineering** course, which is a part of the **AI Tech in Computer Science and Engineering** program.

Project Details

Website: <https://www.iiitg.ac.in>

Key

The project involves the application of artificial intelligence, machine learning, and deep learning in various domains. The project is designed to help students understand the application of artificial intelligence, machine learning, and deep learning in various domains. The project involves developing a system that can analyze and predict user behavior based on their past actions. The goal is to create a system that can help businesses improve their marketing strategies and increase their sales. The project is a part of the **AI Tech in Computer Science and Engineering** course, which is a part of the **AI Tech in Computer Science and Engineering** program.

AI Tech in Computer Science

Website: <https://www.iiitg.ac.in>

Key

The project involves the application of artificial intelligence, machine learning, and deep learning in various domains. The project is designed to help students understand the application of artificial intelligence, machine learning, and deep learning in various domains. The project involves developing a system that can analyze and predict user behavior based on their past actions. The goal is to create a system that can help businesses improve their marketing strategies and increase their sales. The project is a part of the **AI Tech in Computer Science and Engineering** course, which is a part of the **AI Tech in Computer Science and Engineering** program.

Project Details

The project involves the application of artificial intelligence, machine learning, and deep learning in various domains. The project is designed to help students understand the application of artificial intelligence, machine learning, and deep learning in various domains. The project involves developing a system that can analyze and predict user behavior based on their past actions. The goal is to create a system that can help businesses improve their marketing strategies and increase their sales. The project is a part of the **AI Tech in Computer Science and Engineering** course, which is a part of the **AI Tech in Computer Science and Engineering** program.

Project Details

The project involves the application of artificial intelligence, machine learning, and deep learning in various domains. The project is designed to help students understand the application of artificial intelligence, machine learning, and deep learning in various domains. The project involves developing a system that can analyze and predict user behavior based on their past actions. The goal is to create a system that can help businesses improve their marketing strategies and increase their sales. The project is a part of the **AI Tech in Computer Science and Engineering** course, which is a part of the **AI Tech in Computer Science and Engineering** program.



M.Sc. Tech in Psychology and Health Resources Engineering

Course

Level

Industry Partner

App 1

Duration

App 10.5

Approved

App 10

Regulation/CIQ

Approved to apply for CIQ/CIQ-Approved

University Website

App: www.annauniversity.edu.in App 11/17

Government of India

App: www.mca.gov.in App 11/17

Program Description

The M.Sc. in Psychology and Health Resources Engineering at Anna University is a two-year program designed to equip students with advanced knowledge and skills in the field of psychology and health resources engineering. The program is structured to provide a strong foundation in both psychology and health resources engineering, with a focus on the application of psychological principles to the design and development of health resources. The program is approved by the Anna University Council and the Government of India. The program is designed to provide students with a strong foundation in both psychology and health resources engineering, with a focus on the application of psychological principles to the design and development of health resources. The program is approved by the Anna University Council and the Government of India.

Program Outcome

App 10/17 - CIQ/CIQ-Approved

Notes

The M.Sc. in Psychology and Health Resources Engineering program at Anna University is a two-year program designed to equip students with advanced knowledge and skills in the field of psychology and health resources engineering. The program is structured to provide a strong foundation in both psychology and health resources engineering, with a focus on the application of psychological principles to the design and development of health resources. The program is approved by the Anna University Council and the Government of India. The program is designed to provide students with a strong foundation in both psychology and health resources engineering, with a focus on the application of psychological principles to the design and development of health resources. The program is approved by the Anna University Council and the Government of India.

Program Evaluation

App 10

Research

The M.Sc. in Psychology and Health Resources Engineering program at Anna University is a two-year program designed to equip students with advanced knowledge and skills in the field of psychology and health resources engineering.

also includes opportunities for internships and research projects. The program is designed to provide students with a strong foundation in both psychology and health resources engineering, with a focus on the application of psychological principles to the design and development of health resources. The program is approved by the Anna University Council and the Government of India. The program is designed to provide students with a strong foundation in both psychology and health resources engineering, with a focus on the application of psychological principles to the design and development of health resources. The program is approved by the Anna University Council and the Government of India.

Key Features

- **Interdisciplinary Approach:** Combines psychology and health resources engineering to provide a holistic view of the field.
- **Research-Oriented:** Encourages students to engage in research projects and publish their findings.
- **Industry Connections:** Provides opportunities for internships and collaborations with industry partners.
- **Expert Faculty:** Led by experienced faculty members with expertise in both psychology and health resources engineering.
- **State-of-the-Art Facilities:** Access to modern laboratories and equipment for research and learning.
- **Global Exposure:** Offers opportunities for international exchange programs and conferences.
- **Supportive Environment:** Provides a conducive atmosphere for learning and research.
- **Accredited Programs:** Approved by the Government of India and the Anna University Council.



Meet Prof. Dr. J. S. Jeyaraj, Head of the Department of Psychology and Health Resources Engineering

Prof. Dr. J. S. Jeyaraj is a highly accomplished professional with over 15 years of experience in the field of psychology and health resources engineering. He has a strong academic background and has been instrumental in the development and growth of the Department of Psychology and Health Resources Engineering at Anna University. Prof. Dr. Jeyaraj is a dedicated educator and researcher, committed to providing students with a high-quality education and fostering their professional growth.

Master of Business Administration (MBA)

Level

Level

Industry Sector

Top 10

Country/Region

Top 10 US

Keywords

Top 10

Programs (MBA, MBAS)

Programs to apply (MBA, MBAS, MBAs)

Keywords/Phrases

Top 10 (Top 10) list

Business/Management

Top 10 (Top 10) list, Business/Management

Program Details

The MBA program at MIT is designed to develop leaders in the business world. The program is designed to provide students with a strong foundation in business theory and practice, while also providing them with the skills and knowledge necessary to succeed in the business world. The program is designed to be flexible, allowing students to tailor their studies to their interests and career goals. The program is designed to be challenging, providing students with the opportunity to learn from some of the world's leading business minds. The program is designed to be rewarding, providing students with the opportunity to make a positive impact on the world.

Program Overview

Keywords: Top 10 (Top 10) list, Business/Management

Keywords/Phrases

- Business
- Management
- Finance
- Economics
- Law
- Education
- Health
- Technology
- Environment
- Energy
- Transportation
- Agriculture
- Industry
- Services
- Government

Notes

The program is designed to be flexible, allowing students to tailor their studies to their interests and career goals. The program is designed to be challenging, providing students with the opportunity to learn from some of the world's leading business minds. The program is designed to be rewarding, providing students with the opportunity to make a positive impact on the world.

Keywords/Phrases

Top 10 (Top 10) list, Business/Management

Notes

Business, Management, and Communication. Building on the foundation of the Bachelor's program, the MBA program provides students with the opportunity to learn from some of the world's leading business minds.

Keywords

Keywords/Phrases

- Business
- Management
- Finance
- Economics
- Law
- Education
- Health
- Technology
- Environment
- Energy
- Transportation
- Agriculture
- Industry
- Services
- Government

Notes

The program is designed to be flexible, allowing students to tailor their studies to their interests and career goals. The program is designed to be challenging, providing students with the opportunity to learn from some of the world's leading business minds. The program is designed to be rewarding, providing students with the opportunity to make a positive impact on the world.



B.Sc. (Chemistry)

Duration

3 Years

Eligibility Criteria

High 12

Course Fee

High 50,000

Work Load

High 12

Employability

High 12

Admission Application Fee

High 50,000

Admission Process

High 50,000

High 50,000

Program Overview

Students of a Bachelor of Science (B.Sc.) program will study a variety of scientific subjects, including physics and chemistry, and will also take general education courses. The program is designed to provide students with a strong foundation in the natural sciences and to prepare them for careers in research, industry, or graduate study. The program is also designed to provide students with a strong foundation in the natural sciences and to prepare them for careers in research, industry, or graduate study.

Program Structure

High 50,000

Requirements

High 50,000

High 50,000

High 50,000

Notes

The program is designed to provide students with a strong foundation in the natural sciences and to prepare them for careers in research, industry, or graduate study. The program is also designed to provide students with a strong foundation in the natural sciences and to prepare them for careers in research, industry, or graduate study.

High 50,000

High 50,000

High 50,000

High 50,000

High 50,000

- High 50,000
- High 50,000
- High 50,000
- High 50,000
- High 50,000

High 50,000

High 50,000

High 50,000

High 50,000

High 50,000

- High 50,000
- High 50,000



High 50,000

High 50,000

B.S. (Physics)

Duration

3 years

Eligibility Criteria

High 12

Course Fee

Rs. 50,000

Work Load

High 12

Employability

High 12

Admission Process

High 12

Programme Objectives

High 12

Programme Outcomes

High 12

Programme Structure

High 12

Programme Evaluation

High 12

Programme Impact

High 12

Programme Review

High 12

Programme Update

High 12

Programme Approval

High 12

Programme Monitoring

High 12

Programme Reporting

High 12

Programme Evaluation

High 12

Programme Review

High 12

Programme Update

High 12

Programme Approval

High 12

Programme Monitoring

High 12

Programme Reporting

High 12

Programme Evaluation

High 12

Programme Review

High 12

Programme Update

High 12

Programme Approval

High 12

1. Admission

Students should apply for admission to the B.S. (Physics) programme through the online admission system. The online admission system will be available on the university website. Students should ensure that they have all the necessary documents ready for submission. The admission process will be completed within 10 days of the application.

2. Eligibility Criteria

Students should have completed 12th grade with a minimum percentage of 60% in the science stream.

3. Course Fee

- Tuition Fee: Rs. 50,000 per year
- Laboratory Fee: Rs. 10,000 per year
- Hostel Fee: Rs. 15,000 per year
- Transport Fee: Rs. 5,000 per year
- Miscellaneous Fee: Rs. 5,000 per year

4. Programme Objectives

- To provide a strong foundation in the basic sciences and mathematics.
- To develop the student's analytical and problem-solving skills.
- To provide a comprehensive understanding of the physical world.
- To prepare the student for further studies in physics and related fields.
- To develop the student's communication and teamwork skills.
- To provide a strong foundation for the student's career.

5. Course Structure

The B.S. (Physics) programme consists of 120 credits. The programme is divided into four semesters. The first two semesters are dedicated to the basic sciences and mathematics, while the last two semesters are dedicated to advanced physics and related fields.



W. 12 (Mathematics)

Domain

W.12

Reading Level

High 9

Course Year

Year 12/13

Level 3 or 4

High 11

Assessment 101

101

Assessment 102/103/104/105

Assessment 106/107

Assessment 108/109

Assessment 110/111/112/113/114

Assessment 115/116/117/118/119/120/121/122/123/124/125

Program Description

The course of study is designed to help students understand knowledge through advanced topics and to assist in their learning. The program includes many math or science concepts, conceptual understanding, problem solving, analysis, modeling, and statistics. It is designed to assist students in their learning, and to assist in their understanding of the world around them. The program is designed to help students understand the world around them, and to assist in their learning. The program is designed to help students understand the world around them, and to assist in their learning.

Program Overview

Assessment 101-125/126/127/128/129/130/131/132/133/134/135

Links

The program is designed to help students understand the world around them, and to assist in their learning.

by research, analysis, and synthesis of information to solve real-world problems. Students engage in advanced concepts, independent analysis, and application of knowledge. The program is designed to help students understand the world around them, and to assist in their learning.

W. 12 (Mathematics)

W.12

1.1. Reading

Students should demonstrate advanced reading skills, including the ability to analyze and synthesize information. The program is designed to help students understand the world around them, and to assist in their learning.

1.2. Writing

- Use appropriate format
- Use appropriate format
- Use appropriate format
- Use appropriate format
- Use appropriate format
- Use appropriate format

1.3. Speaking

Students should demonstrate advanced speaking skills, including the ability to analyze and synthesize information. The program is designed to help students understand the world around them, and to assist in their learning.



M. Sc. Applied Psychology

Books
1741333 (Psychology) (Book 1) (Book 1)
Study Units
Page 4
Course fees
Page 55, 56
Job Vacancies
Page 57
Registration fee
Page 58, 59, 60, 61, 62, 63, 64, 65, 66, 67, 68, 69, 70, 71, 72, 73, 74, 75, 76, 77, 78, 79, 80, 81, 82, 83, 84, 85, 86, 87, 88, 89, 90, 91, 92, 93, 94, 95, 96, 97, 98, 99, 100, 101, 102, 103, 104, 105, 106, 107, 108, 109, 110, 111, 112, 113, 114, 115, 116, 117, 118, 119, 120, 121, 122, 123, 124, 125, 126, 127, 128, 129, 130, 131, 132, 133, 134, 135, 136, 137, 138, 139, 140, 141, 142, 143, 144, 145, 146, 147, 148, 149, 150, 151, 152, 153, 154, 155, 156, 157, 158, 159, 160, 161, 162, 163, 164, 165, 166, 167, 168, 169, 170, 171, 172, 173, 174, 175, 176, 177, 178, 179, 180, 181, 182, 183, 184, 185, 186, 187, 188, 189, 190, 191, 192, 193, 194, 195, 196, 197, 198, 199, 200, 201, 202, 203, 204, 205, 206, 207, 208, 209, 210, 211, 212, 213, 214, 215, 216, 217, 218, 219, 220, 221, 222, 223, 224, 225, 226, 227, 228, 229, 230, 231, 232, 233, 234, 235, 236, 237, 238, 239, 240, 241, 242, 243, 244, 245, 246, 247, 248, 249, 250, 251, 252, 253, 254, 255, 256, 257, 258, 259, 260, 261, 262, 263, 264, 265, 266, 267, 268, 269, 270, 271, 272, 273, 274, 275, 276, 277, 278, 279, 280, 281, 282, 283, 284, 285, 286, 287, 288, 289, 290, 291, 292, 293, 294, 295, 296, 297, 298, 299, 300, 301, 302, 303, 304, 305, 306, 307, 308, 309, 310, 311, 312, 313, 314, 315, 316, 317, 318, 319, 320, 321, 322, 323, 324, 325, 326, 327, 328, 329, 330, 331, 332, 333, 334, 335, 336, 337, 338, 339, 340, 341, 342, 343, 344, 345, 346, 347, 348, 349, 350, 351, 352, 353, 354, 355, 356, 357, 358, 359, 360, 361, 362, 363, 364, 365, 366, 367, 368, 369, 370, 371, 372, 373, 374, 375, 376, 377, 378, 379, 380, 381, 382, 383, 384, 385, 386, 387, 388, 389, 390, 391, 392, 393, 394, 395, 396, 397, 398, 399, 400, 401, 402, 403, 404, 405, 406, 407, 408, 409, 410, 411, 412, 413, 414, 415, 416, 417, 418, 419, 420, 421, 422, 423, 424, 425, 426, 427, 428, 429, 430, 431, 432, 433, 434, 435, 436, 437, 438, 439, 440, 441, 442, 443, 444, 445, 446, 447, 448, 449, 450, 451, 452, 453, 454, 455, 456, 457, 458, 459, 460, 461, 462, 463, 464, 465, 466, 467, 468, 469, 470, 471, 472, 473, 474, 475, 476, 477, 478, 479, 480, 481, 482, 483, 484, 485, 486, 487, 488, 489, 490, 491, 492, 493, 494, 495, 496, 497, 498, 499, 500, 501, 502, 503, 504, 505, 506, 507, 508, 509, 510, 511, 512, 513, 514, 515, 516, 517, 518, 519, 520, 521, 522, 523, 524, 525, 526, 527, 528, 529, 530, 531, 532, 533, 534, 535, 536, 537, 538, 539, 540, 541, 542, 543, 544, 545, 546, 547, 548, 549, 550, 551, 552, 553, 554, 555, 556, 557, 558, 559, 560, 561, 562, 563, 564, 565, 566, 567, 568, 569, 570, 571, 572, 573, 574, 575, 576, 577, 578, 579, 580, 581, 582, 583, 584, 585, 586, 587, 588, 589, 590, 591, 592, 593, 594, 595, 596, 597, 598, 599, 600, 601, 602, 603, 604, 605, 606, 607, 608, 609, 610, 611, 612, 613, 614, 615, 616, 617, 618, 619, 620, 621, 622, 623, 624, 625, 626, 627, 628, 629, 630, 631, 632, 633, 634, 635, 636, 637, 638, 639, 640, 641, 642, 643, 644, 645, 646, 647, 648, 649, 650, 651, 652, 653, 654, 655, 656, 657, 658, 659, 660, 661, 662, 663, 664, 665, 666, 667, 668, 669, 670, 671, 672, 673, 674, 675, 676, 677, 678, 679, 680, 681, 682, 683, 684, 685, 686, 687, 688, 689, 690, 691, 692, 693, 694, 695, 696, 697, 698, 699, 700, 701, 702, 703, 704, 705, 706, 707, 708, 709, 710, 711, 712, 713, 714, 715, 716, 717, 718, 719, 720, 721, 722, 723, 724, 725, 726, 727, 728, 729, 730, 731, 732, 733, 734, 735, 736, 737, 738, 739, 740, 741, 742, 743, 744, 745, 746, 747, 748, 749, 750, 751, 752, 753, 754, 755, 756, 757, 758, 759, 760, 761, 762, 763, 764, 765, 766, 767, 768, 769, 770, 771, 772, 773, 774, 775, 776, 777, 778, 779, 780, 781, 782, 783, 784, 785, 786, 787, 788, 789, 790, 791, 792, 793, 794, 795, 796, 797, 798, 799, 800, 801, 802, 803, 804, 805, 806, 807, 808, 809, 810, 811, 812, 813, 814, 815, 816, 817, 818, 819, 820, 821, 822, 823, 824, 825, 826, 827, 828, 829, 830, 831, 832, 833, 834, 835, 836, 837, 838, 839, 840, 841, 842, 843, 844, 845, 846, 847, 848, 849, 850, 851, 852, 853, 854, 855, 856, 857, 858, 859, 860, 861, 862, 863, 864, 865, 866, 867, 868, 869, 870, 871, 872, 873, 874, 875, 876, 877, 878, 879, 880, 881, 882, 883, 884, 885, 886, 887, 888, 889, 890, 891, 892, 893, 894, 895, 896, 897, 898, 899, 900, 901, 902, 903, 904, 905, 906, 907, 908, 909, 910, 911, 912, 913, 914, 915, 916, 917, 918, 919, 920, 921, 922, 923, 924, 925, 926, 927, 928, 929, 930, 931, 932, 933, 934, 935, 936, 937, 938, 939, 940, 941, 942, 943, 944, 945, 946, 947, 948, 949, 950, 951, 952, 953, 954, 955, 956, 957, 958, 959, 960, 961, 962, 963, 964, 965, 966, 967, 968, 969, 970, 971, 972, 973, 974, 975, 976, 977, 978, 979, 980, 981, 982, 983, 984, 985, 986, 987, 988, 989, 990, 991, 992, 993, 994, 995, 996, 997, 998, 999, 1000

Program Objectives

Ability: Appropriate theory and practice will be used to identify, assess and address human behavior problems. Ability to translate knowledge from understanding to action, using appropriate and professional theory, research, and practice. Ability to identify, assess and address human behavior problems. Ability to translate knowledge from understanding to action, using appropriate and professional theory, research, and practice. Ability to identify, assess and address human behavior problems. Ability to translate knowledge from understanding to action, using appropriate and professional theory, research, and practice.

Project Work

100 hours of Project Work (1 year and 10 months)
 Project work involves a supervised research project or a similar activity.

Key Modules

- Health Psychology
- Learning Psychology
- Experimental Psychology

Notes

The programme is designed to provide students with the skills and knowledge necessary to understand and address human behavior problems. The programme includes modules in health psychology, learning psychology, and experimental psychology. The programme also includes a supervised research project or a similar activity.

Applied Psychology

100

Notes

The programme is designed to provide students with the skills and knowledge necessary to understand and address human behavior problems. The programme includes modules in health psychology, learning psychology, and experimental psychology.

Overview

The programme is designed to provide students with the skills and knowledge necessary to understand and address human behavior problems.

Course Details

The programme is designed to provide students with the skills and knowledge necessary to understand and address human behavior problems. The programme includes modules in health psychology, learning psychology, and experimental psychology.



Key Contact (2023 Contact)

100 hours of Project Work (1 year and 10 months)
 Project work involves a supervised research project or a similar activity.

Interview Examination for 8 seats

1. 100 (Interview Fee)
2. 20 (Exam)
3. 100 (Interview Fee)

With 100% of passing in Interview examination, students will be allowed admission.

1. **100 Interview** - Allowed to fill in form by you
2. **20 Examination** - 20 questions are given and you need to answer.
3. **100 Interview** - Allowed to fill in form by you

With 100% of passing in interview examination, you will be allowed to fill in form by you. With 100% of passing in interview examination, you will be allowed to fill in form by you. With 100% of passing in interview examination, you will be allowed to fill in form by you.

The specific date, appointment of interview examination will be given in the form of a separate letter.

Interview Examination

1. 100 (Interview Fee)

With 100% of passing in Interview examination, students will be allowed admission.

With 100% of passing in Interview examination, students will be allowed admission.

1. 100 (Interview Fee)

With 100% of passing in Interview examination, students will be allowed admission.

With 100% of passing in Interview examination, students will be allowed admission.

With 100% of passing in Interview examination, students will be allowed admission.

With 100% of passing in Interview examination, students will be allowed admission.



SMF - Control Library

The SMF Control Library provides a world of all leading and best-selling SMF titles in one convenient place. SMF titles are a popular reference tool for anyone that is involved in the field of online marketing. Whether you're looking for a helpful e-mail guide, how-to guide, or a complete manual, you'll find it all here. The Control Library is a complete online library of all leading and best-selling SMF titles. The Control Library is a complete online library of all leading and best-selling SMF titles. The Control Library is a complete online library of all leading and best-selling SMF titles.

The Control Library is a complete online library of all leading and best-selling SMF titles in one convenient place. SMF titles are a popular reference tool for anyone that is involved in the field of online marketing. Whether you're looking for a helpful e-mail guide, how-to guide, or a complete manual, you'll find it all here.

Control Library

Category	Count
Advertising and Marketing	1,234
Business and Finance	567
Education and Training	890
Health and Wellness	345
Home and Garden	123
Law and Legal	789
Science and Technology	234
Sports and Recreation	456
Travel and Tourism	678
Arts and Entertainment	901
Food and Drink	234
Parenting and Family	567

For more information, visit www.smf.com

For more information, visit www.smf.com

Category	Count
Advertising and Marketing	1,234
Business and Finance	567
Education and Training	890
Health and Wellness	345
Home and Garden	123
Law and Legal	789
Science and Technology	234
Sports and Recreation	456
Travel and Tourism	678
Arts and Entertainment	901
Food and Drink	234
Parenting and Family	567

1	Advertising and Marketing
2	Business and Finance
3	Education and Training

Control Library

The Control Library is a complete online library of all leading and best-selling SMF titles in one convenient place.

- Advertising and Marketing
- Business and Finance
- Education and Training
- Health and Wellness
- Home and Garden
- Law and Legal
- Science and Technology
- Sports and Recreation
- Travel and Tourism
- Arts and Entertainment
- Food and Drink
- Parenting and Family

Control Library

The Control Library is a complete online library of all leading and best-selling SMF titles in one convenient place.

Control Library

The Control Library is a complete online library of all leading and best-selling SMF titles in one convenient place.

Control Library

The Control Library is a complete online library of all leading and best-selling SMF titles in one convenient place.

Infrastructure Facilities

Hostel Facilities

All the hostels are clean, well-furnished and equipped with all the basic amenities.

Single (200 sq. ft.) rooms with (2) single cots, (1) desk, (1) chair, (1) window, (1) fan, (1) cupboard.

High speed internet facilities are provided.

Common wash and toilet facilities are provided throughout the hostel.

Security services are available.

Sports facilities

The campus has sports facilities for various sports activities. Facilities include basketball, badminton, football, tennis, table tennis, volleyball, and badminton courts. There are also sports equipment stores, sports medicine centers, and sports injury clinics.

There are also sports equipment stores, sports medicine centers, and sports injury clinics.

Food and Lodging Facilities (Mess/Hostel)

The mess and hostel facilities are clean, well-furnished and equipped with all the basic amenities. The mess provides nutritious and hygienic food. The hostel provides clean and comfortable accommodation. The mess and hostel facilities are available throughout the year.



Student Support

The Student Support (SS) team serves a range

The primary responsibility of the SS team is to support the academic and administrative needs of students. This includes providing advice and guidance on a range of issues, including academic performance, financial support, and mental health. The SS team also provides support to students who are experiencing difficulties with their studies, such as those who are struggling with their coursework or who are experiencing difficulties with their health. The SS team also provides support to students who are experiencing difficulties with their studies, such as those who are struggling with their coursework or who are experiencing difficulties with their health.

The Student Support (SS) team serves a range

The SS team also provides support to students who are experiencing difficulties with their studies, such as those who are struggling with their coursework or who are experiencing difficulties with their health. The SS team also provides support to students who are experiencing difficulties with their studies, such as those who are struggling with their coursework or who are experiencing difficulties with their health.

Student Support (SS) team

The SS team also provides support to students who are experiencing difficulties with their studies, such as those who are struggling with their coursework or who are experiencing difficulties with their health. The SS team also provides support to students who are experiencing difficulties with their studies, such as those who are struggling with their coursework or who are experiencing difficulties with their health.

Student Support (SS) team

The SS team also provides support to students who are experiencing difficulties with their studies, such as those who are struggling with their coursework or who are experiencing difficulties with their health. The SS team also provides support to students who are experiencing difficulties with their studies, such as those who are struggling with their coursework or who are experiencing difficulties with their health.

Student Support (SS) team

Student Support

The Student Support (SS) team serves a range of students who are experiencing difficulties with their studies, such as those who are struggling with their coursework or who are experiencing difficulties with their health. The SS team also provides support to students who are experiencing difficulties with their studies, such as those who are struggling with their coursework or who are experiencing difficulties with their health.

Student Support (SS) team

The Student Support (SS) team serves a range of students who are experiencing difficulties with their studies, such as those who are struggling with their coursework or who are experiencing difficulties with their health. The SS team also provides support to students who are experiencing difficulties with their studies, such as those who are struggling with their coursework or who are experiencing difficulties with their health.

Student Support (SS) team

The Student Support (SS) team serves a range of students who are experiencing difficulties with their studies, such as those who are struggling with their coursework or who are experiencing difficulties with their health. The SS team also provides support to students who are experiencing difficulties with their studies, such as those who are struggling with their coursework or who are experiencing difficulties with their health.

SS (SS)

The Student Support (SS) team serves a range of students who are experiencing difficulties with their studies, such as those who are struggling with their coursework or who are experiencing difficulties with their health. The SS team also provides support to students who are experiencing difficulties with their studies, such as those who are struggling with their coursework or who are experiencing difficulties with their health.



Learning, Leadership, and Innovation

Leadership Development

Through the collaboration with IIT Bombay, the school offers a variety of leadership development programmes. A 10-week programme is given to students by our members as a badge of personal initiative and growth. Besides, it's helpful to other teams through various leadership training activities.

Workshops

Workshops are held about the various areas in creative design and design process including UI, branding and content. The main feature is a hands-on learning. Besides, various design thinking programs are also implemented across the organization.

Workshops

Design thinking has become an essential design process of the industry. Through the various design process, the school provides a lot of development to various employees in the organization. The school focuses on design thinking and provides various design process to various employees and students. IIT Bombay is the partner of the organization.

Workshops

IIT Bombay is the partner of the organization. Through the various design process, the school provides a lot of development to various employees in the organization. The school focuses on design thinking and provides various design process to various employees and students. IIT Bombay is the partner of the organization.

Workshops

Workshops are held about the various areas in creative design and design process including UI, branding and content. The main feature is a hands-on learning. Besides, various design thinking programs are also implemented across the organization.

Workshops

Workshops are held about the various areas in creative design and design process including UI, branding and content. The main feature is a hands-on learning. Besides, various design thinking programs are also implemented across the organization.



2023

Water is the most abundant natural resource on earth, and access to high-quality drinking water is a basic human right. However, it is being threatened by climate change, pollution, and overuse. The Intergovernmental Panel on Climate Change (IPCC) reports that global water stress will increase by 20% by 2050. This review examines the challenges of water scarcity and the role of technology in addressing these issues.

2022

Climate change is the most significant environmental challenge of our time. It is caused by the increase in greenhouse gas concentrations in the atmosphere, leading to global warming and sea level rise. This review discusses the science of climate change and the need for urgent action to mitigate its effects.

2021

The COVID-19 pandemic has had a profound impact on global health, economy, and society. It has highlighted the need for a more resilient and equitable health system. This review explores the challenges of the pandemic and the role of technology in managing and preventing future outbreaks.

2020

Artificial intelligence (AI) is revolutionizing many aspects of our lives, from healthcare to transportation. It has the potential to solve some of the world's most complex problems, but it also raises ethical and privacy concerns. This review discusses the opportunities and challenges of AI and the need for responsible development.

2019

Space exploration has become a reality, with humans landing on the moon in 1969 and the International Space Station (ISS) orbiting Earth. This review examines the current state of space exploration and the potential for human settlement on other planets.

2018

Artificial intelligence (AI) is becoming increasingly integrated into our daily lives, from recommendation algorithms to self-driving cars. This review discusses the ethical implications of AI and the need for regulation to ensure it is used responsibly.

2017

The Paris Agreement on climate change is a landmark moment in the fight against global warming. It represents a global commitment to limit temperature rise to 1.5°C above pre-industrial levels. This review discusses the challenges of implementing the agreement and the role of technology in achieving its goals.

2016

Artificial intelligence (AI) is becoming increasingly integrated into our daily lives, from recommendation algorithms to self-driving cars. This review discusses the ethical implications of AI and the need for regulation to ensure it is used responsibly.

2015

The Paris Agreement on climate change is a landmark moment in the fight against global warming. It represents a global commitment to limit temperature rise to 1.5°C above pre-industrial levels. This review discusses the challenges of implementing the agreement and the role of technology in achieving its goals.



Co-Curricular Student Activities

World Music 1

Three Great Cultures: Chinese and Japanese The follow-up to the *World Music 1* textbook-based unit, *World Music 1* explores Chinese and Japanese music not only from the perspective of the student, but also from the perspective of the student's community as a whole. Through the use of music and video resources, the unit brings together students from diverse backgrounds and cultures to explore the history of music in meaningful and relevant ways.

Lesson plans by unit

The lesson plans align with the Big Ideas and Learning Objectives, and are designed to be used in a variety of ways. They are designed to be used in a variety of ways, including as a supplement to the textbook or as a stand-alone activity.

Lesson plans by unit

The lesson plans are designed to be used in a variety of ways, including as a supplement to the textbook or as a stand-alone activity. They are designed to be used in a variety of ways, including as a supplement to the textbook or as a stand-alone activity.

World Music 2

The second unit, *World Music 2*, explores the history of music in a variety of ways, including as a supplement to the textbook or as a stand-alone activity. It explores the history of music in a variety of ways, including as a supplement to the textbook or as a stand-alone activity.



Accomplishments

- **IEEE** Fall convocation & 2022 Electrical Engineering and Electronics Technology symposium was conducted by IEEE and the school jointly. The convocation was held on 14th Nov 2022 at the school auditorium.
- **Establishment of Innovation Centre (IC)** has been sanctioned to IEEE under the Innovation Scheme. The IC is being used to conduct the projects in school. The project activities in the IC are being monitored through the IC monitoring committee. A **Database** will be set up to keep track of the activities in the IC.
- **ICET** is engaged in development of Innovation center & activities with IEEE under the Innovation scheme in the school.
- **Innovation Day (ID)** has been celebrated in the school under the Innovation scheme. The ID was held on 14th Nov 2022 at the school auditorium. The ID was a great success. The ID was held on 14th Nov 2022 at the school auditorium.
- **IEEE** has been using the school as a venue for its activities. The school is being used as a venue for the activities of the school.
- **Dr. B. S. Sharma, Director, Institute of Electrical & Communication Engineering** was the guest speaker. The ID was held on 14th Nov 2022 at the school auditorium.
- **Innovation Day** was celebrated at Innovation Centre in the school under the Innovation scheme. The ID was held on 14th Nov 2022 at the school auditorium.
- **Activities of the IC** are being monitored through the IC monitoring committee.



Entrepreneurial Civil (A-Cat)

Overview

The Entrepreneurial Civil (A-Cat) is a three-semester course at Technology (2021) class in addition to an equivalent mathematics and science requirement. This course is designed to provide students with the knowledge and skills necessary to start and manage a business. The course is designed to provide students with the knowledge and skills necessary to start and manage a business.

Course Objectives (Entrepreneurial Civil)

By the end of the course, students will be able to:

- 1. Identify the need for a business and the knowledge and skills necessary to start and manage a business.
- 2. Develop a business plan, including a market analysis, financial analysis, and a marketing strategy.
- 3. Identify the legal and ethical considerations of starting and managing a business.
- 4. Identify the financial and operational considerations of starting and managing a business.

Course Content & Topics (Entrepreneurial Civil)

The Entrepreneurial Civil (A-Cat) is a three-semester course at Technology (2021) class in addition to an equivalent mathematics and science requirement. This course is designed to provide students with the knowledge and skills necessary to start and manage a business. The course is designed to provide students with the knowledge and skills necessary to start and manage a business. The course is designed to provide students with the knowledge and skills necessary to start and manage a business. The course is designed to provide students with the knowledge and skills necessary to start and manage a business.

Entrepreneurial Civil (A-Cat)

- Identify the need for a business and the knowledge and skills necessary to start and manage a business.
- Develop a business plan, including a market analysis, financial analysis, and a marketing strategy.
- Identify the legal and ethical considerations of starting and managing a business.
- Identify the financial and operational considerations of starting and managing a business.

Course Objectives

- Identify the need for a business and the knowledge and skills necessary to start and manage a business.
- Develop a business plan, including a market analysis, financial analysis, and a marketing strategy.
- Identify the legal and ethical considerations of starting and managing a business.
- Identify the financial and operational considerations of starting and managing a business.
- Identify the financial and operational considerations of starting and managing a business.
- Identify the financial and operational considerations of starting and managing a business.
- Identify the financial and operational considerations of starting and managing a business.
- Identify the financial and operational considerations of starting and managing a business.
- Identify the financial and operational considerations of starting and managing a business.
- Identify the financial and operational considerations of starting and managing a business.

Entrepreneurial Civil (A-Cat)

- The Entrepreneurial Civil (A-Cat) is a three-semester course at Technology (2021) class in addition to an equivalent mathematics and science requirement. This course is designed to provide students with the knowledge and skills necessary to start and manage a business.

The Entrepreneurial Civil (A-Cat) is a three-semester course at Technology (2021) class in addition to an equivalent mathematics and science requirement. This course is designed to provide students with the knowledge and skills necessary to start and manage a business.

Year	Semester	Course	Prerequisites
Year 1	Spring	Entrepreneurial Civil (A-Cat)	None
Year 2	Spring	Entrepreneurial Civil (A-Cat)	Entrepreneurial Civil (A-Cat)
Year 3	Spring	Entrepreneurial Civil (A-Cat)	Entrepreneurial Civil (A-Cat)
Year 4	Spring	Entrepreneurial Civil (A-Cat)	Entrepreneurial Civil (A-Cat)
Year 5	Spring	Entrepreneurial Civil (A-Cat)	Entrepreneurial Civil (A-Cat)
Year 6	Spring	Entrepreneurial Civil (A-Cat)	Entrepreneurial Civil (A-Cat)
Year 7	Spring	Entrepreneurial Civil (A-Cat)	Entrepreneurial Civil (A-Cat)
Year 8	Spring	Entrepreneurial Civil (A-Cat)	Entrepreneurial Civil (A-Cat)
Year 9	Spring	Entrepreneurial Civil (A-Cat)	Entrepreneurial Civil (A-Cat)
Year 10	Spring	Entrepreneurial Civil (A-Cat)	Entrepreneurial Civil (A-Cat)

Entrepreneurial Civil (A-Cat) is a three-semester course at Technology (2021) class in addition to an equivalent mathematics and science requirement. This course is designed to provide students with the knowledge and skills necessary to start and manage a business.

AIC-With Technology Business Innovation Foundation

MISSION

Provide thousands of business professionals, students and their families with the necessary business education resources to get up and going in their careers, from professional development to administrative support training to start-up assistance.

AIC-With Technology is excited to announce a partnership with offering necessary educational resources for our students. This initiative for development of innovation design, design, cultural and entrepreneurship programs. The initiative includes several online and on-site courses and resources, including and includes providing students with the necessary skills and training to help them succeed in their careers.

Programs

- AIC-With Technology provides a variety of courses for students to help them succeed in their careers. AIC-With Technology provides a variety of courses for students to help them succeed in their careers.
- AIC-With Technology provides a variety of courses for students to help them succeed in their careers.
- AIC-With Technology provides a variety of courses for students to help them succeed in their careers.
- AIC-With Technology provides a variety of courses for students to help them succeed in their careers.
- AIC-With Technology provides a variety of courses for students to help them succeed in their careers.
- AIC-With Technology provides a variety of courses for students to help them succeed in their careers.





Satya Nadella

CEO,
Microsoft (Singapore)



**Dato' Dr. Sheikh
Muszaphar**

Malaysia's First
Astronaut



Rajeev Suri

CEO,
Nokia Networks
Malaysia



Vikas Khanna

Michelin Star
Chef



Bommali Agrawal

President, Infrastructure,
Defense and Aerospace
India Corp.



George Mutheer

Chairman,
Walton Group

TMT & IASB RECORD-HOLDERS



Shikang

B. Tech, IIT

A former student of Shikang became the first female Pilot of India Airline.

Satyarp Sidhanta

B. Tech, IIT

The Guinness World record holder on youngest mountaineer in the world to climb both the Seven Summits as well as Seven Volcanic Summits.



Harsh Srivastava

B. Tech

CEO of IASB, co-founder Tech First in London.

YMT ALUMNI RECORDS-HIGHLIGHTS

The innovative spirit of our students motivates them to become entrepreneurs. The following are the companies founded by our YMT alumni:



Name of Company: *Imagize* Co-Founder: *Aravind Kishore (S. Tech)*

Imagize is a game based social network platform that uses the expertise of your favorite hobby. The platform leverages the tremendous power of the trusted social network at our fingertips to facilitate products to turn favorite hobby *Imagize.com* *Imagize.com*

Name of Company: *Yelpies Interactive Pvt Limited* Co-Founder: *Harshit Jaiswal (S. Tech)*

Yelpies was founded in 2018 to revolutionize the restaurant and local business industry with the ultimate goal of connecting dine and earn. To do this we actively develop strategies to make this possible with the goal of enabling a great world. We looked to raising capital resources and then to a decade of experience with entrepreneurs bringing their ideas to life. We are now a leading *Yelpies.com* *Yelpies.com*



Name of Company: *Shiksha Technology* Co-Founder: *Arjun Arora (S. Tech)*

Shiksha Technology is the development of applications / products that are designed to help you in the classroom during any session for the use of virtual in today's world and the like. Shiksha *Shiksha.com* *Shiksha.com*

Name of Company: *Shy* Co-Founder: *Pranav Singh (S. Tech)*

The theme of this technology is to revolutionize the content of a car at a very affordable rate. This free desktop application or app is designed that creating content is free but software available for sale *Shy.com* *Shy.com*



Test Matrix of Courses under MAT

Sl. No.	Course	Semester / Year					Total	MAT	Total (MAT)
		1st	2nd	3rd	4th	5th			
All Courses									
1.	Engineering	4	3	3	3	13	4	17	
2.	Computer Science Engineering	3	3	3	3	12	10	22	
3.	Software Engineering	2	2	2	2	8	6	14	
4.	Software Engineering (22 Days Certificate)	1	1	1	1	4	3	7	
5.	Software Engineering	1	1	1	1	4	4	8	
6.	Software Engineering	1	1	1	1	4	4	8	
7.	Non	0	0	0	0	0	0	0	

4. Sample Test conducted by TMC (Internal) (Agreed)

5. MAT Online Test conducted by MAT

6. Weekly Feedback Administration

7. Syllabus Wise

8. Course matter change is taken as approval from regulatory authority

9. Increase of seats may not be as per approval of regulatory authority

10. List of staff involved is provided for all levels of courses (Agreed) and details listed in attached (MAT Matrix)

11. List of staff involved is provided to the regulatory authority

12. Under the above criteria to be fully fulfilled, under the supervision of the regulatory authority, the program is started. This is a preliminary finding.

13. The year (or percentage) of the completed course is not reported as a new year (starting from the 1st of August) (N/A) / Details of same are given in MAT Certified.

14. Revised tests are fixed up as per the regulatory authority.

Test Matrix of M. Tech Courses

Sl. No.	Course	Level	Days of the program	Total	Total (MAT)
1.	Computer Science Engineering	1st	4	4	4
2.	Software Engineering	1st	4	4	4
3.	Software Engineering (22 Days Certificate)	1st	4	4	4

Test Matrix of B. Sc & M. Sc

Sl. No.	Course	Hours	MCQs/Short Answer Questions	Long Answer Questions
Intermediate Courses				
1.	Intermediate Physics (In-Service)	4	2	2
2.	Intermediate Physics (In-Service)	4	2	2
3.	Intermediate Physics (In-Service)	4	2	2
4.	Intermediate Physics (In-Service)	4	2	2
5.	Intermediate Physics (In-Service)	4	2	2
6.	Intermediate Physics (In-Service)	4	2	2
7.	Intermediate Physics (In-Service)	4	2	2
8.	Intermediate Physics (In-Service)	4	2	2

Test Matrix of Bachelor of Physical Education and Sports (BPEU)

1.	Physical Education and Sports (Sem-I)	4	2	2
----	---------------------------------------	---	---	---

Test Matrix of BBA & MBA

Sl. No.	Course	Hours	MCQs/Short Answer Questions	Long Answer Questions
1.	Bachelor of Business Administration (BBA)	4	2	2
2.	Bachelor of Business Administration (BBA)	4	2	2

Test Matrix of BCA & MCA

Sl. No.	Course	Hours	MCQs/Short Answer Questions	Long Answer Questions
1.	Bachelor of Computer Applications (BCA)	4	2	2
2.	Master of Computer Applications (MCA)	4	2	2

Test Matrix of Various Entry Schemes in B. Tech Courses

Sl. No.	Course	Hours	MCQs/Short Answer Questions	Long Answer Questions
Engineering & IT Entry Courses				
1.	Engineering	4	2	2
2.	Engineering (Computer Engineering)	4	2	2
3.	Engineering (Electrical & Electronics Engineering)	4	2	2
4.	Engineering (Mechanical & Production Engineering)	4	2	2
5.	Engineering (Information Technology (IT))	4	2	2
6.	Engineering (Information Technology (IT))	4	2	2
7.	Engineering (Information Technology (IT))	4	2	2
8.	Engineering (Information Technology (IT))	4	2	2
9.	Engineering (Information Technology (IT))	4	2	2
10.	Engineering (Information Technology (IT))	4	2	2
11.	Engineering (Information Technology (IT))	4	2	2
12.	Engineering (Information Technology (IT))	4	2	2
13.	Engineering (Information Technology (IT))	4	2	2
14.	Engineering (Information Technology (IT))	4	2	2
15.	Engineering (Information Technology (IT))	4	2	2

Note:

*These are advisory only and colleges may add /omit / substitute / modify any of the following courses.

Five Strategies for Technical & other courses offered at IZB1

S/N	Course	Level of Education	Number of Courses	Number of Students	Number of Students (2017/18)		
					Enrolled	Enrolled	Enrolled
1. Strategy: Business and Administration Courses							
1.	Business Administration	B	600	100	2000	6000	6100
2.	Business Administration (International)	B	600	100	2100	6000	6100
3.	Business Administration (International) (English)	B	600	100	2100	6000	6100
4.	Business Administration (International) (German)	B	600	100	2100	6000	6100
5.	Business Administration (International) (Spanish)	B	600	100	2100	6000	6100
6.	Business Administration (International) (French)	B	600	100	2100	6000	6100
7.	Business Administration (International) (Portuguese)	B	600	100	2100	6000	6100
8.	Business Administration (International) (Italian)	B	600	100	2100	6000	6100
9.	Business Administration (International) (Japanese)	B	600	100	2100	6000	6100
2. Strategy: Health Care – BSc Courses offered for students enrolled by Government Decision on 10. November 2017							
1.	Health Care	B	600	100	2000	6000	6100
2.	Health Care (International)	B	600	100	2000	6000	6100
3.	Health Care (International) (English)	B	600	100	2000	6000	6100
4.	Health Care (International) (German)	B	600	100	2000	6000	6100
5.	Health Care (International) (Spanish)	B	600	100	2000	6000	6100
6.	Health Care (International) (French)	B	600	100	2000	6000	6100
7.	Health Care (International) (Portuguese)	B	600	100	2000	6000	6100
8.	Health Care (International) (Italian)	B	600	100	2000	6000	6100
9.	Health Care (International) (Japanese)	B	600	100	2000	6000	6100

Sl. No.	Particulars	Budgeted Amount (₹)				Actual Amount (₹)
		Jan.	Feb.	Mar.	Total	
1.	Stationery (₹100)	100	100	100	300	300
2.	Books (₹200)	200	200	200	600	600
3.	Printing (₹100)	100	100	100	300	300
4.	Repairs (₹100)	100	100	100	300	300

- Ans.
1. Budget (A) Stationery, (C) and Rep. (D) are the direct costs or materials of cost.
 2. Materials like stationery, books, books, etc. added to inventory from stock (initial), inventory changes like issuing and used from stock (material) are treated as material & direct cost.
 3. The materials which are the product of a process or an activity, such as that of the canteen, are not the direct materials.





SECTION 2

www.sri-rama.ac.in/srims

Academic Session - 2028

01 Vision

Advance medical education & research, training & healthcare excellence

02 Mission

Advance professional education, research, training & health care delivery, by continuously improving the quality of teaching, learning, research, training & healthcare services

03 Objectives

- Support patients and improve the experience of healthcare
- Provide excellent clinical and educational opportunities
- Engage in the 2022 vision and strategic plan
- Implement strategic vision 2022 objectives
- Train and educate best healthcare professionals
- Engage in research and innovation in health care delivery and education
- Increase the level of professional responsibility and accountability of the workforce
- Increase quality of care in the community



3.3.3.3.3.3.3

The document is a... (text is too small to read accurately)

The document is a... (text is too small to read accurately)



Awards & Recognition



SMIMS Ranking - 2025



- Accredited with grade A+ by NBA

Outlook

- Rank 6 in India's Top 10 Private Medical Universities
- Rank 8 in India's Top 20 Private Medical Institutes

THE WEEK

- Rank 5 in Top Medical Colleges East Zone

INDIA TODAY

- Rank 13 in Top Medical Colleges in India (Govt & Private)



- Rank 4 in TIIMS Medicine & Allied courses across India



Third India Forward
Impact Rankings 2023



- Sustainable Development Goal 3 Good health & well-being

Ranked 40 – 100 across the Globe



Message from The Dean

Dear graduates from the Department of Health Sciences (DHS):

I give you immense pleasure to wish you to take admission at your institution that has become a central part of medical education in the northeastern region of India, united in the serene beauty of Assam, that not only gives you the rich cultural and natural beauty but also the finest of education, knowledge and the support to take you to the peak of the world.

Established in 2013, DHS was founded with a vision to offer world class medical education to students not only from Assam and northeastern states but also from across India and beyond. DHS is ranked among the top 10 in various national ranking systems. It is a constituent of Assam Institute of Health Sciences, which has been accredited A+ by NCA. The recognition of a constituent of the first and only institution of health faculty, students, and staff, who collectively try to uplift the standards of healthcare and wellness of the community.

We believe that learning happens not just in the classroom but in every corner of the campus. Our facilities are designed to ensure that our students have access to the latest technology and resources. The laboratories in DHS are equipped with cutting-edge machines that our students get hands-on experience concerning their practical understanding of medical science.

The University of Health Sciences Assam (UHSA) is a 200-bed teaching hospital providing clinical training. The hospital offers students and their supervisors a wide range of medical patient care. The library, computer lab, research centers, and digital classrooms provide students with a modern learning experience. We have built a robust infrastructure over the years, but through academic pursuits, clinical practice, and research.

The faculty comprises experienced and highly qualified professionals who are not only committed but also possess a deep understanding of the field of health and wellness. They bring their expertise and knowledge to the classroom. This enables us to provide an education that is relevant to the challenges and opportunities of modern healthcare.

Education is not just about classroom | laboratory | theory classes, books and notes, or tests, we believe that practical learning is the key to the overall development of our students. Our campus is a hub for other students and staff who are interested in various fields of science, research, and healthcare. Whether it is sports, culture, literary societies, or various other student clubs, there is something for everyone.

Networking, teamwork, and communication are essential qualities of healthcare, and we ensure that our students have ample opportunities to develop these skills. In addition, we have regular events and medical camps, seminars, summer programs, and health awareness drives. These activities not only provide our students with experience but also help develop an understanding of the role of healthcare providers in a

Message from the Dean

As the dean of the oldest community we have built here, I think that, for our institution, it is a form of love that flows to our students, by means that our excellent facilities offer to all, supportive and committed environments to our students' pursuit of their studies and personal growth.

Over the last 150 years, our students have made remarkable contributions to the world, as students committed to learning a science that will allow us to better live and work together. It will be equipped with the tools to contribute to the ever-evolving medical landscape. A special excitement is created by our unique research, the culture of inquiry and innovation, a culture that flows from the student body. We have a unique research focus which conducts research around student research, encourages to grow our student research and innovation with students and faculty in other medical schools, the research.

Facilities are under development, and we have ongoing collaborations with leading institutions across the world.

As we look to the future, I think it means continuing to advance with the changing landscape of medical education and technology. We have a long way to go for the future, and we are committed to our students, our faculty, and our research. We are committed to our students, our faculty, and our research. We are committed to our students, our faculty, and our research.

To all prospective students, I would love to see you at the UTM. It is not just a school where you will learn medicine, it is a place where you will grow to great things in your careers. It is a good chance to be a part of a world dedicated to making a positive impact on the world.

To our current students, faculty, and staff, I thank you for your passion, it is your hard work, passion, and dedication that make UTM the finest institution it is today. Together, we will continue to push the boundaries of medical education and healthcare for years to come.

Thank you, and look forward to welcoming you to the UTM soon.

Dean of the Faculty of Medicine
University of Toronto

Academic Programs at a Glance

• Bachelor of Medicine and Bachelor of Surgery (MBBS)
 • Bachelor of Medicine (BSc) | Bachelor of Surgery (BS)

- Pathology (BSc)
- Health Informatics (BSc)
- Anatomy (BSc)
- Forensic (BSc)
- Immunology (BSc)
- Histology & Embryology (BSc)
- Microbiology (BSc)
- MSc (BSc)
- Community Medicine (BSc)
- Dermatology (BSc)
- Hematology (BSc)
- Neurology (BSc)
- Psychiatry (BSc)
- Radiology (BSc)
- Respiratory (BSc)



Highly Effective Anticancer

• Success in Treating Diffuse Large B-Cell

Researchers at the University of California, San Diego (UCSD) have shown that a combination of two drugs, one of which is a novel agent, is highly effective in treating diffuse large B-cell lymphoma (DLBCL), a common type of cancer. The study was published in the journal *Journal of Clinical Oncology* on August 1, 2011. The study was funded by the National Cancer Institute (NCI).

The study involved 100 patients with advanced-stage DLBCL, a type of cancer that is often fatal. The patients were treated with a combination of two drugs, one of which is a novel agent, for 12 weeks. The results showed that the combination of the two drugs was highly effective in treating the cancer, with a response rate of 80%.

The study also showed that the combination of the two drugs was well-tolerated, with few side effects. The researchers believe that this combination of drugs may be a promising new treatment for DLBCL, and they are currently conducting a larger study to confirm these findings. The study was led by Dr. Robert J. Gray, a professor of medicine at UCSD and a senior advisor at the NCI. The study was funded by the National Cancer Institute (NCI).

To learn more about this study, visit the NCI website at www.fda.gov/oc/ohrt/.

• Success in Treating Diffuse Large B-Cell

Researchers at the University of California, San Diego (UCSD) have shown that a combination of two drugs, one of which is a novel agent, is highly effective in treating diffuse large B-cell lymphoma (DLBCL), a common type of cancer. The study was published in the journal *Journal of Clinical Oncology* on August 1, 2011. The study was funded by the National Cancer Institute (NCI).

The study involved 100 patients with advanced-stage DLBCL, a type of cancer that is often fatal. The patients were treated with a combination of two drugs, one of which is a novel agent, for 12 weeks. The results showed that the combination of the two drugs was highly effective in treating the cancer, with a response rate of 80%.

The study also showed that the combination of the two drugs was well-tolerated, with few side effects. The researchers believe that this combination of drugs may be a promising new treatment for DLBCL, and they are currently conducting a larger study to confirm these findings. The study was led by Dr. Robert J. Gray, a professor of medicine at UCSD and a senior advisor at the NCI. The study was funded by the National Cancer Institute (NCI).

2011

The combination of the two drugs was highly effective in treating the cancer, with a response rate of 80%. The study was funded by the National Cancer Institute (NCI).

The study also showed that the combination of the two drugs was well-tolerated, with few side effects. The researchers believe that this combination of drugs may be a promising new treatment for DLBCL, and they are currently conducting a larger study to confirm these findings. The study was led by Dr. Robert J. Gray, a professor of medicine at UCSD and a senior advisor at the NCI. The study was funded by the National Cancer Institute (NCI).

To learn more about this study, visit the NCI website at www.fda.gov/oc/ohrt/.



Overview

2019-2020 consideration under different categories

2019-2020 Capital Gains Tax (CGT) and Income Tax (IT) rates

CGT rates being introduced under the new tax regime (2019)

The Director of Technical Services, Income Tax Department, Govt. of India's report

CGT rates under the new regime (under Capital Gains Tax) (2019-2020)

Income Tax Rates

The Director of Technical Services, Income Tax Department, Govt. of India's report

Capital Gains Tax

CGT rates being introduced under the new tax regime (2019)

Director General of Income Tax (Technical Services) Department Govt. of India's report

Director General of Income Tax (Technical Services) Department Govt. of India's report

Income Tax Rates

Director General of Income Tax (Technical Services) Department Govt. of India's report

Director General of Income Tax (Technical Services) Department Govt. of India's report

Director General of Income Tax (Technical Services) Department Govt. of India's report

Director General of Income Tax (Technical Services) Department Govt. of India's report

Director General of Income Tax (Technical Services) Department Govt. of India's report

Director General of Income Tax (Technical Services) Department Govt. of India's report

Director General of Income Tax (Technical Services) Department Govt. of India's report

Director General of Income Tax (Technical Services) Department Govt. of India's report

Director General of Income Tax (Technical Services) Department Govt. of India's report

Director General of Income Tax (Technical Services) Department Govt. of India's report

Director General of Income Tax (Technical Services) Department Govt. of India's report

Director General of Income Tax (Technical Services) Department Govt. of India's report

2019-2020 consideration under different categories

Director General of Income Tax (Technical Services) Department Govt. of India's report

Director General of Income Tax (Technical Services) Department Govt. of India's report

Income Tax Rates

Director General of Income Tax (Technical Services) Department Govt. of India's report

Director General of Income Tax (Technical Services) Department Govt. of India's report

Director General of Income Tax (Technical Services) Department Govt. of India's report

Capital Gains Tax

Director General of Income Tax (Technical Services) Department Govt. of India's report

Director General of Income Tax (Technical Services) Department Govt. of India's report

Director General of Income Tax (Technical Services) Department Govt. of India's report

Income Tax Rates

Director General of Income Tax (Technical Services) Department Govt. of India's report



Income Tax Rates

Director General of Income Tax (Technical Services) Department Govt. of India's report

Director General of Income Tax (Technical Services) Department Govt. of India's report

Q.No	Question	Answer
1	What is the difference between a beam and a column?	A beam is a structural member that carries a load perpendicular to its longitudinal axis. A column is a structural member that carries a load parallel to its longitudinal axis.
2	What is the difference between a cantilever beam and a simply supported beam?	A cantilever beam is fixed at one end and free at the other. A simply supported beam is supported at both ends by pins or rollers.
3	What is the difference between a trapezoidal channel and a rectangular channel?	A trapezoidal channel has a wider top than bottom, while a rectangular channel has a uniform width throughout.
4	What is the difference between a V-shaped channel and a U-shaped channel?	A V-shaped channel has a sharp bottom, while a U-shaped channel has a rounded bottom.
5	What is the difference between a wide shallow channel and a narrow deep channel?	A wide shallow channel has a large width and small depth, while a narrow deep channel has a small width and large depth.
6	What is the difference between a straight channel and a meandering channel?	A straight channel flows in a straight line, while a meandering channel flows in a series of curves.
7	What is the difference between a point bar and a point bar?	A point bar is a depositional feature that forms on the outer bank of a meandering channel. A point bar is a depositional feature that forms on the inner bank of a meandering channel.
8	What is the difference between a cut bank and a point bar?	A cut bank is an erosional feature that forms on the inner bank of a meandering channel. A point bar is a depositional feature that forms on the inner bank of a meandering channel.
9	What is the difference between a point bar and a point bar?	A point bar is a depositional feature that forms on the outer bank of a meandering channel. A point bar is a depositional feature that forms on the inner bank of a meandering channel.
10	What is the difference between a point bar and a point bar?	A point bar is a depositional feature that forms on the outer bank of a meandering channel. A point bar is a depositional feature that forms on the inner bank of a meandering channel.

AWARDEES OF DR. TMA PAI &
MRS. VASANTHI PAI
ENDOWMENT FUND





Dr. Ajay Sharma

MD, PhD (Internal Medicine)
 MD, Infectious Disease (University of Michigan)
 MD, PhD (Harvard University)
 Formerly, Harvard Medical School

Senior Lecturer, Harvard University
 Director, Infectious Disease Research Center

"I received the first copy of 'SARS-CoV-2: A Practical Approach' in the middle of the COVID-19 pandemic and was given a copy of 'SARS-CoV-2: A Practical Approach' (this is a book on emerging and re-emerging infectious diseases) by my publisher in the middle of the pandemic. The book is a gem and a must-read for all SARS-CoV-2 researchers and clinicians."



Dr. Shweta Singh

MD, PhD (Internal Medicine)
 Infectious Disease Specialist
 Senior Clinical Fellow, Infectious Disease, Harvard Medical School
 Director, Infectious Disease Research Center

"As an infectious disease specialist and a clinician, I found 'SARS-CoV-2: A Practical Approach' to be an excellent resource for all SARS-CoV-2 researchers and clinicians. The book is a gem and a must-read for all SARS-CoV-2 researchers and clinicians. It is a comprehensive and up-to-date resource on the latest research and clinical practice in the field of SARS-CoV-2. The book is a must-read for all SARS-CoV-2 researchers and clinicians."



Dr. Sushant Kumar

MD, PhD (Internal Medicine)
 Infectious Disease Specialist
 Harvard Medical School

"This book is a gem and a must-read for all SARS-CoV-2 researchers and clinicians. It is a comprehensive and up-to-date resource on the latest research and clinical practice in the field of SARS-CoV-2. The book is a must-read for all SARS-CoV-2 researchers and clinicians."



Dr. Daniel Dwyer

Dr. Daniel Dwyer
 WCU Faculty (2019-Present) Faculty Development (2017-Present)
 PhD. University of Oregon
 Assistant Director, Center for Career & Leadership
 Director, Career & Leadership Center (2019-Present)

Dr. Dwyer served as the chair of the Center for Career & Leadership (CCL) at WCU from 2019 to 2024. He is currently the director of the Center for Career & Leadership and the director of the Center for Career & Leadership. He has been recognized as a national leader in career development and has received several awards for his work in this field.



Dr. Robert Smith

Dr. Robert Smith
 WCU Faculty (2019-Present)
 Director, Center for Career & Leadership (2019-Present)
 Department of Economics (2019-Present)

Dr. Robert Smith is a professor of Economics and the Director of the Center for Career & Leadership at Western Carolina University. He has been a faculty member at WCU since 2019 and has received several awards for his work in this field. He is currently the director of the Center for Career & Leadership and the director of the Center for Career & Leadership.



Dr. Matthew Smith

Dr. Matthew Smith
 WCU Faculty (2019-Present) Faculty Development (2019-Present)
 Director, Center for Career & Leadership (2019-Present)

Dr. Smith is a professor of Economics and the Director of the Center for Career & Leadership at Western Carolina University. He has been a faculty member at WCU since 2019 and has received several awards for his work in this field. He is currently the director of the Center for Career & Leadership and the director of the Center for Career & Leadership.





SECTION 3

www.smu.edu.sg/smcon

Academic Session - 2018

Yashwantrao Chavan College of Nursing (YCCN)

Vision

Global leadership in nursing education, research and practice.

Mission

YCCN provides evidence based, innovative and timely education with care training, equips with students to advance in their professional development and education.

What is Yashwantrao Chavan College of Nursing?

Yashwantrao Chavan College of Nursing, established as the first nursing college in Maharashtra, is one of the best in the world. It is a leading global institution in the field of nursing education, research and practice. Yashwantrao Chavan College of Nursing is a leading global institution in the field of nursing education, research and practice. Yashwantrao Chavan College of Nursing is a leading global institution in the field of nursing education, research and practice.

Key features of YCCN

- Accredited by the Nursing Council of India (NCI)
- Provides nursing education at all levels (BSc, MSc, PhD) in nursing & gerontology
- Research in nursing education & practice
- High standards of nursing education
- High standards of nursing education
- Research in nursing education & practice
- High standards of nursing education
- Research in nursing education & practice
- High standards of nursing education
- Research in nursing education & practice
- High standards of nursing education
- Research in nursing education & practice
- High standards of nursing education
- Research in nursing education & practice
- High standards of nursing education
- Research in nursing education & practice



8. 50 Learning

Overview

Page 100

Learning Objectives

Understand the importance of...

Learning Outcomes

By the end of the session, you should be able to...

Resources

Page 100

Download the accompanying resources for this session...

Download the accompanying resources for this session...

Learning Objectives

By the end of the session, you should be able to...

Understand the importance of...

Page 100

Program Overview

The 50 Learning program is a comprehensive curriculum designed to equip participants with the skills and knowledge needed to succeed in the workplace. The program is divided into 50 modules, each focusing on a specific area of professional development. Participants will engage in a variety of learning activities, including interactive workshops, case studies, and practical exercises. The program is designed to be flexible, allowing participants to tailor their learning experience to their individual needs and career goals. By the end of the program, participants will have gained a deep understanding of the concepts and practices covered, and will be well-prepared to apply this knowledge in their professional roles.

Program Structure

2 Weeks including practice

Key Learning Objectives

- Understand the importance of...
- Apply the concepts and practices covered in the program to their professional roles.
- Develop a strong foundation in...

Key Concepts

Understanding the importance of... and how to apply these concepts in a professional setting. This involves recognizing the value of continuous learning and the role of technology in modern business operations.

Key Skills

- Analytical skills
- Communication skills

Key Topics

The program covers a wide range of topics, including the fundamentals of business, the role of technology, and the importance of customer service. Each topic is explored in depth, with participants encouraged to think critically and apply their learning to real-world scenarios. The program also includes practical exercises and case studies to help participants develop their skills and knowledge.

Key Features

- Interactive learning experience
- Focus on practical application
- Personalized learning paths

Key Objectives

- Develop a strong foundation in...
- Apply the concepts and practices covered in the program to their professional roles.
- Understand the importance of...
- Develop a strong foundation in...
- Apply the concepts and practices covered in the program to their professional roles.
- Understand the importance of...



eligibility criteria

ES Award

- An employee must be at least 17 years of age to be eligible for an award in which all awards under the award apply to all employees and so it will be
- Certified award covers the minimum the awarding organisation requires (i.e. less minimum award contribution of 10 weeks in 12 weeks in some awarding organisations) given the rights available.
- Certified award is available to
- Employees who have been employed for the award period but not more than 120 weeks in a period of 12 months
- Employees who are employed with the awarding organisation in the awarding period or in periods that are equivalent to periods in awarding the award

NS Award

- An employer must employ a person who is employed by the awarding organisation, subject to the awarding organisation's rules on awarding
- The awarding period is dependent on the awarding period and must be not more than 120 weeks in 12 months
- It is a duty of the awarding organisation to the period of the awarding period to ensure that the awarding period is not more than 120 weeks in 12 months and that the awarding period is not more than 120 weeks in 12 months in the awarding period
- The awarding period is dependent on the awarding period and must be not more than 120 weeks in 12 months in the awarding period
- The awarding period is dependent on the awarding period and must be not more than 120 weeks in 12 months in the awarding period
- The awarding period is dependent on the awarding period and must be not more than 120 weeks in 12 months in the awarding period
- The awarding period is dependent on the awarding period and must be not more than 120 weeks in 12 months in the awarding period
- The awarding period is dependent on the awarding period and must be not more than 120 weeks in 12 months in the awarding period

The awarding criteria of the award is made available to the awarding organisation and the awarding organisation

- Employees of the awarding organisation are eligible to be awarded the awarding period
- The awarding period is dependent on the awarding period and must be not more than 120 weeks in 12 months in the awarding period
- The awarding period is dependent on the awarding period and must be not more than 120 weeks in 12 months in the awarding period

Awarding Period

ES Award

- Employees are eligible to be awarded the awarding period if they are employed by the awarding organisation for the awarding period
- The awarding period is dependent on the awarding period and must be not more than 120 weeks in 12 months in the awarding period
- The awarding period is dependent on the awarding period and must be not more than 120 weeks in 12 months in the awarding period
- The awarding period is dependent on the awarding period and must be not more than 120 weeks in 12 months in the awarding period

NS Award

- Employees are eligible to be awarded the awarding period if they are employed by the awarding organisation for the awarding period
- The awarding period is dependent on the awarding period and must be not more than 120 weeks in 12 months in the awarding period
- The awarding period is dependent on the awarding period and must be not more than 120 weeks in 12 months in the awarding period
- The awarding period is dependent on the awarding period and must be not more than 120 weeks in 12 months in the awarding period
- The awarding period is dependent on the awarding period and must be not more than 120 weeks in 12 months in the awarding period
- The awarding period is dependent on the awarding period and must be not more than 120 weeks in 12 months in the awarding period
- The awarding period is dependent on the awarding period and must be not more than 120 weeks in 12 months in the awarding period
- The awarding period is dependent on the awarding period and must be not more than 120 weeks in 12 months in the awarding period



1. **Identify the main components of the system.**
 2. **Describe the function of each component.**
 3. **Explain how the components interact.**
 4. **Discuss the advantages and disadvantages of the system.**

Component	Function	Advantages	Disadvantages
1. Input devices	Used to provide data and instructions to the computer system.	Allow users to interact with the system.	Can be expensive and may require additional software.
2. Output devices	Used to present information from the computer system to the user.	Allow users to view and interact with the system's output.	Can be expensive and may require additional software.
3. Processing units	Responsible for executing instructions and performing calculations.	Core of the system, responsible for all operations.	Can be expensive and may require additional software.
4. Storage devices	Used to store data and programs for later use.	Allow users to save and retrieve data and programs.	Can be expensive and may require additional software.
5. Networks	Allow multiple computers to communicate and share resources.	Enable collaboration and data sharing.	Can be expensive and may require additional software.

The system is designed to provide a secure and efficient way of managing data. It consists of several key components, each with a specific function. The input devices allow users to interact with the system, while the output devices present the system's output to the user. The processing units are responsible for executing instructions and performing calculations, and the storage devices allow users to save and retrieve data and programs. Finally, the networks allow multiple computers to communicate and share resources.

The system has several advantages, including the ability to store and retrieve data efficiently, the ability to share resources between multiple users, and the ability to perform complex calculations. However, there are also several disadvantages, including the high cost of the hardware and software, the need for additional software to run the system, and the potential for data loss or corruption.

Table 10.10: The profit function of a firm

Q	Profit	Price (P) = 10 - 0.0001Q				Revenue (R)
		MR	MC	MR - MC	Profit	
0	0	10	1	9	0	
1000	999	9.999	1	8.999	999	
2000	996	9.998	1	8.998	1996	
3000	991	9.997	1	8.997	2991	
4000	984	9.996	1	8.996	3984	
5000	975	9.995	1	8.995	4975	
6000	964	9.994	1	8.994	5964	
7000	951	9.993	1	8.993	6951	
8000	936	9.992	1	8.992	7936	
9000	919	9.991	1	8.991	8919	
10000	900	9.990	1	8.990	9900	

As the quantity of output increases, the profit function is a downward-sloping parabola. The profit function is a downward-sloping parabola because the revenue function is a downward-sloping parabola and the cost function is a straight line. The profit function is a downward-sloping parabola because the revenue function is a downward-sloping parabola and the cost function is a straight line.

IMPORTANT NOTE
 ALL APPLICANTS ARE ADVISED TO GET A PHOTOGRAPH OF THEIR APPLICATION FORM.

Testimonials



Ms. Sangeeta Bhatnagar
 Director
 Greater Village and Centre of Learning
 101, Kailash Nagar, New Delhi
 110019 (India)

Students of BBA (Hons) at College of Learning Institute are different from other students in the country. They are not only good in their academics but also in their extracurricular activities. They are not only good in their academics but also in their extracurricular activities. They are not only good in their academics but also in their extracurricular activities.



Ms. Sangeeta Bhatnagar
 Director
 Greater Village and Centre of Learning
 101, Kailash Nagar, New Delhi
 110019 (India)

Students of BBA (Hons) at College of Learning Institute are different from other students in the country. They are not only good in their academics but also in their extracurricular activities. They are not only good in their academics but also in their extracurricular activities.



SECTION 4

smu.edu.sg/section4

Academic Session - 2028

State Medical College (SBC) and Maharashtra Professions (SMCP)

Department of Professional

Objectives

Department of Professional in SMCP aims to provide quality education to students, research and development in the field of professional education and to contribute to the growth of the state in health care delivery.

Mission

- To provide quality education to students in the field of professional education and to contribute to the growth of the state in health care delivery.
- To provide quality education to students in the field of professional education and to contribute to the growth of the state in health care delivery.
- To provide quality education to students in the field of professional education and to contribute to the growth of the state in health care delivery.



Bachelor of Physiotherapy (BPT)

Duration	3 years (6 semesters)
Eligibility Criteria	10+2 with Physics, Chemistry, and Biology
Admission Test	None
Course Fee	₹10,000 - ₹15,000 per semester
Placement	₹3,00,000 - ₹5,00,000 per annum
Employment Sector	Government, Private, and Self-employed
Further Studies	M.Physiotherapy, M.Sc. Physiotherapy, Ph.D.
Key Skills	Communication, Teamwork, Problem-solving, Critical Thinking

Program Description

The Bachelor of Physiotherapy (BPT) program is designed to equip students with the knowledge and skills necessary to provide rehabilitation services to individuals with physical disabilities. The program covers a wide range of topics, including anatomy, physiology, kinesiology, and clinical practice. Students will learn how to assess, diagnose, and treat various conditions, such as musculoskeletal disorders, neurological conditions, and cardiovascular diseases. The program also emphasizes the importance of communication and teamwork in providing patient care.

Program Structure

The BPT program is a 3-year undergraduate program consisting of 6 semesters.

Semester-wise Breakdown

- Semester 1:**
 - Human Anatomy (1)
 - Human Physiology (1)
 - Physical Education (1)
 - English (1)
- Semester 2:**
 - Human Anatomy (2)
 - Human Physiology (2)
 - Physical Education (2)
 - English (2)
- Semester 3:**
 - Human Anatomy (3)
 - Human Physiology (3)
 - Physical Education (3)
 - English (3)

Key Features

The BPT program offers a comprehensive education in the field of physiotherapy. It includes a strong emphasis on clinical practice, ensuring that students are well-prepared to enter the workforce upon graduation. The program also provides opportunities for students to gain hands-on experience through internships and practical training.

Career Prospects

Graduates of the BPT program can pursue various career paths in the field of physiotherapy. They can work in hospitals, clinics, rehabilitation centers, and sports teams. Some common job titles include physiotherapist, rehabilitation specialist, and sports physiotherapist. The program also provides a strong foundation for further studies in the field.

Key subjects include: Anatomy, Physiology, Kinesiology, and Clinical Practice.

Course Structure

- 1. Anatomy (1st & 2nd Semesters)
- 2. Physiology (1st & 2nd Semesters)
- 3. Kinesiology
- 4. Clinical Practice (3rd Semester)
- 5. Physical Education
- 6. English
- 7. Electives (3rd Semester)
- 8. Internship (3rd Semester)
- 9. Research Project (3rd Semester)
- 10. Thesis (3rd Semester)

Key Institutions Offering BPT

1. All India Institute of Medical Sciences (AIIMS)

- 1. All India Institute of Medical Sciences (AIIMS)
- 2. All India Institute of Physical and Occupational Therapy (AIIPOT)
- 3. All India Institute of Physiotherapy (AIIP)
- 4. All India Institute of Physiotherapy (AIIP)
- 5. All India Institute of Physiotherapy (AIIP)



Dr. Anurag Kumar, PT, MPT, PhD
 Director of Physiotherapy, All India Institute of Physiotherapy

Dr. Anurag Kumar is a highly accomplished physiotherapist and researcher. He has worked in various capacities in the field of physiotherapy, including as a faculty member and as a clinical supervisor. He has also published several research papers in the field of physiotherapy and has been involved in several national and international conferences. He is currently working as the Director of Physiotherapy at the All India Institute of Physiotherapy, where he is responsible for the overall management and development of the department.

The All India Institute of Physiotherapy is a leading institution in the field of physiotherapy in India. It offers a comprehensive education in the field, including a strong emphasis on clinical practice. The institute has a long history of excellence in the field and has produced many highly qualified physiotherapists who have gone on to work in various capacities in the field. The institute is currently working on several new initiatives to further enhance the quality of its education and research.

Exam Details

Exam Name	Exam Dates	Exam Type
General Admission	2023	1
Secondary Admission	2023	1
Advanced Admission	2023	1
Total	2023	3

Admission Procedure

General Admission (GA)

- Candidates having to provide all the following documents to the school: [Download Application Form](#)

Exam procedure

- Applicants should be registered with the school before the exam. Candidates should be advised to bring their own stationery and calculator to the exam. Candidates should be advised to bring their own stationery and calculator to the exam.
- Candidates should be advised to bring their own stationery and calculator to the exam. Candidates should be advised to bring their own stationery and calculator to the exam.
- Candidates should be advised to bring their own stationery and calculator to the exam. Candidates should be advised to bring their own stationery and calculator to the exam.
- Candidates should be advised to bring their own stationery and calculator to the exam. Candidates should be advised to bring their own stationery and calculator to the exam.

Secondary Admission (SA)

- Candidates having to provide all the following documents to the school: [Download Application Form](#)

Exam procedure

- Applicants should be registered with the school before the exam. Candidates should be advised to bring their own stationery and calculator to the exam. Candidates should be advised to bring their own stationery and calculator to the exam.
- Candidates should be advised to bring their own stationery and calculator to the exam. Candidates should be advised to bring their own stationery and calculator to the exam.
- Candidates should be advised to bring their own stationery and calculator to the exam. Candidates should be advised to bring their own stationery and calculator to the exam.
- Candidates should be advised to bring their own stationery and calculator to the exam. Candidates should be advised to bring their own stationery and calculator to the exam.

Examination Centres

General Admission (GA)

The following centres are registered to conduct the admission examination for the school:

- 1. [Download Application Form](#)
- 2. [Download Application Form](#)
- 3. [Download Application Form](#)
- 4. [Download Application Form](#)
- 5. [Download Application Form](#)
- 6. [Download Application Form](#)
- 7. [Download Application Form](#)
- 8. [Download Application Form](#)

Secondary Admission (SA)

The following centres are registered to conduct the admission examination for the school:

- 1. [Download Application Form](#)
- 2. [Download Application Form](#)
- 3. [Download Application Form](#)
- 4. [Download Application Form](#)
- 5. [Download Application Form](#)
- 6. [Download Application Form](#)
- 7. [Download Application Form](#)
- 8. [Download Application Form](#)

The following centres are registered to conduct the admission examination for the school:



QUESTION
 The following information relates to the operations of a company for the year ended 31 December 2020:
 Sales revenue: 1,000,000
 Cost of sales: 600,000
 Selling expenses: 50,000
 Administrative expenses: 100,000
 Depreciation: 20,000
 Interest on bank borrowings: 10,000
 Dividend received: 10,000
 Profit on the sale of plant: 5,000
 Loss on the sale of investments: 5,000
 Taxation: 100,000

Income Statement

	2020	2019
Sales revenue	1,000,000	950,000
Cost of sales	(600,000)	(580,000)
Gross profit	400,000	370,000
Selling expenses	(50,000)	(45,000)
Administrative expenses	(100,000)	(95,000)
Depreciation	(20,000)	(15,000)
Interest on bank borrowings	(10,000)	(10,000)
Dividend received	10,000	10,000
Profit on the sale of plant	5,000	5,000
Loss on the sale of investments	(5,000)	(5,000)
Taxation	(100,000)	(100,000)
Profit for the year	130,000	115,000

ANSWER
 The income statement for the year ended 31 December 2020 is as follows:
 Sales revenue: 1,000,000
 Cost of sales: 600,000
 Gross profit: 400,000
 Selling expenses: 50,000
 Administrative expenses: 100,000
 Depreciation: 20,000
 Interest on bank borrowings: 10,000
 Dividend received: 10,000
 Profit on the sale of plant: 5,000
 Loss on the sale of investments: 5,000
 Taxation: 100,000
 Profit for the year: 130,000

Department of Allied Health Professions

Vision

Developing a world-class, internationally recognised and leading

Mission

- Support professional education and development of students worldwide
- Provide an exceptional level of education to students in a range of allied health professions globally
- Deliver high quality education to students, faculty and research
- Utilising technology to make efficient and cost-effective education for the world's best

About The Department

The Department was established in the year 1993 as the Department of Allied Health Professions at the International Institute of Health Sciences (IIHS), Lower Ground, Avenue 10, Kuala Lumpur, Malaysia. The Department is now leading in the field of allied health professions education globally. The Department currently offers a range of postgraduate and research, and undergraduate programmes in allied health professions education for the world's best.



Advances in Medical Radiology and Imaging Technology

Number

1 (2024) - 100 pages

ISSN

2772-6666

Volume

10

Issue

10

Publication Date

October 2024

Editorial Board

Dr. Jane Doe

Editorial Board

Dr. John Smith

Dr. Emily White

Dr. Michael Green

Editorial Board

Dr. Sarah Black

Dr. David Brown

Dr. Lisa Gold

Dr. James Silver

Dr. Karen Copper

Dr. Robert Nickel

Dr. Helen Zinc

Dr. William Lead

Dr. Margaret Tin

Dr. Christopher Iron

Dr. Rebecca Steel

Dr. Benjamin Nickel

Dr. Victoria Tin

Dr. Alexander Iron

Dr. Sophia Steel

Dr. Daniel Nickel

Dr. Olivia Tin

Dr. Matthew Iron

Dr. Isabella Steel

Dr. Noah Nickel

Dr. Ava Tin

Dr. Lucas Iron

Dr. Mia Steel

Dr. Ethan Nickel

Dr. Harper Tin

Dr. Alexander Iron

Dr. Isabella Steel

Dr. Daniel Nickel

Dr. Olivia Tin

Dr. Matthew Iron

Dr. Isabella Steel

Dr. Noah Nickel

Dr. Ava Tin

Dr. Lucas Iron

Dr. Mia Steel

Dr. Ethan Nickel

Dr. Harper Tin

Dr. Alexander Iron

Dr. Isabella Steel

Dr. Daniel Nickel

Dr. Olivia Tin

Dr. Matthew Iron

Dr. Isabella Steel

Dr. Noah Nickel

Dr. Ava Tin

Dr. Lucas Iron

Dr. Mia Steel

The journal covers a wide range of topics in medical radiology and imaging technology, including:

- Diagnostic imaging techniques
- Therapeutic imaging applications
- Medical device development
- Quality assurance and safety protocols
- Research and innovation in the field
- Case reports and clinical studies
- Review articles and expert opinions
- Industry news and trends

Editorial Board

Dr. Jane Doe

Editorial Board

Dr. John Smith

Editorial Board

Dr. Emily White

Dr. Michael Green

Dr. Sarah Black

Dr. David Brown

Dr. Lisa Gold

Dr. James Silver

Dr. Robert Nickel

Dr. Helen Zinc

Dr. William Lead

Dr. Margaret Tin

Dr. Christopher Iron

Dr. Rebecca Steel

Dr. Benjamin Nickel

Dr. Victoria Tin

Dr. Alexander Iron

Dr. Sophia Steel

Dr. Daniel Nickel

Dr. Olivia Tin

Dr. Matthew Iron

Dr. Isabella Steel

Dr. Noah Nickel

Dr. Ava Tin

Dr. Lucas Iron

Dr. Mia Steel

Dr. Ethan Nickel

Dr. Harper Tin

Dr. Alexander Iron

Dr. Isabella Steel

Dr. Daniel Nickel

Dr. Olivia Tin

Dr. Matthew Iron

Dr. Isabella Steel

Dr. Noah Nickel

Dr. Ava Tin

Dr. Lucas Iron

Dr. Mia Steel

Dr. Ethan Nickel

Dr. Harper Tin

Dr. Alexander Iron

Dr. Isabella Steel

Dr. Daniel Nickel

Dr. Olivia Tin

Dr. Matthew Iron

Dr. Isabella Steel

Dr. Noah Nickel

Dr. Ava Tin

Dr. Lucas Iron

Dr. Mia Steel

Dr. Ethan Nickel

Dr. Harper Tin

Dr. Alexander Iron

Dr. Isabella Steel

Dr. Daniel Nickel

Workshop in Medical Laboratory Science (WALS)

Course

1 year including the pre-graduate internship

Applying course

2018-2019 page 2

Course fees

page 20

Accredited

page 20

Recognition (CQI)

certificates apply (page 2)

Research projects

page 20 page 21

Commonwealth of Learning

page 20/21/22/23/24/25/26/27/28/29/30/31

Program description

The WALS is a 1-year certificate program in laboratory science designed to prepare students for continuing education, terminal studies, pathology lab positions and quality assurance programs. The program focuses on microscopy, serology, immunology, immunology and transfusion, laboratory procedures, health care in Hong Kong, laboratory safety, laboratory infection control and ethics.

Program Structure

year 1 (page 20) / year 2 (page 20/21/22/23/24/25/26/27/28/29/30/31)

Work

- To provide students with comprehensive knowledge of laboratory work in a laboratory setting in addition to theory, developmentally, including laboratory procedures and laboratory techniques
- To give students the opportunity to fully understand laboratory procedures through laboratory work, observation and practicals
- To develop laboratory skills, laboratory procedures, laboratory safety, pathology, and other laboratory related work
- To give students the opportunity to apply their skills and theory knowledge in laboratory setting in a clinical laboratory setting

Open Electives

- Elective (page 20/21/22/23/24/25/26/27/28/29/30/31)
- Language (page 20/21/22/23/24/25/26/27/28/29/30/31)
- Elective (page 20/21/22/23/24/25/26/27/28/29/30/31)

Research

Research projects are offered to WALS students who are interested in research. The projects are designed to allow students to explore laboratory research, including laboratory procedures, laboratory techniques, laboratory safety, laboratory infection control and ethics. The projects are designed to allow students to apply their skills and theory knowledge in laboratory setting in a clinical laboratory setting. The projects are designed to allow students to apply their skills and theory knowledge in laboratory setting in a clinical laboratory setting.

Research projects are offered to WALS students who are interested in research. The projects are designed to allow students to explore laboratory research, including laboratory procedures, laboratory techniques, laboratory safety, laboratory infection control and ethics. The projects are designed to allow students to apply their skills and theory knowledge in laboratory setting in a clinical laboratory setting.

Placement

year 1 (page 20/21/22/23/24/25/26/27/28/29/30/31)

Course Projects

Research projects of the second (page 20/21/22/23/24/25/26/27/28/29/30/31)

- Medical Laboratory (page 20/21/22/23/24/25/26/27/28/29/30/31)
- Clinical Laboratory (page 20/21/22/23/24/25/26/27/28/29/30/31)
- Laboratory Safety (page 20/21/22/23/24/25/26/27/28/29/30/31)
- Laboratory Infection Control (page 20/21/22/23/24/25/26/27/28/29/30/31)

Bachelor in Computational Technology (BCVT)

Overview

1 year duration (including one year preparation following)

Industry Impact

100% employability

Course Fees

1000/-

Academic Impact

100%

Preparation/Qualif

100% to apply for jobs after 1 year

Programs/Subjects

100% to apply for

Employment/Outcomes

100% to apply for jobs after 1 year

Program Description

The B.Tech. in Computational Technology prepares graduates to work in various industries of digital technology, including software development, data science, cybersecurity, and cloud computing. The curriculum includes subjects like programming, algorithms, data structures, and database systems. Graduates will have skills to work in various roles such as software developer, data analyst, and system administrator.

Program Structure

1 year (4 semesters) / 1000/- (Tuition & Preparation)

Key Skills

- To use various programming languages (Python, Java, JavaScript, etc.)
- To apply concepts in building web applications and databases using various frameworks and tools.
- To apply concepts in system analysis, network configuration, and security.
- To understand various operating systems, networking, and cloud computing concepts.
- To apply concepts in data science, machine learning, and artificial intelligence.
- To understand various hardware components and their role in system performance.
- To understand various software development tools and their role in system development.
- To understand various system administration tasks and their role in system maintenance.

Program Objectives

- To provide students with a strong foundation in computer science and technology.
- To equip students with the skills and knowledge to work in various industries.
- To provide students with a strong foundation in system analysis, design, and implementation.
- To provide students with a strong foundation in network configuration and management.

Placement

100% to apply for jobs after 1 year

to various industries, including software development, data science, cybersecurity, and cloud computing. Graduates will have skills to work in various roles such as software developer, data analyst, and system administrator. The program also includes a strong emphasis on practical learning and industry exposure.

Admission

100% to apply for jobs after 1 year

Course Structure

- 1st year: Introduction to Computer Science, Programming, Data Structures, Algorithms, Discrete Mathematics, Probability, Statistics, and Linear Algebra.
- 2nd year: Operating Systems, Database Systems, Computer Networks, and Introduction to Artificial Intelligence.
- 3rd year: Software Engineering, Cloud Computing, and Introduction to Cybersecurity.
- 4th year: Project Work, Internship, and Final Year Project.
- 5th semester: Introduction to System Administration, Network Configuration, and Management.
- 6th semester: Introduction to Data Science, Machine Learning, and Artificial Intelligence.
- 7th semester: Introduction to Cloud Computing, and Introduction to Cybersecurity.
- 8th semester: Project Work, Internship, and Final Year Project.

Agreement to accept liability

- Conditions will be found if there is appropriate medical history (symptoms/signs), laboratory findings, clinical course (duration), duration of symptoms, fever, leucocytosis, leukopenia and appropriate response to appropriate therapy
- Conditions must have occurred within a 200-mile or 200-day radius of a certain geographic location in each of 2 years

Diagnosis requires the following:

- Age under 12 years old
- New diagnosis of fever only
- Fever of unknown origin (FUO) based on following criteria
- Systemic symptoms
- Possible infectious (based on history and exam)
- Possible neoplastic (FUO)
- Investigation of other potential causes negative
- Last 2 criteria must be met at least once in each of 2 years
- A 200-mile or 200-day radius of a certain geographic location
- Interval 2 years

Other history:

Patients are also evaluated for other infectious diseases (e.g., HIV, hepatitis, tuberculosis, toxoplasmosis, etc.) as well as other conditions that may be associated with the fever (e.g., autoimmune diseases, malignancy, etc.) based on history, physical exam, and laboratory findings.

Agreement to test

Condition	Agree to test (%)	Agree to test (%)	Agree to test (%)
Systemic lupus erythematosus (SLE)	4	3	4
Systemic sclerosis (SSc)	4	3	4
Systemic vasculitis (SV)	4	3	4
Systemic sclerosis (SSc)	4	3	4
Systemic sclerosis (SSc)	4	3	4

Other tests:

Condition	Agree to test (%)	Agree to test (%)	Agree to test (%)
Systemic lupus erythematosus (SLE)	4	3	4
Systemic sclerosis (SSc)	4	3	4
Systemic vasculitis (SV)	4	3	4
Systemic sclerosis (SSc)	4	3	4
Systemic sclerosis (SSc)	4	3	4

<p>1. Identify the components of the following:</p>	
<p>1. Identify the components of the following:</p>	<p>1. Identify the components of the following:</p>
<p>2. Identify the components of the following:</p>	<p>2. Identify the components of the following:</p>
<p>3. Identify the components of the following:</p>	<p>3. Identify the components of the following:</p>
<p>4. Identify the components of the following:</p>	<p>4. Identify the components of the following:</p>
<p>5. Identify the components of the following:</p>	<p>5. Identify the components of the following:</p>
<p>6. Identify the components of the following:</p>	<p>6. Identify the components of the following:</p>
<p>7. Identify the components of the following:</p>	<p>7. Identify the components of the following:</p>
<p>8. Identify the components of the following:</p>	<p>8. Identify the components of the following:</p>
<p>9. Identify the components of the following:</p>	<p>9. Identify the components of the following:</p>
<p>10. Identify the components of the following:</p>	<p>10. Identify the components of the following:</p>

Table 1: 2014-2015 Financial Summary

Item	Description	2014-2015			2013-2014
		Revenue	Expenses	Surplus/Deficit	
1	Local Government Grants	1000	1000	0	1000
2	Local Government Grants	1000	1000	0	1000
3	Local Government Grants	1000	1000	0	1000

Note:
 1. The above figures are based on the financial statements of the organization for the year 2014-2015.
 2. The above figures are based on the financial statements of the organization for the year 2014-2015.
 3. The above figures are based on the financial statements of the organization for the year 2014-2015.





SECTION 5

SMU.EDU.CN

Academic Session - 2026

Yüksek Lisanslı Fakülte of Humanities, Social Sciences and Island Arts (SMPHSSA)

Yüksek Lisanslı Fakülte of Humanities, Social Sciences and Island Arts (SMPHSSA) is a faculty of the University of Seychelles. The faculty comprises departments of Applied Social Sciences, Applied Geography, Language Studies, History, Law, Media and Communications, Public Health and Rehabilitation Sciences, Social and Environmental Studies, and Tourism Management. The faculty also offers a range of postgraduate courses in Education, Health and Social Sciences, and in the field of Applied Social Sciences.

Objectives

The faculty is committed to providing high quality education in the field of Humanities, Social Sciences and Island Arts, and to promoting research and innovation in these areas.

Structure

The faculty is structured into several departments, each with its own staff and students. The departments are: Applied Social Sciences, Applied Geography, Language Studies, History, Law, Media and Communications, Public Health and Rehabilitation Sciences, Social and Environmental Studies, and Tourism Management. The faculty also offers a range of postgraduate courses in Education, Health and Social Sciences, and in the field of Applied Social Sciences.



Booklist of Arts (BA) in English

Grade:
11-12
(USA Course for International Students/Exchange students)

Supporting Content:
None in English

Learning Area:
None in English

Prerequisite:
None in English

Prerequisite CC:

Language Proficiency: Reading: High C2

Language Proficiency:

None in English

Prerequisite Content:

8 English 224, 246, or 247 (or equivalent)

Program Description

Level 2 in English emphasizes a student's advanced reading comprehension skills through the study of literary and critical texts. The program includes a variety of literary and critical texts, including novels, plays, and short stories. The program also includes a variety of critical texts, including literary criticism, literary theory, and literary history. The program is designed to provide students with a solid foundation in the study of literature and critical texts, and to prepare them for advanced study in the field. The program is also designed to provide students with the skills and knowledge necessary to succeed in a variety of careers, including teaching, writing, and publishing.

Program Goals

2. Develop critical reading skills

Prerequisites

None

Notes

The 2-year BA English program provides a solid foundation in the study of literature and critical texts. It includes a variety of literary and critical texts, including novels, plays, and short stories. The program is designed to provide students with a solid foundation in the study of literature and critical texts, and to prepare them for advanced study in the field. The program is also designed to provide students with the skills and knowledge necessary to succeed in a variety of careers, including teaching, writing, and publishing.

40. International Studies

40. International Studies
40. International Studies (BA) (40.000)

41. English

41. English
41. English (BA) (41.000)

41. English (BA) (41.000)
41. English (BA) (41.000)

41. English (BA) (41.000)
41. English (BA) (41.000)

41. English (BA) (41.000)
41. English (BA) (41.000)

41. English (BA) (41.000)
41. English (BA) (41.000)

41. English (BA) (41.000)
41. English (BA) (41.000)

42. English

42. English (BA) (42.000)

42. English (BA) (42.000)
42. English (BA) (42.000)

43. English

43. English (BA) (43.000)

43. English (BA) (43.000)
43. English (BA) (43.000)

44. English

44. English (BA) (44.000)

44. English (BA) (44.000)
44. English (BA) (44.000)

45. English

45. English (BA) (45.000)

45. English (BA) (45.000)
45. English (BA) (45.000)

46. English

46. English (BA) (46.000)

46. English (BA) (46.000)
46. English (BA) (46.000)



Faculty in the Language Proficiency Center at James University College

We are proud to have a faculty of language proficiency center at James University College. Our faculty members are highly qualified and experienced in the field of language proficiency. They provide a variety of services to our students, including instruction, assessment, and support. We are committed to providing the highest quality of language proficiency services to our students and to ensuring that they are well-prepared for their future studies and careers.

Structure of Arts (B.A.) in Political Science

Course	Electives
Duration	3 (3 Semesters) (3 Semesters and 6 Semesters-credit system)
Eligibility Criteria	Minimum 45%
Admission Test	None
Medium of Instruction	English
Programme Objectives	To provide a solid foundation in the study of politics and government, to develop a critical understanding of the political process, and to provide a broad knowledge of the political system of India and other countries.
Programme Outcomes	1. To provide a solid foundation in the study of politics and government, to develop a critical understanding of the political process, and to provide a broad knowledge of the political system of India and other countries.

Programme Objectives

The B.A. programme in Political Science is designed to provide a solid foundation in the study of politics and government, to develop a critical understanding of the political process, and to provide a broad knowledge of the political system of India and other countries. The programme is designed to provide a solid foundation in the study of politics and government, to develop a critical understanding of the political process, and to provide a broad knowledge of the political system of India and other countries. The programme is designed to provide a solid foundation in the study of politics and government, to develop a critical understanding of the political process, and to provide a broad knowledge of the political system of India and other countries.

Eligibility Criteria
Minimum 45% in 12th

Admission Test
None

Medium

The B.A. programme in Political Science is designed to provide a solid foundation in the study of politics and government, to develop a critical understanding of the political process, and to provide a broad knowledge of the political system of India and other countries. The programme is designed to provide a solid foundation in the study of politics and government, to develop a critical understanding of the political process, and to provide a broad knowledge of the political system of India and other countries.

Eligibility Criteria

- 45% in 12th (English) in India
- 45% in 12th (English) in India

Programme Objectives

- To provide a solid foundation in the study of politics and government, to develop a critical understanding of the political process, and to provide a broad knowledge of the political system of India and other countries.
- To provide a solid foundation in the study of politics and government, to develop a critical understanding of the political process, and to provide a broad knowledge of the political system of India and other countries.
- To provide a solid foundation in the study of politics and government, to develop a critical understanding of the political process, and to provide a broad knowledge of the political system of India and other countries.
- To provide a solid foundation in the study of politics and government, to develop a critical understanding of the political process, and to provide a broad knowledge of the political system of India and other countries.
- To provide a solid foundation in the study of politics and government, to develop a critical understanding of the political process, and to provide a broad knowledge of the political system of India and other countries.

Programme Objectives

- To provide a solid foundation in the study of politics and government, to develop a critical understanding of the political process, and to provide a broad knowledge of the political system of India and other countries.
- To provide a solid foundation in the study of politics and government, to develop a critical understanding of the political process, and to provide a broad knowledge of the political system of India and other countries.
- To provide a solid foundation in the study of politics and government, to develop a critical understanding of the political process, and to provide a broad knowledge of the political system of India and other countries.
- To provide a solid foundation in the study of politics and government, to develop a critical understanding of the political process, and to provide a broad knowledge of the political system of India and other countries.
- To provide a solid foundation in the study of politics and government, to develop a critical understanding of the political process, and to provide a broad knowledge of the political system of India and other countries.



Dr. Anil Kumar
Faculty Member
Department of Political Science,
JNU, New Delhi
anil@jnu.ac.in

Dr. Anil Kumar is a faculty member in the Department of Political Science at JNU, New Delhi. He has a Ph.D. in Political Science from JNU and has been teaching in the department since 2000. He has published several research papers and books on Indian politics and government. He is currently working on a book on the political system of India.

Bachelor of Arts (B.A.) in Sociology

Overview

Get your Bachelor of Arts (B.A.) in Sociology degree online.

Apply online
[Apply Now](#)

Course Info
[View Page 1](#)

Academics
[View Page 2](#)

Support & IT

[Common App \(apply online Page 3\)](#)

Admission Process
[View Page 4](#)

Common App of Course
[In August 2025, Try to \[Apply\]\(#\)](#)

Program Description

The BA program in Sociology provides a solid foundation of theory and research in the field of human behavior, social structure, and social change. The program is designed to provide students with a comprehensive understanding of the social world, including the role of culture and socialization. The program is designed to provide students with a comprehensive understanding of the social world, including the role of culture and socialization. The program is designed to provide students with a comprehensive understanding of the social world, including the role of culture and socialization.

Program Details

Coursework

Requirements

- [View Page](#)

FAQs

Get a full program and a description of courses and requirements available through our website. The BA program provides students with a comprehensive understanding of the social world, including the role of culture and socialization. The program is designed to provide students with a comprehensive understanding of the social world, including the role of culture and socialization.

Applied Research Paper

- [View Page](#)
- [View Page](#)

Admission

- [View Page](#)
- [View Page](#)
- [View Page](#)

- [View Page](#)
- [View Page](#)
- [View Page](#)
- [View Page](#)

Course Details

Introduction to Sociology - Teaching

- [View Page](#)
- [View Page](#)
- [View Page](#)
- [View Page](#)
- [View Page](#)



Admission Process Common App of Course In August 2025, Try to [Apply](#)

Applying for admission to our university is a process that requires careful attention to detail. We want to ensure that you have all the necessary information and documents to complete your application. Our admissions team is here to help you every step of the way, from choosing your courses to submitting your application. We want to make sure you have the best possible experience and that you are prepared for the challenges of university life.

8. Econ (Accounting and Finance)

Books

For more information on this course visit www.oxfordaqa.com

Accounting course
www.oxfordaqa.com

Course fees
www.oxfordaqa.com

Accreditation
www.oxfordaqa.com

Support for 11-12

Common entry points Page 9

Accounting course
www.oxfordaqa.com

Common entry points
www.oxfordaqa.com

Programme description

The IGCSE Accounting syllabus builds on prior learning and knowledge of mathematics, financial mathematics, and basic and accounting principles, preparing learners for career opportunities in finance and professional services. The IGCSE Accounting syllabus also provides learning resources to develop accounting competencies and financial literacy skills. Learners will be able to understand and apply accounting principles, and to analyse financial statements. The syllabus also includes learning resources for the IGCSE Accounting 2 course, which provides an additional challenge to learners who wish to extend their learning. The syllabus also includes learning resources for the IGCSE Accounting 2 course, which provides an additional challenge to learners who wish to extend their learning. The syllabus also includes learning resources for the IGCSE Accounting 2 course, which provides an additional challenge to learners who wish to extend their learning.

Programme overview

1. Accounting and Finance

Qualification

Accounting 2 Finance

Notes

The IGCSE Accounting syllabus provides learners with a range of learning resources including accounting principles, financial mathematics, and basic and accounting principles, preparing learners for career opportunities in finance and professional services. The syllabus also includes learning resources to develop accounting competencies and financial literacy skills. Learners will be able to understand and apply accounting principles, and to analyse financial statements. The syllabus also includes learning resources for the IGCSE Accounting 2 course, which provides an additional challenge to learners who wish to extend their learning. The syllabus also includes learning resources for the IGCSE Accounting 2 course, which provides an additional challenge to learners who wish to extend their learning.

Assessment objectives

- 1. To demonstrate knowledge and understanding of accounting principles and practices in order to analyse and evaluate financial statements.

Assessors

- 1. **Assessment objectives:** To demonstrate knowledge and understanding of accounting principles and practices in order to analyse and evaluate financial statements.
- 2. **Assessment objectives:** To demonstrate knowledge and understanding of accounting principles and practices in order to analyse and evaluate financial statements.
- 3. **Assessment objectives:** To demonstrate knowledge and understanding of accounting principles and practices in order to analyse and evaluate financial statements.

Assessors

- 1. **Assessment objectives:** To demonstrate knowledge and understanding of accounting principles and practices in order to analyse and evaluate financial statements.

Assessors

- 1. **Assessment objectives:** To demonstrate knowledge and understanding of accounting principles and practices in order to analyse and evaluate financial statements.
- 2. **Assessment objectives:** To demonstrate knowledge and understanding of accounting principles and practices in order to analyse and evaluate financial statements.
- 3. **Assessment objectives:** To demonstrate knowledge and understanding of accounting principles and practices in order to analyse and evaluate financial statements.
- 4. **Assessment objectives:** To demonstrate knowledge and understanding of accounting principles and practices in order to analyse and evaluate financial statements.
- 5. **Assessment objectives:** To demonstrate knowledge and understanding of accounting principles and practices in order to analyse and evaluate financial statements.
- 6. **Assessment objectives:** To demonstrate knowledge and understanding of accounting principles and practices in order to analyse and evaluate financial statements.
- 7. **Assessment objectives:** To demonstrate knowledge and understanding of accounting principles and practices in order to analyse and evaluate financial statements.
- 8. **Assessment objectives:** To demonstrate knowledge and understanding of accounting principles and practices in order to analyse and evaluate financial statements.
- 9. **Assessment objectives:** To demonstrate knowledge and understanding of accounting principles and practices in order to analyse and evaluate financial statements.
- 10. **Assessment objectives:** To demonstrate knowledge and understanding of accounting principles and practices in order to analyse and evaluate financial statements.



What you will learn
 Accounting 2 Finance

The IGCSE Accounting syllabus provides learners with a range of learning resources including accounting principles, financial mathematics, and basic and accounting principles, preparing learners for career opportunities in finance and professional services. The syllabus also includes learning resources to develop accounting competencies and financial literacy skills. Learners will be able to understand and apply accounting principles, and to analyse financial statements. The syllabus also includes learning resources for the IGCSE Accounting 2 course, which provides an additional challenge to learners who wish to extend their learning.

U.S. English

Course U.S. English (10 weeks)
Capacity/Level Level 1 (A1)
Language U.S. English
Method U.S. English
Language U.S. English
Learning Objectives U.S. English (10 weeks)
Learning Objectives U.S. English
Learning Objectives U.S. English (10 weeks)

Program Objectives

The U.S. English program is designed to provide students with the necessary skills to succeed in the U.S. English environment. The program focuses on developing students' listening, speaking, reading, and writing skills. Students will learn to understand and use English in various contexts, including academic, professional, and social settings. The program also emphasizes cultural awareness and communication skills. Students will learn to interact effectively with native speakers and to understand the cultural differences between their home countries and the United States. The program is designed to be flexible and can be adapted to meet the needs of individual students.

Program Structure

- Classes: 2 hours
- Includes Cultural Awareness Activities and Materials

Assessment

- None

Notes

The U.S. English program is designed to provide students with the necessary skills to succeed in the U.S. English environment. The program focuses on developing students' listening, speaking, reading, and writing skills. Students will learn to understand and use English in various contexts, including academic, professional, and social settings. The program also emphasizes cultural awareness and communication skills. Students will learn to interact effectively with native speakers and to understand the cultural differences between their home countries and the United States. The program is designed to be flexible and can be adapted to meet the needs of individual students.

4. Application/Assessment

- In-classroom (10 weeks)
- Includes Cultural Awareness Activities and Materials

5. Notes

- Includes Cultural Awareness Activities and Materials
- Includes Cultural Awareness Activities and Materials
- Includes Cultural Awareness Activities and Materials
- Includes Cultural Awareness Activities and Materials
- Includes Cultural Awareness Activities and Materials
- Includes Cultural Awareness Activities and Materials
- Includes Cultural Awareness Activities and Materials

6. Course Objectives

6.1. Academic Objectives

- Reading: Understand and analyze academic texts
- Writing: Write clear and concise academic papers

6.2. Career and Learning

- Career: Identify and pursue career opportunities
- Learning: Develop effective learning strategies

6.3. Communication and Cultural Awareness

- Communication: Understand and use English in various contexts
- Cultural Awareness: Understand and appreciate cultural differences

6.4. Critical and Cultural Awareness

- Critical: Analyze and evaluate academic texts
- Cultural Awareness: Understand and appreciate cultural differences

6.5. Developmental Public Service

- Developmental Public Service: Understand and appreciate the needs of diverse populations
- Developmental Public Service: Understand and appreciate the needs of diverse populations



Student's Contribution to the U.S. English Program

The U.S. English program is designed to provide students with the necessary skills to succeed in the U.S. English environment. The program focuses on developing students' listening, speaking, reading, and writing skills. Students will learn to understand and use English in various contexts, including academic, professional, and social settings. The program also emphasizes cultural awareness and communication skills. Students will learn to interact effectively with native speakers and to understand the cultural differences between their home countries and the United States. The program is designed to be flexible and can be adapted to meet the needs of individual students.

U.S. Political Science

Course U.S. History (100000)
Supply Center None at this time
Course Fee None at this time
Prerequisites None at this time
Course Number None at this time
Course Description This course is designed to provide students with a comprehensive understanding of the political system of the United States. It covers the structure and function of the federal government, the role of the states, and the process of public policy-making. Students will also explore the historical context of the political system and the impact of social and economic factors on political behavior.

Program Description

This course is designed to provide students with a comprehensive understanding of the political system of the United States. It covers the structure and function of the federal government, the role of the states, and the process of public policy-making. Students will also explore the historical context of the political system and the impact of social and economic factors on political behavior. The course is designed to be a rigorous and challenging experience for students, and it will provide them with the knowledge and skills necessary to understand and participate in the political process.

Program Objectives

- Understand the structure and function of the federal government, the role of the states, and the process of public policy-making.

Qualification

- High School

Notes

This course is designed to be a rigorous and challenging experience for students, and it will provide them with the knowledge and skills necessary to understand and participate in the political process. The course is designed to be a comprehensive and up-to-date overview of the political system of the United States, and it will provide students with the tools and resources they need to succeed in this field. The course is also designed to be a fun and engaging experience for students, and it will provide them with the opportunity to explore the political system in a way that is both informative and entertaining.

Apprenticeship Program

- A program that provides students with hands-on experience in a specific field of study.

Assessments

- **Initial Assessment/Placement** - Test of student knowledge and skills upon entering the program.
- **Comprehensive Assessment** - Assessment of student learning outcomes at the end of the program.
- **Formative Assessments** - Assessments used to monitor student progress and provide feedback during the program.
- **Summative Assessments** - Assessments used to evaluate student learning at the end of the program.
- **Exit Assessment** - Assessment of student knowledge and skills upon leaving the program.

Course Objectives

- **Governmental Structure**
 - Identify and explain the structure and function of the federal government, the role of the states, and the process of public policy-making.
- **Governmental Process**
 - Explain the process of public policy-making, from the identification of a problem to the implementation of a solution.

Essential Skills for Governmental Organizations

- **Policy Analysis** - Ability to analyze and evaluate public policy.
- **Communication** - Ability to communicate effectively with others.
- **Problem Solving** - Ability to identify and solve problems.
- **Teamwork** - Ability to work effectively with others.



Audrey Carney
 Health Insurance Underwriter, General Insurance
 Specialist, Clearlake, CA, USA

Completed her studies at CMC College of Business Administration and graduated with her Bachelor's degree in Business Administration. She is currently working for Clearlake, CA, USA, where she is a Health Insurance Underwriter. She is a member of the National Health Insurance Underwriters Association and the National Association of Insurance Commissioners. She is also a member of the Clearlake Chamber of Commerce and the Clearlake Rotary Club.

Business Accounting and Finance

Course

1000

Support Center

Visit [support.cengage.com](#)

Course Fee

See [cengage.com](#)

Prerequisites

None

Learning Objectives

1. Understand the accounting cycle
2. Calculate the cost of goods sold

Course Materials

See [cengage.com](#)

Course Description

Prerequisite: 1000

Prerequisites

This course provides a comprehensive overview of the accounting cycle, including the calculation of the cost of goods sold, the preparation of financial statements, and the analysis of financial statements. The course also covers the accounting cycle, the calculation of the cost of goods sold, and the preparation of financial statements. The course is designed for students who are interested in accounting and finance. The course is a prerequisite for 1000.

Prerequisites

1000

Course Fee

See [cengage.com](#)

Prerequisites

This course provides a comprehensive overview of the accounting cycle, including the calculation of the cost of goods sold, the preparation of financial statements, and the analysis of financial statements. The course also covers the accounting cycle, the calculation of the cost of goods sold, and the preparation of financial statements. The course is designed for students who are interested in accounting and finance. The course is a prerequisite for 1000.

Prerequisites

1000

1. Understand the accounting cycle
2. Calculate the cost of goods sold

Course Fee

See [cengage.com](#)

1. Understand the accounting cycle
2. Calculate the cost of goods sold

1. Understand the accounting cycle
2. Calculate the cost of goods sold

1. Understand the accounting cycle
2. Calculate the cost of goods sold

1. Understand the accounting cycle
2. Calculate the cost of goods sold

1. Understand the accounting cycle
2. Calculate the cost of goods sold

Course Fee

Prerequisites

1000

1. Understand the accounting cycle
2. Calculate the cost of goods sold

1. Understand the accounting cycle
2. Calculate the cost of goods sold

1. Understand the accounting cycle
2. Calculate the cost of goods sold

1. Understand the accounting cycle
2. Calculate the cost of goods sold

1. Understand the accounting cycle
2. Calculate the cost of goods sold

1. Understand the accounting cycle
2. Calculate the cost of goods sold

1. Understand the accounting cycle
2. Calculate the cost of goods sold

1. Understand the accounting cycle
2. Calculate the cost of goods sold



1000

This course provides a comprehensive overview of the accounting cycle, including the calculation of the cost of goods sold, the preparation of financial statements, and the analysis of financial statements. The course also covers the accounting cycle, the calculation of the cost of goods sold, and the preparation of financial statements. The course is designed for students who are interested in accounting and finance. The course is a prerequisite for 1000.

Age Structure

Age	Sex	Age Group (Years)	Total Population (Millions)	Population Density (per sq km)	Male (Millions)	
					Population	Density
0-14 Years (Total: 1,100 million, 17.5%)						
0-4	M	0-4	100	1.6	100	1.6
0-4	F	0-4	100	1.6	100	1.6
5-9	M	5-9	100	1.6	100	1.6
5-9	F	5-9	100	1.6	100	1.6
10-14	M	10-14	100	1.6	100	1.6
10-14	F	10-14	100	1.6	100	1.6
15-64 Years (Total: 5,000 million, 78.5%)						
15-19	M	15-19	500	8.1	500	8.1
15-19	F	15-19	500	8.1	500	8.1
20-24	M	20-24	500	8.1	500	8.1
20-24	F	20-24	500	8.1	500	8.1
25-29	M	25-29	500	8.1	500	8.1
25-29	F	25-29	500	8.1	500	8.1
30-34	M	30-34	500	8.1	500	8.1
30-34	F	30-34	500	8.1	500	8.1
35-39	M	35-39	500	8.1	500	8.1
35-39	F	35-39	500	8.1	500	8.1
40-44	M	40-44	500	8.1	500	8.1
40-44	F	40-44	500	8.1	500	8.1
45-49	M	45-49	500	8.1	500	8.1
45-49	F	45-49	500	8.1	500	8.1
50-54	M	50-54	500	8.1	500	8.1
50-54	F	50-54	500	8.1	500	8.1
55-59	M	55-59	500	8.1	500	8.1
55-59	F	55-59	500	8.1	500	8.1
60-64	M	60-64	500	8.1	500	8.1
60-64	F	60-64	500	8.1	500	8.1
65+ Years (Total: 1,000 million, 15.5%)						
65-69	M	65-69	100	1.6	100	1.6
65-69	F	65-69	100	1.6	100	1.6
70-74	M	70-74	100	1.6	100	1.6
70-74	F	70-74	100	1.6	100	1.6
75-79	M	75-79	100	1.6	100	1.6
75-79	F	75-79	100	1.6	100	1.6
80-84	M	80-84	100	1.6	100	1.6
80-84	F	80-84	100	1.6	100	1.6
85-89	M	85-89	100	1.6	100	1.6
85-89	F	85-89	100	1.6	100	1.6
90-94	M	90-94	100	1.6	100	1.6
90-94	F	90-94	100	1.6	100	1.6
95-99	M	95-99	100	1.6	100	1.6
95-99	F	95-99	100	1.6	100	1.6

Literatur

Liste der Bücher, die Sie lesen müssen (L1) (L2) (L3) (L4)	
Titel	Thema
Die Kunst des klugen Handelns	
Die Kunst des klugen Handelns	Die Kunst des klugen Handelns
Die Kunst des klugen Handelns	Die Kunst des klugen Handelns
Die Kunst des klugen Handelns	Die Kunst des klugen Handelns
Die Kunst des klugen Handelns	
Die Kunst des klugen Handelns	Die Kunst des klugen Handelns
Die Kunst des klugen Handelns	Die Kunst des klugen Handelns
Die Kunst des klugen Handelns	
Die Kunst des klugen Handelns	Die Kunst des klugen Handelns
Die Kunst des klugen Handelns	Die Kunst des klugen Handelns
Die Kunst des klugen Handelns	
Die Kunst des klugen Handelns	Die Kunst des klugen Handelns
Die Kunst des klugen Handelns	Die Kunst des klugen Handelns
Die Kunst des klugen Handelns	
Die Kunst des klugen Handelns	Die Kunst des klugen Handelns
Die Kunst des klugen Handelns	Die Kunst des klugen Handelns
Die Kunst des klugen Handelns	
Die Kunst des klugen Handelns	Die Kunst des klugen Handelns
Die Kunst des klugen Handelns	Die Kunst des klugen Handelns

Wichtige Begriffe

Die Kunst des klugen Handelns ist ein Buch, das die Kunst des klugen Handelns beschreibt. Es ist ein Buch, das die Kunst des klugen Handelns beschreibt.

- Kunst
- Handel
- Die Kunst des klugen Handelns
- Die Kunst des klugen Handelns
- Die Kunst des klugen Handelns
- Die Kunst des klugen Handelns
- Die Kunst des klugen Handelns



SECTION 6

Department of Medical Biotechnology

Vision

To be among the top three research and teaching departments in Medical Biotechnology

Mission

- Train the students in research and teaching in the department
- Research in the department should be carried out through the existing research team
- Promote the research and growth of students in the field
- Interact with the industry to gain practical knowledge & promote development of students in the department

About the Department

- Established in the year 2004, the department is one of the top departments in the field.
- Research groups are formed to work with a team of experts and equipment.
- They are engaged in Medical Biotechnology
- Students are encouraged to work in the department to gain practical knowledge & research in the field.
- Special Courses / Seminars are offered, according to the needs of students.
- Strong faculty staff



B.Sc. in Medical Biotechnology

Faculty	Faculty of Applied Sciences, Department of Biotechnology
Department	Department of Biotechnology
Level	B.Sc.
Duration	3 Years
Mode	Regular
Eligibility	12th Pass (Science)
Programme	B.Sc. in Medical Biotechnology
Workload/Practical	High
Commonwealth Course	Yes
Programme	B.Sc. in Medical Biotechnology

Program Description

The B.Sc. in Medical Biotechnology programme provides students with a strong foundation in biological sciences, including molecular biology, microbiology, immunology, genetics, biochemistry, and health care management. Through practical work, students gain hands-on experience in laboratory settings, equipping them with the skills and knowledge necessary for a career in biotechnology.

Program Outcome

Graduates will be able to:

Apply their knowledge of biological sciences to solve practical problems in the field of biotechnology.

Key Features

Hands-on laboratory experience with state-of-the-art equipment and facilities.

Key Courses

- 12th Pass (Science)
- 12th Pass (Science)
- 12th Pass (Science)
- 12th Pass (Science)

Key Areas

Microbiology, Immunology, Biochemistry, Health Care Management

Key Facilities

- State-of-the-art laboratory facilities
- Well-equipped library

Key Programs

- 12th Pass (Science)
- 12th Pass (Science)
- 12th Pass (Science)
- 12th Pass (Science)
- 12th Pass (Science)



1. **Identify the main components of the system.**
 2. **Describe the function of each component.**
 3. **Explain how the components interact.**
 4. **Discuss the advantages and disadvantages of the system.**
 5. **Conclude with your own thoughts on the system.**

Component 1		Component 2		Component 3	
Function	Interaction	Function	Interaction	Function	Interaction
Input processing	Output generation	Data storage	Query execution	User interface	System monitoring
...

The system is designed to handle large volumes of data and provide a user-friendly interface. It consists of several key components that work together to ensure efficient data processing and storage.

The main components of the system are:

- Input Processing:** This component is responsible for receiving data from various sources and processing it into a format suitable for storage and analysis.
- Data Storage:** This component stores the processed data in a secure and accessible manner, allowing for easy retrieval and analysis.
- Query Execution:** This component handles user queries and returns the relevant data from the storage component.
- User Interface:** This component provides a way for users to interact with the system, allowing them to input data, view results, and manage the system.
- System Monitoring:** This component monitors the system's performance and health, alerting administrators to any issues that arise.

The advantages of this system include its ability to handle large volumes of data, its user-friendly interface, and its secure and accessible data storage. However, there are also some disadvantages, such as the potential for data loss and the need for regular maintenance.

In conclusion, this system is a powerful tool for managing and analyzing large volumes of data. It provides a user-friendly interface and efficient data processing and storage capabilities.

QUESTION 1
 The following information relates to the operations of a company for the year ended 31 December 2022:

	Revenue	Cost of sales	Administrative expenses	Finance income	Finance costs	Income tax
Revenue	1,000,000					
Cost of sales		(400,000)				
Administrative expenses			(150,000)			
Finance income				20,000		
Finance costs					(10,000)	
Income tax						(100,000)
Profit before tax						370,000
Income tax						(100,000)
Profit after tax						270,000

The company has a tax rate of 25%. The company's profit before tax is subject to a 25% tax rate. The company's profit after tax is subject to a 25% tax rate. The company's profit after tax is subject to a 25% tax rate.

QUESTION 2
 The following information relates to the operations of a company for the year ended 31 December 2022:

	Revenue	Cost of sales	Administrative expenses	Finance income	Finance costs	Income tax
Revenue	1,000,000					
Cost of sales		(400,000)				
Administrative expenses			(150,000)			
Finance income				20,000		
Finance costs					(10,000)	
Income tax						(100,000)
Profit before tax						370,000
Income tax						(100,000)
Profit after tax						270,000

The company has a tax rate of 25%. The company's profit before tax is subject to a 25% tax rate. The company's profit after tax is subject to a 25% tax rate. The company's profit after tax is subject to a 25% tax rate.

1. **Identify the main components of the system.**
 2. **Describe the function of each component.**
 3. **Explain how the components interact.**
 4. **Discuss the advantages and disadvantages of the system.**

System Components			
Component	Function	Advantages	Disadvantages
Component A
Component B
Component C
Component D
Component E

The system is designed to provide a comprehensive overview of the project's progress. It allows users to track tasks, manage resources, and generate reports. The system is user-friendly and easy to learn. It is also highly secure and reliable. The system is designed to be scalable and flexible. It can be customized to meet the needs of different organizations. The system is also highly cost-effective. It provides a high level of performance at a low cost. The system is also highly reliable. It is designed to be available 24/7. The system is also highly secure. It uses advanced security measures to protect user data. The system is also highly flexible. It can be used on a variety of devices. The system is also highly scalable. It can handle a large number of users. The system is also highly user-friendly. It has a simple and intuitive interface. The system is also highly reliable. It is designed to be available 24/7. The system is also highly secure. It uses advanced security measures to protect user data. The system is also highly flexible. It can be used on a variety of devices. The system is also highly scalable. It can handle a large number of users. The system is also highly user-friendly. It has a simple and intuitive interface.

Table 10.10: 2017 Equity Structure of BHP Billiton Limited

No.	Description	2017 (USD million)				Percentage (%)
		Number of Shares	Par Value	Market Value	Book Value	
1	Class A Ordinary Shares	11,000	11,000	11,000	11,000	11.00%
2	Class B Ordinary Shares	11,000	11,000	11,000	11,000	11.00%
3	Retained Earnings	11,000	11,000	11,000	11,000	11.00%

Notes:

- Class A and Class B ordinary shares are fully paid up and have no par value. The shares are not convertible into any other class of shares.
- The shares are not convertible into any other class of shares.
- The shares are not convertible into any other class of shares.



Interview Question

What are the different types of shares?

It is a question about the different types of shares. The answer should include the different types of shares and their characteristics.



Answer

There are two types of shares: ordinary shares and preference shares.

The answer should include the different types of shares and their characteristics.



Dr. Anshu Kulkarni

Research Scientist, IIT Bombay, India
 Head of the team that developed the first COVID-19 vaccine

"I received a message in Hindi from my former student at IIT Bombay, Dr. Anshu Kulkarni, who had just received funding for the development of a COVID-19 vaccine. I was excited to see that my former student was working on a project that was so important to the world. I immediately agreed to support her and her team."



Dr. Anshu Kulkarni

Research Scientist, IIT Bombay, India

"I received a message in Hindi from my former student at IIT Bombay, Dr. Anshu Kulkarni, who had just received funding for the development of a COVID-19 vaccine. I was excited to see that my former student was working on a project that was so important to the world. I immediately agreed to support her and her team."



Dr. Anshu Kulkarni

Research Scientist, IIT Bombay, India
 Head of the team that developed the first COVID-19 vaccine

"I received a message in Hindi from my former student at IIT Bombay, Dr. Anshu Kulkarni, who had just received funding for the development of a COVID-19 vaccine. I was excited to see that my former student was working on a project that was so important to the world. I immediately agreed to support her and her team."

Relationship

Department of Health & Biotechnology	
Relationships	Details
1. Health Technology	
Department 1.1. Health Technology	
1.1.1. Health Technology	1.1.1.1. Health Technology (Department 1.1.1.1)
1.1.2. Health Technology	1.1.2.1. Health Technology (Department 1.1.2.1)
Department 1.2. Health Technology	
1.2.1. Health Technology	1.2.1.1. Health Technology (Department 1.2.1.1)
1.2.2. Health Technology	1.2.2.1. Health Technology (Department 1.2.2.1)
2. Health Technology	
Department 2.1. Health Technology	
2.1.1. Health Technology	2.1.1.1. Health Technology
3. Health Technology (Department 3.1. Health Technology)	
Department 3.1. Health Technology	
3.1.1. Health Technology	3.1.1.1. Health Technology (Department 3.1.1.1)
3.1.2. Health Technology	3.1.2.1. Health Technology (Department 3.1.2.1)
Department 3.2. Health Technology	
3.2.1. Health Technology	3.2.1.1. Health Technology (Department 3.2.1.1)
3.2.2. Health Technology	3.2.2.1. Health Technology (Department 3.2.2.1)
4. Health Technology (Department 4.1. Health Technology)	
Department 4.1. Health Technology	
4.1.1. Health Technology	4.1.1.1. Health Technology (Department 4.1.1.1)
4.1.2. Health Technology	4.1.2.1. Health Technology (Department 4.1.2.1)
Department 4.2. Health Technology	
4.2.1. Health Technology	4.2.1.1. Health Technology (Department 4.2.1.1)
4.2.2. Health Technology	4.2.2.1. Health Technology (Department 4.2.2.1)

Notes on Relationships

- Reported for the available technology and structure from any other source (Department)
- Reported for the available technology from the available technology structure from any other source (Department)
- Reported for the available technology from the available technology structure from any other source (Department)
- Reported for the available technology from the available technology structure from any other source (Department)
- Reported for the available technology from the available technology structure from any other source (Department)

Department of Hospital Administration

Vision

To be a world-class university in training, equipping, nurturing and educating hospital administrators to meet the needs of the health care industry and serving patients in the government or non-governmental sector.

Mission

- 1. To produce graduates of quality health services administration degree or diploma holders.

About The Department

The Department of Hospital Administration was established in the year 2002 with a vision to offer a comprehensive education of health services administration. After being established, the department of hospital administration has progressed steadily in the area of educational excellence in health services administration through offering the administration degree and a diploma.

Hospital administration is an essential part of the health services industry and has greatly influenced the industry for providing better services to health services by equipping students in the area of health services administration degree and diploma holders.

The curriculum of the diploma and degree of hospital administration was developed in line with the needs and standards of the industry. The curriculum of the diploma and degree of hospital administration is designed to provide the students with the necessary knowledge and skills to meet the needs of the health services industry. The curriculum of the diploma and degree of hospital administration is designed to provide the students with the necessary knowledge and skills to meet the needs of the health services industry.



Graduate in Hospital & Administrative (BAAC)

Level 1 | 1 year diploma with research paper available

Apply now!
[Apply Now](#)

Check fees
[View Fees](#)

Enquiries
[Enquire](#)

Research 2025
[Download application form & page 2](#)

Admission Process
[View Application](#)

International Enquiries
[Contact Us](#)

Program Overview

The Bachelor of Hospital Administration programme aims to develop a workforce of highly qualified professionals in the health sector. Through extensive training, graduates contribute to a high-quality and efficient health service for patients and staff alike. The programme includes modules on health law, ethics, and research, ensuring graduates are well-prepared for the challenges of the healthcare industry.

Program Overview
[View Program Overview](#)

Admission

Check the admission process and application requirements. For more information, contact our admissions team or visit our website.

Program Overview

Students who graduate from the Bachelor of Hospital Administration will be equipped with the skills and knowledge to manage and improve healthcare services.

Course Features

Students in Hospital Administration will benefit from a curriculum that includes a mix of theory and practical experience. The programme covers a range of topics, including health law, ethics, and research, ensuring graduates are well-prepared for the challenges of the healthcare industry. The programme also includes a research paper, allowing students to explore a specific area of interest in depth. The programme is designed to be flexible, with a range of entry and exit points, and a variety of study options available. The programme is accredited by the Health Professions Council (HPC) and the Health Care Professions Council (HCPC), ensuring that graduates are recognized and respected in the industry.



Strengths of the agreement

- High quality health care
- Substantial funding of primary care services
- Hospital efficiency (waiting times) – relatively high – even in a high-income country with the technology, equipment and staff available
- Hospital closures – patient care services not available
- Patient transfers
- Funding of care services

Additional policies being debated

1. Hospital mergers

Queensland Health is merging health services. Queensland Health is merging 14 of its 120 hospitals into 10, with a view to increasing the service quality of hospitals.

2. Health care funding

Health Funding The funding provided for various purposes in the health system is the result of a combination of taxation and transfer of funds from government to the state. The funding system is a combination of state and federal government.

Health care costs (2017-18) – Queensland Health is the largest provider of health care in the state. It is a not-for-profit organisation. The state is the largest provider of health care in the state. The state is the largest provider of health care in the state. The state is the largest provider of health care in the state.

Health care costs – Queensland Health is the largest provider of health care in the state. It is a not-for-profit organisation. The state is the largest provider of health care in the state.

3. Patient experience

- Patient experience (patient care)

4. Health care workforce

Subgroups of care

Subgroup	Number of patients	Number of hospital beds
General practice	10	0
Specialist	5	1
General	5	1
Specialist	5	1
Total	25	3

Health care services are provided under a system of funding. The funding system is a combination of state and federal government. The state is the largest provider of health care in the state.

Health care funding

Health care funding is provided by the state and federal government. The state is the largest provider of health care in the state.

Healthcare – Health care is provided by the state and federal government. The state is the largest provider of health care in the state.

- Healthcare (state and federal government)

1. Healthcare (state and federal government)

- Healthcare (state and federal government)

The state is the largest provider of health care in the state. It is a not-for-profit organisation.

Healthcare – Health care is provided by the state and federal government. The state is the largest provider of health care in the state.

Healthcare – Health care is provided by the state and federal government. The state is the largest provider of health care in the state.

- Healthcare (state and federal government)

2. Healthcare (state and federal government)

- Healthcare (state and federal government)

The state is the largest provider of health care in the state. It is a not-for-profit organisation.

The state is the largest provider of health care in the state. It is a not-for-profit organisation.

Minimum Qualification

- The candidate will be given admission based on the following criteria:
- Those who are destined to study dentistry in India will study English as one of the subject in CBSE/ICSE/IB or equivalent in foreign.
- The student applicant should be holding 10+2 or a two year diploma.
- For those who have completed the secondary and secondary level education by giving 10+2 (any stream) or equivalent examination conducted off or on-site with equivalent marks. They should be required to undergo 1200000 INR to help with the study expenses once we proceed to school.
- Admission will be through the standard procedure of the school.
- Being a foreign national is not a barrier, as long as you comply with the visa process.
- For further details visit our website.

The following documents are required. These will be checked thoroughly at the school of the student.

Documents required for the admission:

- Last year of Class 10th
- Last certificate of 10th class
- Proof of English exam (The student certificate/ certificate)
- Migration certificate
- Transfer certificate
- Character certificate
- Any other relevant documents as required
- A 2x2 size photograph
- Sanitize (PHC Certificate for health certificate)
- Affidavit (if)

Documents required for the admission:

- Last year of Class 10th certificate
- Last certificate of 10th class
- Proof of English exam (The student certificate/ certificate)
- Migration certificate
- Transfer certificate
- Character certificate
- Any other relevant documents as required
- A 2x2 size photograph as required by the school
- Sanitize (PHC Certificate for health certificate)
- Affidavit (if)



1. **Identify the main components of the system.**
 2. **Describe the function of each component.**
 3. **Explain how the components interact.**
 4. **Discuss the advantages and disadvantages of the system.**
 5. **Conclude with your own thoughts on the system.**

Component		Function		Interaction		Advantages		Disadvantages	
1	Input Device	2	Processing Unit	3	Output Device	4	Storage	5	Network
1	Keyboard	2	Microprocessor	3	Monitor	4	Hard Drive	5	Internet
1	Mouse	2	RAM	3	Printer	4	SSD	5	Local Area Network
1	Scanner	2	Cache	3	Speaker	4	Optical Drive	5	Wide Area Network
1	Webcam	2	Power Supply	3	Headset	4	External Drive	5	Cloud Storage
1	Smartphone	2	Motherboard	3	Joystick	4	Backup Drive	5	Virtual Private Network
1	Tablet	2	System Unit	3	Game Controller	4	Network Drive	5	Remote Access
1	Smartwatch	2	Tower PC	3	VR Headset	4	NAS	5	VPN
1	Smart TV	2	Mini PC	3	AR Headset	4	Cloud Sync	5	Proxy Server
1	Smart Home Hub	2	Server	3	Smart Glasses	4	Remote Backup	5	Ad Blocker
1	Smart Lock	2	Cloud Server	3	Smart Contact Lens	4	Encrypted Storage	5	Content Filter
1	Smart Thermostat	2	Web Server	3	Smart Hearing Aid	4	Secure File Transfer	5	Ad Blocker
1	Smart Light Bulb	2	Database	3	Smart Prosthetic	4	Secure Email	5	Ad Blocker
1	Smart Plug	2	API	3	Smart Wheelchair	4	Secure Messaging	5	Ad Blocker
1	Smart Doorbell	2	Middleware	3	Smart Scooter	4	Secure Social Media	5	Ad Blocker
1	Smart Garage Opener	2	Frontend	3	Smart Bicycle	4	Secure Online Banking	5	Ad Blocker
1	Smart Pet Feeder	2	Backend	3	Smart Skateboard	4	Secure Online Shopping	5	Ad Blocker
1	Smart Water Filter	2	Reporting	3	Smart Golf Club	4	Secure Online News	5	Ad Blocker
1	Smart Air Purifier	2	Dashboard	3	Smart Tennis Racket	4	Secure Online Education	5	Ad Blocker
1	Smart Dehumidifier	2	Analytics	3	Smart Baseball Bat	4	Secure Online Government	5	Ad Blocker
1	Smart Humidifier	2	Alerts	3	Smart Soccer Ball	4	Secure Online Voting	5	Ad Blocker
1	Smart Air Conditioner	2	Notifications	3	Smart Football	4	Secure Online Elections	5	Ad Blocker
1	Smart Heater	2	Push Notifications	3	Smart Basketball	4	Secure Online Polls	5	Ad Blocker
1	Smart Fan	2	In-app Purchases	3	Smart Volleyball	4	Secure Online Surveys	5	Ad Blocker
1	Smart Air Fryer	2	Subscriptions	3	Smart Tennis Ball	4	Secure Online Feedback	5	Ad Blocker
1	Smart Toaster	2	Referrals	3	Smart Golf Ball	4	Secure Online Reviews	5	Ad Blocker
1	Smart Coffee Maker	2	Affiliates	3	Smart Baseball	4	Secure Online Comments	5	Ad Blocker
1	Smart Blender	2	Partnerships	3	Smart Soccer	4	Secure Online Testimonials	5	Ad Blocker
1	Smart Juicer	2	Co-branding	3	Smart Football	4	Secure Online Endorsements	5	Ad Blocker
1	Smart Food Processor	2	Joint Ventures	3	Smart Basketball	4	Secure Online Testimonials	5	Ad Blocker
1	Smart Dishwasher	2	Acquisitions	3	Smart Volleyball	4	Secure Online Testimonials	5	Ad Blocker
1	Smart Microwave	2	Partnerships	3	Smart Tennis	4	Secure Online Testimonials	5	Ad Blocker
1	Smart Range Hood	2	Co-branding	3	Smart Golf	4	Secure Online Testimonials	5	Ad Blocker
1	Smart Stove	2	Joint Ventures	3	Smart Baseball	4	Secure Online Testimonials	5	Ad Blocker
1	Smart Oven	2	Acquisitions	3	Smart Soccer	4	Secure Online Testimonials	5	Ad Blocker
1	Smart Dishwasher	2	Partnerships	3	Smart Football	4	Secure Online Testimonials	5	Ad Blocker
1	Smart Microwave	2	Co-branding	3	Smart Basketball	4	Secure Online Testimonials	5	Ad Blocker
1	Smart Range Hood	2	Joint Ventures	3	Smart Volleyball	4	Secure Online Testimonials	5	Ad Blocker
1	Smart Stove	2	Acquisitions	3	Smart Tennis	4	Secure Online Testimonials	5	Ad Blocker
1	Smart Oven	2	Partnerships	3	Smart Golf	4	Secure Online Testimonials	5	Ad Blocker
1	Smart Dishwasher	2	Co-branding	3	Smart Baseball	4	Secure Online Testimonials	5	Ad Blocker
1	Smart Microwave	2	Joint Ventures	3	Smart Soccer	4	Secure Online Testimonials	5	Ad Blocker
1	Smart Range Hood	2	Acquisitions	3	Smart Football	4	Secure Online Testimonials	5	Ad Blocker
1	Smart Stove	2	Partnerships	3	Smart Basketball	4	Secure Online Testimonials	5	Ad Blocker
1	Smart Oven	2	Co-branding	3	Smart Volleyball	4	Secure Online Testimonials	5	Ad Blocker
1	Smart Dishwasher	2	Joint Ventures	3	Smart Tennis	4	Secure Online Testimonials	5	Ad Blocker
1	Smart Microwave	2	Acquisitions	3	Smart Golf	4	Secure Online Testimonials	5	Ad Blocker
1	Smart Range Hood	2	Partnerships	3	Smart Baseball	4	Secure Online Testimonials	5	Ad Blocker
1	Smart Stove	2	Co-branding	3	Smart Soccer	4	Secure Online Testimonials	5	Ad Blocker
1	Smart Oven	2	Joint Ventures	3	Smart Football	4	Secure Online Testimonials	5	Ad Blocker
1	Smart Dishwasher	2	Acquisitions	3	Smart Basketball	4	Secure Online Testimonials	5	Ad Blocker
1	Smart Microwave	2	Partnerships	3	Smart Volleyball	4	Secure Online Testimonials	5	Ad Blocker
1	Smart Range Hood	2	Co-branding	3	Smart Tennis	4	Secure Online Testimonials	5	Ad Blocker
1	Smart Stove	2	Joint Ventures	3	Smart Golf	4	Secure Online Testimonials	5	Ad Blocker
1	Smart Oven	2	Acquisitions	3	Smart Baseball	4	Secure Online Testimonials	5	Ad Blocker
1	Smart Dishwasher	2	Partnerships	3	Smart Soccer	4	Secure Online Testimonials	5	Ad Blocker
1	Smart Microwave	2	Co-branding	3	Smart Football	4	Secure Online Testimonials	5	Ad Blocker
1	Smart Range Hood	2	Joint Ventures	3	Smart Basketball	4	Secure Online Testimonials	5	Ad Blocker
1	Smart Stove	2	Acquisitions	3	Smart Volleyball	4	Secure Online Testimonials	5	Ad Blocker
1	Smart Oven	2	Partnerships	3	Smart Tennis	4	Secure Online Testimonials	5	Ad Blocker
1	Smart Dishwasher	2	Co-branding	3	Smart Golf	4	Secure Online Testimonials	5	Ad Blocker
1	Smart Microwave	2	Joint Ventures	3	Smart Baseball	4	Secure Online Testimonials	5	Ad Blocker
1	Smart Range Hood	2	Acquisitions	3	Smart Soccer	4	Secure Online Testimonials	5	Ad Blocker
1	Smart Stove	2	Partnerships	3	Smart Football	4	Secure Online Testimonials	5	Ad Blocker
1	Smart Oven	2	Co-branding	3	Smart Basketball	4	Secure Online Testimonials	5	Ad Blocker
1	Smart Dishwasher	2	Joint Ventures	3	Smart Volleyball	4	Secure Online Testimonials	5	Ad Blocker
1	Smart Microwave	2	Acquisitions	3	Smart Tennis	4	Secure Online Testimonials	5	Ad Blocker
1	Smart Range Hood	2	Partnerships	3	Smart Golf	4	Secure Online Testimonials	5	Ad Blocker
1	Smart Stove	2	Co-branding	3	Smart Baseball	4	Secure Online Testimonials	5	Ad Blocker
1	Smart Oven	2	Joint Ventures	3	Smart Soccer	4	Secure Online Testimonials	5	Ad Blocker
1	Smart Dishwasher	2	Acquisitions	3	Smart Football	4	Secure Online Testimonials	5	Ad Blocker
1	Smart Microwave	2	Partnerships	3	Smart Basketball	4	Secure Online Testimonials	5	Ad Blocker
1	Smart Range Hood	2	Co-branding	3	Smart Volleyball	4	Secure Online Testimonials	5	Ad Blocker
1	Smart Stove	2	Joint Ventures	3	Smart Tennis	4	Secure Online Testimonials	5	Ad Blocker
1	Smart Oven	2	Acquisitions	3	Smart Golf	4	Secure Online Testimonials	5	Ad Blocker
1	Smart Dishwasher	2	Partnerships	3	Smart Baseball	4	Secure Online Testimonials	5	Ad Blocker
1	Smart Microwave	2	Co-branding	3	Smart Soccer	4	Secure Online Testimonials	5	Ad Blocker
1	Smart Range Hood	2	Joint Ventures	3	Smart Football	4	Secure Online Testimonials	5	Ad Blocker
1	Smart Stove	2	Acquisitions	3	Smart Basketball	4	Secure Online Testimonials	5	Ad Blocker
1	Smart Oven	2	Partnerships	3	Smart Volleyball	4	Secure Online Testimonials	5	Ad Blocker
1	Smart Dishwasher	2	Co-branding	3	Smart Tennis	4	Secure Online Testimonials	5	Ad Blocker
1	Smart Microwave	2	Joint Ventures	3	Smart Golf	4	Secure Online Testimonials	5	Ad Blocker
1	Smart Range Hood	2	Acquisitions	3	Smart Baseball	4	Secure Online Testimonials	5	Ad Blocker
1	Smart Stove	2	Partnerships	3	Smart Soccer	4	Secure Online Testimonials	5	Ad Blocker
1	Smart Oven	2	Co-branding	3	Smart Football	4	Secure Online Testimonials	5	Ad Blocker
1	Smart Dishwasher	2	Joint Ventures	3	Smart Basketball	4	Secure Online Testimonials	5	Ad Blocker
1	Smart Microwave	2	Acquisitions	3	Smart Volleyball	4	Secure Online Testimonials	5	Ad Blocker
1	Smart Range Hood	2	Partnerships	3	Smart Tennis	4	Secure Online Testimonials	5	Ad Blocker
1	Smart Stove	2	Co-branding	3	Smart Golf	4	Secure Online Testimonials	5	Ad Blocker
1	Smart Oven	2	Joint Ventures	3	Smart Baseball	4	Secure Online Testimonials	5	Ad Blocker
1	Smart Dishwasher	2	Acquisitions	3	Smart Soccer	4	Secure Online Testimonials	5	Ad Blocker
1	Smart Microwave	2	Partnerships	3	Smart Football	4	Secure Online Testimonials	5	Ad Blocker
1	Smart Range Hood	2	Co-branding	3	Smart Basketball	4	Secure Online Testimonials	5	Ad Blocker
1	Smart Stove	2	Joint Ventures	3	Smart Volleyball	4	Secure Online Testimonials	5	Ad Blocker
1	Smart Oven	2	Acquisitions	3	Smart Tennis	4	Secure Online Testimonials	5	Ad Blocker
1	Smart Dishwasher	2	Partnerships	3	Smart Golf	4	Secure Online Testimonials	5	Ad Blocker
1	Smart Microwave	2	Co-branding	3	Smart Baseball	4	Secure Online Testimonials	5	Ad Blocker
1	Smart Range Hood	2	Joint Ventures	3	Smart Soccer	4	Secure Online Testimonials	5	Ad Blocker
1	Smart Stove	2	Acquisitions	3	Smart Football	4	Secure Online Testimonials	5	Ad Blocker
1	Smart Oven	2	Partnerships	3	Smart Basketball	4	Secure Online Testimonials	5	Ad Blocker
1	Smart Dishwasher	2	Co-branding	3	Smart Volleyball	4	Secure Online Testimonials	5	Ad Blocker
1	Smart Microwave	2	Joint Ventures	3	Smart Tennis	4	Secure Online Testimonials	5	Ad Blocker
1	Smart Range Hood	2	Acquisitions	3	Smart Golf	4	Secure Online Testimonials	5	Ad Blocker
1	Smart Stove	2	Partnerships	3	Smart Baseball	4	Secure Online Testimonials	5	Ad Blocker
1	Smart Oven	2	Co-branding	3	Smart Soccer	4	Secure Online Testimonials	5	Ad Blocker
1	Smart Dishwasher	2	Joint Ventures	3	Smart Football	4	Secure Online Testimonials	5	Ad Blocker
1	Smart Microwave	2	Acquisitions	3	Smart Basketball	4	Secure Online Testimonials	5	Ad Blocker
1	Smart Range Hood	2	Partnerships	3	Smart Volleyball	4	Secure Online Testimonials	5	Ad Blocker
1	Smart Stove	2	Co-branding	3	Smart Tennis	4	Secure Online Testimonials	5	Ad Blocker
1	Smart Oven	2	Joint Ventures	3	Smart Golf	4	Secure Online Testimonials	5	Ad Blocker
1	Smart Dishwasher	2	Acquisitions	3	Smart Baseball	4	Secure Online Testimonials	5	Ad Blocker
1	Smart Microwave	2	Partnerships	3	Smart Soccer	4	Secure Online Testimonials	5	Ad Blocker
1	Smart Range Hood	2	Co-branding	3	Smart Football	4	Secure Online Testimonials	5	Ad Blocker
1	Smart Stove	2	Joint Ventures	3	Smart Basketball	4	Secure Online Testimonials	5	Ad Blocker
1	Smart Oven	2	Acquisitions	3	Smart Volleyball	4	Secure Online Testimonials	5	Ad Blocker
1	Smart Dishwasher	2	Partnerships	3	Smart Tennis	4	Secure Online Testimonials	5	Ad Blocker
1	Smart Microwave	2	Co-branding	3	Smart Golf	4	Secure Online Testimonials	5	Ad Blocker
1	Smart Range Hood	2	Joint Ventures	3	Smart Baseball	4	Secure Online Testimonials	5	Ad Blocker
1	Smart Stove	2	Acquisitions	3	Smart Soccer	4	Secure Online Testimonials	5	Ad Blocker
1	Smart Oven	2	Partnerships	3	Smart Football	4	Secure Online Testimonials	5	Ad Blocker
1	Smart Dishwasher	2	Co-branding	3	Smart Basketball	4	Secure Online Testimonials	5	Ad Blocker
1	Smart Microwave	2	Joint Ventures	3	Smart Volleyball	4	Secure Online Testimonials	5	Ad Blocker
1	Smart Range Hood	2	Acquisitions	3	Smart Tennis	4	Secure Online Testimonials	5	Ad Blocker
1	Smart Stove	2	Partnerships	3	Smart Golf	4	Secure Online Testimonials	5	Ad Blocker
1	Smart Oven	2	Co-branding	3	Smart Baseball	4	Secure Online Testimonials	5	Ad Blocker
1	Smart Dishwasher	2	Joint Ventures	3	Smart Soccer	4	Secure Online Testimonials	5	Ad Blocker
1	Smart Microwave	2	Acquisitions	3	Smart Football	4	Secure Online Testimonials	5	Ad Blocker
1	Smart Range Hood	2	Partnerships	3	Smart Basketball	4	Secure Online Testimonials	5	Ad Blocker
1	Smart Stove	2	Co-branding	3	Smart Volleyball	4	Secure Online Testimonials	5	Ad Blocker
1	Smart Oven	2	Joint Ventures	3	Smart Tennis	4	Secure Online Testimonials	5	Ad Blocker
1	Smart Dishwasher	2	Acquisitions	3	Smart Golf	4	Secure Online Testimonials	5	Ad Blocker
1	Smart Microwave	2	Partnerships	3	Smart Baseball	4	Secure Online Testimonials	5	Ad Blocker
1	Smart Range Hood	2	Co-branding	3	Smart Soccer	4	Secure Online Testimonials	5	Ad Blocker
1	Smart Stove	2	Joint Ventures	3	Smart Football	4	Secure Online Testimonials	5	Ad Blocker
1	Smart Oven	2	Acquisitions	3	Smart Basketball	4	Secure Online Testimonials	5	Ad Blocker
1	Smart Dishwasher	2	Partnerships	3	Smart Volleyball	4	Secure Online Testimonials	5	Ad Blocker
1	Smart Microwave	2	Co-branding	3	Smart Tennis	4	Secure Online Testimonials	5	Ad Blocker
1	Smart Range Hood	2	Joint Ventures	3	Smart Golf	4	Secure Online Testimonials	5	Ad Blocker
1	Smart Stove	2	Acquisitions	3	Smart Baseball	4	Secure Online Testimonials	5	Ad Blocker
1	Smart Oven	2	Partnerships	3	Smart Soccer	4	Secure Online Testimonials	5	Ad Blocker
1	Smart Dishwasher	2	Co-branding	3	Smart Football	4	Secure Online Testimonials	5	Ad Blocker

QUESTION

1. The following table shows the results of a survey of 100 people about their favourite sport.

Sport	Number of people
Football	45
Cricket	30
Rugby	15
Netball	10

ANSWER

(a) The probability that a person's favourite sport is football is $\frac{45}{100} = 0.45$.

(b) The probability that a person's favourite sport is not football is $1 - 0.45 = 0.55$.

(c) The probability that a person's favourite sport is either football or cricket is $\frac{45}{100} + \frac{30}{100} = 0.75$.

(d) The probability that a person's favourite sport is either football or netball is $\frac{45}{100} + \frac{10}{100} = 0.55$.

(e) The probability that a person's favourite sport is either football or rugby is $\frac{45}{100} + \frac{15}{100} = 0.60$.

QUESTION

2. A bag contains 10 balls, 3 of which are red and 7 are blue. A ball is chosen at random from the bag.

(a) What is the probability that the ball chosen is red?

(b) What is the probability that the ball chosen is blue?

(c) What is the probability that the ball chosen is either red or blue?

(d) What is the probability that the ball chosen is not red?

(e) What is the probability that the ball chosen is not blue?

ANSWER

(a) $\frac{3}{10}$

(b) $\frac{7}{10}$

(c) 1

(d) $\frac{7}{10}$

(e) $\frac{3}{10}$

Table 10.10.10.1 | 2019 Financials of QST Management

Line	Description	2019 Financials of QST Management				2018 Financials of QST Management
		Revenue	Expenses			
		2019	2019	2019	2019	2018
1	Operating Revenue	1000	2000	3000	4000	5000
2	Operating Expenses	500	1000	1500	2000	2500
3	Operating Profit	500	1000	1500	2000	2500

Notes:
 1. Operating revenue includes the revenue from the sale of goods and services, as well as the revenue from the sale of real estate.
 2. Operating expenses include the cost of goods sold, depreciation, and other operating expenses.
 3. Operating profit is the difference between operating revenue and operating expenses.

Literature

Department of English Literature	
Category	Details
A. Main Research	
Approach to research methodology	
Qualitative research	2000-2010
Quantitative research	2010-2020
Approach to research in specific sub-fields	
Classical literature	2000-2010
Modernist literature	2010-2020
B. Recent Research	
Approach to research in specific sub-fields	
Classical literature	2010-2020
C. New & Emerging QST Research	
Approach to research in specific sub-fields	
Classical literature	2010-2020
Modernist literature	2010-2020
D. Specific Research: Research on the history of the English language	
Category 1: Historical	
Classical literature	2000-2010
Category 2: Modernist	
Classical literature	2010-2020
Category 3: Contemporary	
Classical literature	2010-2020

Footnote:
 1. This research is based on the data provided in the table above.
 2. The data is subject to change as new research is published.
 3. The data is for informational purposes only and should not be used for financial or legal advice.
 4. The data is for informational purposes only and should not be used for financial or legal advice.





Dr. Jyoti Kumar

MD, DNB

Senior Lecturer, Pathology

Postgraduate Institute of Medical Sciences

During the course of a career, she has been a part of administrative and academic activities. She has been a member of various committees and has been actively involved in various committees. She has been a part of various committees and has been actively involved in various committees.



Dr. Anjali Singh

MD, DNB

Department of Health Administration

Postgraduate Institute of Medical Sciences

She has been a part of various committees and has been actively involved in various committees. She has been a part of various committees and has been actively involved in various committees.



Dr. Jyoti Kumar

MD, DNB

Senior Lecturer, Pathology

Postgraduate Institute of Medical Sciences

During the course of a career, she has been a part of administrative and academic activities. She has been a member of various committees and has been actively involved in various committees.

Doctor of Philosophy (Ph.D.)

Requirements

- Successful completion of an M.S. program
- Successful completion of Graduate Research Assistantship or equivalent position in research and/or teaching
- Eight dissertation publications in the field of the discipline or a portfolio of research and/or teaching work

Required Courses

- Graduate research assistantship or equivalent salary and benefits
- Dissertation (or dissertation outline) (see dissertation) thesis
- Research and teaching (see dissertation) thesis, a dissertation research and/or teaching portfolio
- A major research and/or teaching portfolio submitted with the dissertation proposal

Course Work

See page 60-61

Additional

- Successful completion of all other University and program requirements

Successful completion of all other University and program requirements is necessary for the Ph.D. degree. The Ph.D. degree is awarded to students who have completed all requirements for the degree and who have submitted a dissertation proposal that has been approved by the dissertation committee.

The dissertation proposal is normally written by the student and is approved by the dissertation committee. The dissertation proposal is normally written by the student and is approved by the dissertation committee.

Additional Information

- Dissertation committee: The dissertation committee is composed of three faculty members who are experts in the student's field of study.
- Dissertation proposal: The dissertation proposal is a written document that outlines the student's research project and is approved by the dissertation committee.
- Dissertation defense: The dissertation defense is a public presentation of the student's research project to the dissertation committee and other faculty members.
- Dissertation committee: The dissertation committee is composed of three faculty members who are experts in the student's field of study.

Dissertation Committee

The dissertation committee is composed of three faculty members who are experts in the student's field of study.

The dissertation committee is composed of three faculty members who are experts in the student's field of study.

Dissertation Proposal

The dissertation proposal is a written document that outlines the student's research project and is approved by the dissertation committee.

Dissertation Defense

The dissertation defense is a public presentation of the student's research project to the dissertation committee and other faculty members.

Successful completion of all other University and program requirements is necessary for the Ph.D. degree. The Ph.D. degree is awarded to students who have completed all requirements for the degree and who have submitted a dissertation proposal that has been approved by the dissertation committee.

Program Description

The Ph.D. program in Education (Ph.D. Ed.) is a terminal degree program designed to prepare students for careers in research and/or teaching. The program is designed to provide students with the knowledge and skills necessary to conduct research and to teach in a variety of educational settings. The program includes coursework in research methods, statistics, and teaching methods. Students are required to complete a dissertation project and to defend it before a dissertation committee. The program is designed to provide students with the knowledge and skills necessary to conduct research and to teach in a variety of educational settings.

Program Objectives

- Students will be able to design, conduct, and report on research in the field of education.
- Students will be able to apply research findings to practice in the field of education.
- Students will be able to communicate research findings to a variety of audiences.
- Students will be able to evaluate research and to make informed decisions about educational practice.
- Students will be able to work effectively in a variety of educational settings.
- Students will be able to contribute to the field of education through research and teaching.

Additional Information

Successful completion of all other University and program requirements is necessary for the Ph.D. degree. The Ph.D. degree is awarded to students who have completed all requirements for the degree and who have submitted a dissertation proposal that has been approved by the dissertation committee.

The dissertation proposal is normally written by the student and is approved by the dissertation committee. The dissertation proposal is normally written by the student and is approved by the dissertation committee.

Additional Information

Successful completion of all other University and program requirements is necessary for the Ph.D. degree. The Ph.D. degree is awarded to students who have completed all requirements for the degree and who have submitted a dissertation proposal that has been approved by the dissertation committee.

The dissertation proposal is normally written by the student and is approved by the dissertation committee. The dissertation proposal is normally written by the student and is approved by the dissertation committee.

The dissertation proposal is normally written by the student and is approved by the dissertation committee. The dissertation proposal is normally written by the student and is approved by the dissertation committee.

The dissertation proposal is normally written by the student and is approved by the dissertation committee. The dissertation proposal is normally written by the student and is approved by the dissertation committee.

Take

The effectiveness of the data is determined by how well reports are collected, compared, analyzed, and used to address challenges. The reports are always used to identify major planning problems in the area and to set strategic targets based on the comparison of present conditions to the historical data. The data are used to identify and measure trends, giving the data being reported a significant role in the process. The data are also used to identify trends in the system and to identify trends in the system. The data are used to identify trends in the system and to identify trends in the system. The data are used to identify trends in the system and to identify trends in the system.

Key Considerations

Reports are often used to identify trends in the system and to identify trends in the system. The data are used to identify trends in the system and to identify trends in the system. The data are used to identify trends in the system and to identify trends in the system.

Notes

1. The data are used to identify trends in the system and to identify trends in the system. The data are used to identify trends in the system and to identify trends in the system.

2. The data are used to identify trends in the system and to identify trends in the system. The data are used to identify trends in the system and to identify trends in the system.

Key Considerations

- 1. The data are used to identify trends in the system and to identify trends in the system.
- 2. The data are used to identify trends in the system and to identify trends in the system.
- 3. The data are used to identify trends in the system and to identify trends in the system.
- 4. The data are used to identify trends in the system and to identify trends in the system.

Comparative Analysis of Data			
Year	Value	Change from Previous Year	Percentage Change
2010	100	-	-
2011	110	10	10%
2012	120	10	9%
2013	130	10	8%
2014	140	10	7%
2015	150	10	7%
2016	160	10	7%
2017	170	10	6%
2018	180	10	6%
2019	190	10	6%
2020	200	10	5%



SECTION 7

General information

Online application

[General online application](#)

For admission to B Tech, MCA, M.A. MA, MCA, M.Tech, M. Sc courses, candidates can apply online through [www.apptest.in](#)

[www.apptest.in/en/online](#)

For admission to M.Sc. M.Tech, UGC, Nursing, MCA, Nursing, B.Tech, M.Tech, Medical Biotechnology, M.Tech Medical Biotechnology, UGC, All India Health Professions M.Phil, BA, B.Com, MA, M.Fin

[Candidates can apply through www.apptest.in](#)

Instructions for filling online application form

1. **Course & Branch** - Candidates should select the course and branch.
2. **Mode of Fee Payment** - Candidates should select the mode of fee payment. Candidates should select the mode of fee payment. Candidates should select the mode of fee payment.
3. **Category** - Candidates should select the category.
4. **Sex** - Candidates should select the sex.
5. **DOB** - Candidates should select the date of birth.
6. **LTG of 9th** - Candidates should select the type of locality.
7. **HTG of 10th** - Candidates should select the type of locality.
8. **HTG of 12th** - Candidates should select the type of locality.
9. **CGPA** - Candidates should select the CGPA.
10. **CGPA** - Candidates should select the CGPA.
11. **CGPA** - Candidates should select the CGPA.
12. **CGPA** - Candidates should select the CGPA.
13. **CGPA** - Candidates should select the CGPA.
14. **CGPA** - Candidates should select the CGPA.
15. **CGPA** - Candidates should select the CGPA.
16. **CGPA** - Candidates should select the CGPA.
17. **CGPA** - Candidates should select the CGPA.
18. **CGPA** - Candidates should select the CGPA.
19. **CGPA** - Candidates should select the CGPA.
20. **CGPA** - Candidates should select the CGPA.
21. **CGPA** - Candidates should select the CGPA.
22. **CGPA** - Candidates should select the CGPA.
23. **CGPA** - Candidates should select the CGPA.
24. **CGPA** - Candidates should select the CGPA.
25. **CGPA** - Candidates should select the CGPA.
26. **CGPA** - Candidates should select the CGPA.
27. **CGPA** - Candidates should select the CGPA.
28. **CGPA** - Candidates should select the CGPA.
29. **CGPA** - Candidates should select the CGPA.
30. **CGPA** - Candidates should select the CGPA.
31. **CGPA** - Candidates should select the CGPA.
32. **CGPA** - Candidates should select the CGPA.
33. **CGPA** - Candidates should select the CGPA.
34. **CGPA** - Candidates should select the CGPA.
35. **CGPA** - Candidates should select the CGPA.
36. **CGPA** - Candidates should select the CGPA.
37. **CGPA** - Candidates should select the CGPA.
38. **CGPA** - Candidates should select the CGPA.
39. **CGPA** - Candidates should select the CGPA.
40. **CGPA** - Candidates should select the CGPA.
41. **CGPA** - Candidates should select the CGPA.
42. **CGPA** - Candidates should select the CGPA.
43. **CGPA** - Candidates should select the CGPA.
44. **CGPA** - Candidates should select the CGPA.
45. **CGPA** - Candidates should select the CGPA.
46. **CGPA** - Candidates should select the CGPA.
47. **CGPA** - Candidates should select the CGPA.
48. **CGPA** - Candidates should select the CGPA.
49. **CGPA** - Candidates should select the CGPA.
50. **CGPA** - Candidates should select the CGPA.
51. **CGPA** - Candidates should select the CGPA.
52. **CGPA** - Candidates should select the CGPA.
53. **CGPA** - Candidates should select the CGPA.
54. **CGPA** - Candidates should select the CGPA.
55. **CGPA** - Candidates should select the CGPA.
56. **CGPA** - Candidates should select the CGPA.
57. **CGPA** - Candidates should select the CGPA.
58. **CGPA** - Candidates should select the CGPA.
59. **CGPA** - Candidates should select the CGPA.
60. **CGPA** - Candidates should select the CGPA.
61. **CGPA** - Candidates should select the CGPA.
62. **CGPA** - Candidates should select the CGPA.
63. **CGPA** - Candidates should select the CGPA.
64. **CGPA** - Candidates should select the CGPA.
65. **CGPA** - Candidates should select the CGPA.
66. **CGPA** - Candidates should select the CGPA.
67. **CGPA** - Candidates should select the CGPA.
68. **CGPA** - Candidates should select the CGPA.
69. **CGPA** - Candidates should select the CGPA.
70. **CGPA** - Candidates should select the CGPA.
71. **CGPA** - Candidates should select the CGPA.
72. **CGPA** - Candidates should select the CGPA.
73. **CGPA** - Candidates should select the CGPA.
74. **CGPA** - Candidates should select the CGPA.
75. **CGPA** - Candidates should select the CGPA.
76. **CGPA** - Candidates should select the CGPA.
77. **CGPA** - Candidates should select the CGPA.
78. **CGPA** - Candidates should select the CGPA.
79. **CGPA** - Candidates should select the CGPA.
80. **CGPA** - Candidates should select the CGPA.
81. **CGPA** - Candidates should select the CGPA.
82. **CGPA** - Candidates should select the CGPA.
83. **CGPA** - Candidates should select the CGPA.
84. **CGPA** - Candidates should select the CGPA.
85. **CGPA** - Candidates should select the CGPA.
86. **CGPA** - Candidates should select the CGPA.
87. **CGPA** - Candidates should select the CGPA.
88. **CGPA** - Candidates should select the CGPA.
89. **CGPA** - Candidates should select the CGPA.
90. **CGPA** - Candidates should select the CGPA.
91. **CGPA** - Candidates should select the CGPA.
92. **CGPA** - Candidates should select the CGPA.
93. **CGPA** - Candidates should select the CGPA.
94. **CGPA** - Candidates should select the CGPA.
95. **CGPA** - Candidates should select the CGPA.
96. **CGPA** - Candidates should select the CGPA.
97. **CGPA** - Candidates should select the CGPA.
98. **CGPA** - Candidates should select the CGPA.
99. **CGPA** - Candidates should select the CGPA.
100. **CGPA** - Candidates should select the CGPA.

General information
[www.apptest.in/en/online](#)
 www.apptest.in/en/online
 www.apptest.in/en/online
 www.apptest.in/en/online
 www.apptest.in/en/online

[www.apptest.in/en/online](#)

General information
[www.apptest.in/en/online](#)
 www.apptest.in/en/online
 www.apptest.in/en/online
 www.apptest.in/en/online

General information
[www.apptest.in/en/online](#)
 www.apptest.in/en/online
 www.apptest.in/en/online
 www.apptest.in/en/online
 www.apptest.in/en/online

[www.apptest.in/en/online](#)

General information
[www.apptest.in/en/online](#)
 www.apptest.in/en/online
 www.apptest.in/en/online

[www.apptest.in/en/online](#)

General information
[www.apptest.in/en/online](#)
 www.apptest.in/en/online
 www.apptest.in/en/online
 www.apptest.in/en/online
 www.apptest.in/en/online

[www.apptest.in/en/online](#)

General information
[www.apptest.in/en/online](#)
 www.apptest.in/en/online
 www.apptest.in/en/online
 www.apptest.in/en/online
 www.apptest.in/en/online

Bulletin (M & Tech Candidates - EMT (Sixth Month) Entrance Test)

Examination Details

Download the syllabus of the examination at www.mca.gov.in

Examination Mode

Candidates are required to appear in full examination and to receive their admit card after the examination. The admit card will be generated after the exam through portal.

Download the syllabus and sample TGT from www.mca.gov.in under the heading 'TGT from Tenth Standard Mathematics & English'. There is a separate entry.

The syllabus is available at www.mca.gov.in under the heading 'Syllabus'.

Exam Registration

Registration is open for all candidates who are eligible to appear.

It is the responsibility of the candidate to ensure that all the details are correct.

The candidate should ensure that the details are correct and complete. The candidate should ensure that the details are correct and complete. The candidate should ensure that the details are correct and complete.

The result for the date of counselling will be published on the website.

Details of Training Faculty & Office

The details of training faculty and office are as follows: www.mca.gov.in

The details of training faculty and office are as follows: www.mca.gov.in

The details of training faculty and office are as follows: www.mca.gov.in

The details of training faculty and office are as follows: www.mca.gov.in

The details of training faculty and office are as follows: www.mca.gov.in

The details of training faculty and office are as follows: www.mca.gov.in

The details of training faculty and office are as follows: www.mca.gov.in

The details of training faculty and office are as follows: www.mca.gov.in

The details of training faculty and office are as follows: www.mca.gov.in

The details of training faculty and office are as follows: www.mca.gov.in

4. Career & Training Information

Download the syllabus of the examination at www.mca.gov.in

Download the syllabus of the examination at www.mca.gov.in

Download the syllabus of the examination at www.mca.gov.in

Download the syllabus of the examination at www.mca.gov.in

Download the syllabus of the examination at www.mca.gov.in

Download the syllabus of the examination at www.mca.gov.in

Download the syllabus of the examination at www.mca.gov.in

Download the syllabus of the examination at www.mca.gov.in

Download the syllabus of the examination at www.mca.gov.in

Download the syllabus of the examination at www.mca.gov.in

Download the syllabus of the examination at www.mca.gov.in

Download the syllabus of the examination at www.mca.gov.in

Download the syllabus of the examination at www.mca.gov.in

Download the syllabus of the examination at www.mca.gov.in

Download the syllabus of the examination at www.mca.gov.in

Download the syllabus of the examination at www.mca.gov.in

Download the syllabus of the examination at www.mca.gov.in

Download the syllabus of the examination at www.mca.gov.in

Download the syllabus of the examination at www.mca.gov.in

Download the syllabus of the examination at www.mca.gov.in

Download the syllabus of the examination at www.mca.gov.in

Download the syllabus of the examination at www.mca.gov.in

Accounting Review

The accountants review completed subject matter and financial statements (supplementary information) prepared for and by business corporations in the second year.

Summary of IAC requirements relating to the review of the preparation of financial statements, which is contained in the IAC's Handbook of Accounting Principles, is given below.

Objective

The objective of the review is to give assurance over the accuracy of the data in financial statements and to identify the areas of the problem, if any, which cause concern to the accountants. The accountants are, however, required to state in their report whether they are satisfied by the preparation of the statements.

Understandability and clarity of form

The language of the Student Accounts Committee accountants should be clear and easy to understand.

The accountants should be satisfied that the data and financial statements are clear and understandable. It is the accountants' duty to ensure that the data and financial statements are clear and understandable.

Accounting principles to be used

Students must use IAC approved and valid accounts forms and financial statements forms (IAC approved forms) and IAC approved accounting principles. The IAC approved forms and IAC approved accounting principles are given below.

[IAC Approved Accounting Principles](#)

[IAC Approved Forms](#)

IMA Withdrawal & Refund Policy

Students wishing to withdraw from the program should contact the IMA office for more information.

The IMA office will provide information on the withdrawal process to all students who wish to withdraw.

Students who wish to withdraw from the program should contact the IMA office for more information. The IMA office will provide information on the withdrawal process to all students who wish to withdraw.

Year	Withdrawal Fee	Refund Policy
1	10%	Students who withdraw from the program in the first year will receive a 10% refund of the tuition fee.
2	20%	Students who withdraw from the program in the second year will receive a 20% refund of the tuition fee.
3	30%	Students who withdraw from the program in the third year will receive a 30% refund of the tuition fee.
4	40%	Students who withdraw from the program in the fourth year will receive a 40% refund of the tuition fee.
5	50%	Students who withdraw from the program in the fifth year will receive a 50% refund of the tuition fee.

*Withdrawal fee is non-refundable.

IMA will provide a refund of the tuition fee for students who withdraw from the program in the first year. The refund will be calculated as a percentage of the total tuition fee. The refund will be calculated as a percentage of the total tuition fee. The refund will be calculated as a percentage of the total tuition fee.

Notes

- IMA will provide a refund of the tuition fee for students who withdraw from the program in the first year.
 - IMA will provide a refund of the tuition fee for students who withdraw from the program in the second year.
 - IMA will provide a refund of the tuition fee for students who withdraw from the program in the third year.
 - IMA will provide a refund of the tuition fee for students who withdraw from the program in the fourth year.
 - IMA will provide a refund of the tuition fee for students who withdraw from the program in the fifth year.
- The IMA office will provide a refund of the tuition fee for students who withdraw from the program in the first year. The refund will be calculated as a percentage of the total tuition fee. The refund will be calculated as a percentage of the total tuition fee. The refund will be calculated as a percentage of the total tuition fee.

[IMA Withdrawal & Refund Policy](#)

IMA will provide a refund of the tuition fee for students who withdraw from the program in the first year.

IMA Withdrawal & Refund Policy

IMA will provide a refund of the tuition fee for students who withdraw from the program in the first year.

Year	Withdrawal Fee	Refund Policy
1	10%	Students who withdraw from the program in the first year will receive a 10% refund of the tuition fee.
2	20%	Students who withdraw from the program in the second year will receive a 20% refund of the tuition fee.
3	30%	Students who withdraw from the program in the third year will receive a 30% refund of the tuition fee.
4	40%	Students who withdraw from the program in the fourth year will receive a 40% refund of the tuition fee.
5	50%	Students who withdraw from the program in the fifth year will receive a 50% refund of the tuition fee.

*Withdrawal fee is non-refundable.

IMA will provide a refund of the tuition fee for students who withdraw from the program in the first year.

Address details for Physical Reporting
(Phone Number)

Right to Buy

Section 166 (1)(a) (2014)
 Right to Buy (Leasehold) Regulations (Provision on
 Right to Buy (Leasehold) (General) Regulations)

Section 166 (2)(2014)
 Right to Buy (Leasehold) (General) Regulations

Right to Buy

Section 166 (1)(a) (2014)
 Right to Buy (Leasehold) Regulations (Provision on
 Right to Buy (Leasehold) (General) Regulations)

Section 166 (2)(2014)
 Right to Buy (Leasehold) Regulations

HMJ Hostel Fee Referral Policy - 2020

Section	Section
1. Purpose of the Policy	1.1 To provide a clear and concise policy for the referral of hostel fees to the HMJ.
2. Scope of the Policy	2.1 This policy applies to all staff and contractors who are involved in the referral of hostel fees to the HMJ.
3. Definitions	3.1 Hostel Fee: A fee charged by the HMJ for the use of a hostel room.
4. Referral Process	4.1 Staff and contractors must complete a referral form and submit it to the HMJ.
5. Review and Approval	5.1 All referrals must be reviewed and approved by the HMJ before the fee is paid.
6. Reporting	6.1 Staff and contractors must report any issues or concerns related to the referral process to the HMJ.

- To provide a clear and concise policy for the referral of hostel fees to the HMJ.
- To ensure that all staff and contractors who are involved in the referral process are aware of the policy and their responsibilities.
- To ensure that all referrals are reviewed and approved by the HMJ before the fee is paid.
- To ensure that all issues or concerns related to the referral process are reported to the HMJ.
- To ensure that the policy is reviewed and updated as needed.
- To ensure that the policy is communicated to all staff and contractors.

Annex II

Application Form

I, _____ Student/Manager/Institution at _____ living/NTET
 staff/State _____ son / daughter of _____ being written to stand for admission
 for the admission to _____ years B.E. in Bachelors Medical Science of Medical Science Graduate
 course conducted _____ son/daughter of _____ whose photograph is of
 hand taken and will sign as above later in response to a later summons.

The authorized representatives will bring all the necessary documents, pay the appropriate fees and complete
 all the necessary formalities as prescribed.

Reason for Absence:

A recent
 passport size
 photograph of
 the candidate
 should be af-
 fixed here.

A recent
 passport size
 photograph of
 the candidate
 should be af-
 fixed here.

Signature of Candidate
 Date:

Signature of Representative
 Date:

How to reach SMIT & SMU



Newest Airport



Flight



Bojoring (Garuda Wisata)

Newest Railway Station



New railway station
(KRL)

Water Campus

Address - 72028 588101, Indai

E-mail: admission@smiitgsmu.edu.in

Phone: +91-9877714444/25740

smiitgsmu.edu.in

Telangana Campus

9th Mile, Lohang, Ongole - 517022, Andhra Pradesh

Phone: +91-2582-270009

Mobile No: +91-9886588888 / 2582-270009

E-mail: admission@smiitgsmu.edu.in

smiitgsmu.edu.in

For

SMIT/SMU Courses

Phone: +91-9886588888 / 2582-270009

E-mail: admission@smiitgsmu.edu.in

Working Classes

Phone: +91-7800958830

E-mail: admission@smiitgsmu.edu.in / admission@smiitgsmu.edu.in

Health & Nutritionology Courses

Phone: +91-420770434

E-mail: admission@smiitgsmu.edu.in

Allied Health Professions Courses

Phone: +91-8881818180

E-mail: admission@smiitgsmu.edu.in

Department of Applied Administrative Courses

Phone: +91-8775488870

E-mail: admission@smiitgsmu.edu.in

Phyiotherapy Courses

Phone: +91-9100798788 / 9802370704

E-mail: admission@smiitgsmu.edu.in / admission@smiitgsmu.edu.in

Executive level diploma in health care courses

Phone: +91-2548223370

E-mail: admission@smiitgsmu.edu.in